



مركز الإحصاء - أبوظبي
STATISTICS CENTRE - ABU DHABI

Social Indicators Series:

Education

2011-12

Issued in December 2012

Table of Contents

Introduction	1
Key Statistics	2
Schools	2
Classrooms	3
Pupils	4
Citizen Pupils	6
Staff	7
Special Needs	8
Participation in Schooling	8
Higher Education	8
Adult Education	9
Educational Attainment	9
Statistical Tables	10
Explanatory Notes	29

Introduction

Statistics Centre - Abu Dhabi (SCAD) is pleased to present a set of important indicators about the education sector in the Emirate of Abu Dhabi for the last five years. The figures released reflect the Emirate's remarkable achievements in the various areas of social development, especially the education sector, in regard to which Abu Dhabi government has spared no effort in its endeavor to provide high quality educational infrastructure. This was reflected both in the significant increase in the number of pupils enrolled in the schools and students in universities of the Emirate.

This report presents statistics ranging from 2007-08 to 2011-12 for education. It starts with a brief overview of the main observations on the statistics. This section presents a summary of the key statistics. It provides a brief statement of findings relating to education sector, including schools, classrooms, pupils, staff, gross enrolment measures, progression to secondary schools, higher education, adult education and illiteracy.

The second section provides a suite of detailed tables for those wishing to see the detailed numbers relating to each of the topics. Where possible, a short time series is included to give the reader a sense of the progress being achieved over time.

The main sources for these statistics are Abu Dhabi Education Council, Ministry of Higher Education and Scientific Research, UAE University, Zayed University and Higher Colleges of Technology.

SCAD particularly appreciates the contribution of these entities in the production and supply of data, as part of production partnership with SCAD to ensure the Emirate has improved coverage and quality of statistics on all aspects of education and training.

The Explanatory Notes section at the end of this report provides an explanation of the key terms and technical concepts used in this publication. Readers are encouraged to refer to that section in conjunction with reading the statistics and information outlined in the report.

Key Statistics

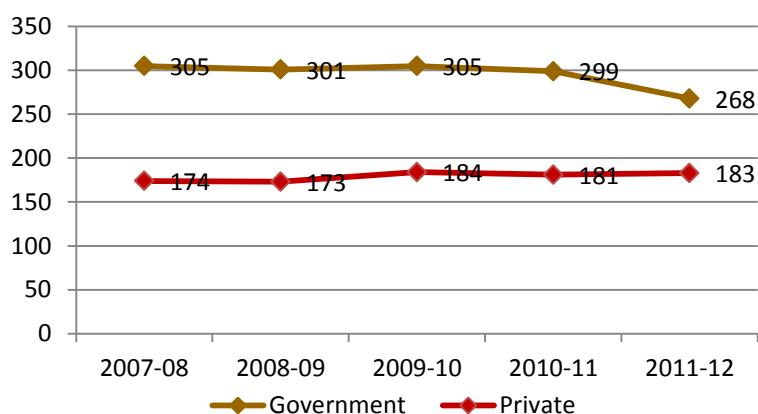
Schools

The total number of schools in Abu Dhabi Emirate varied over the period from 2007-08 to 2011-12. More specifically, the number of schools in government education decreased from 305 in the school year 2007-08 to 268 schools in 2011-12, whereas the number of schools in private education increased from 174 in the school year 2007-08 to 183 schools in 2011-12.

The total number of schools in the school year 2011-12 was 451, of which 54 were kindergartens, 80 cycle 1 schools, 46 cycle 2 schools, 36 secondary schools, and 235 multi-stage schools.

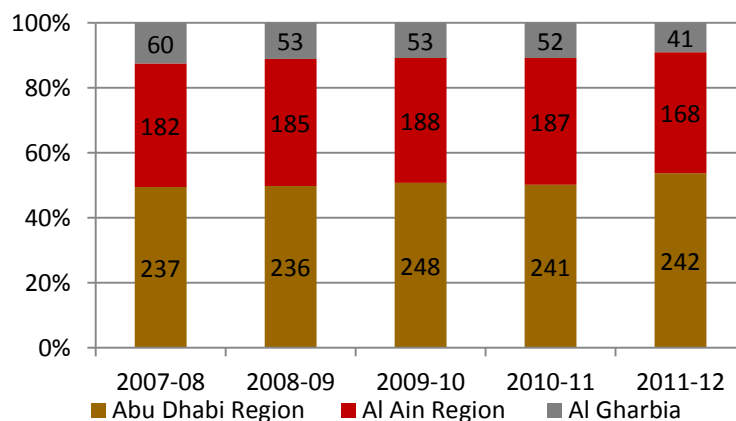
Since 2007-08, the number of schools in Abu Dhabi Region increased by 5, from 237 to 242. However, the number of schools in Al Ain Region decreased from 182 to 168 and in Al Gharbia the number decreased from 60 to 41.

Figure 1: Number of Schools by Sector, 2007-08 to 2011-12



Source: Statistics Centre - Abu Dhabi, Abu Dhabi Education Council

Figure 2: Proportion of Schools by Region, 2007-08 to 2011-12



Source: Statistics Centre - Abu Dhabi, Abu Dhabi Education Council

Classrooms

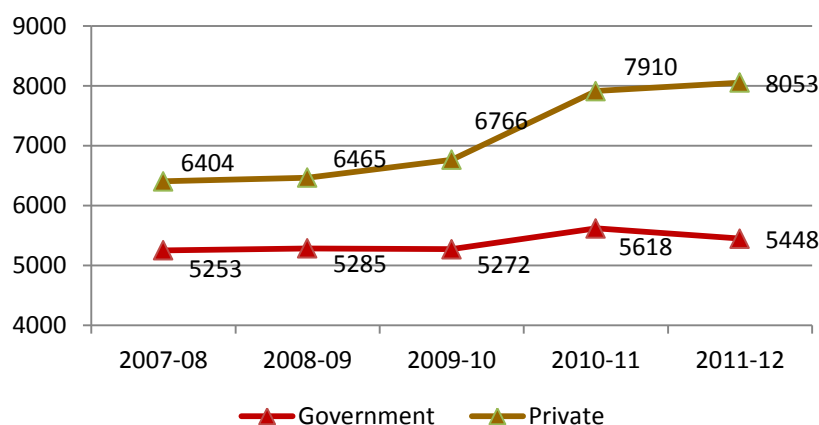
The total number of classrooms in Abu Dhabi Emirate increased from 11,657 in the school year 2007-08 to 13,501 in the school year 2011-12, an increase of 15.8% during the whole period, or an average annual increase of 3.7%.

This increase in the total number of classrooms is the net outcome of different changes in the number of classrooms by sector. The number of classrooms provided in government education rose by 3.7% in the period, whereas the number of classrooms in private education rose by 25.7% over the period.

The total number of classrooms in the school year 2011-12 was 13,501, of which 2,172 were kindergartens, 5,537 cycle 1 schools, 3,474 cycle 2 schools and 2,318 secondary schools. The corresponding figures for government and private education were 5,448 and 8,053.

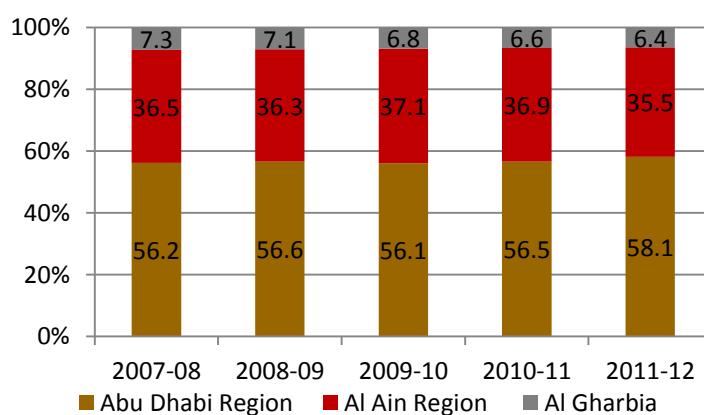
Since 2007-08, the number of classrooms in Abu Dhabi Region increased by 1293, from 6,551 to 7,844. Also the number of classrooms in Al Ain Region increased from 4,260 to 4,790 and in Al Gharbia the number increased from 864 to 867.

Figure 3: Number of classrooms by Sector, 2007-08 to 2011-12



Source: Statistics Centre - Abu Dhabi, Abu Dhabi Education Council

Figure 4: Percentage Distribution of Classrooms by Region, 2007-08 to 2011-12



Source: Statistics Centre - Abu Dhabi, Abu Dhabi Education Council

Pupils

The number of enrolled pupils in all educational stages up to the secondary stage increased from 258,450 in the school year 2007-08 to 310,620 in the school year 2011-12, (124,997 in Government and 185,623 in private) an increase of 20.2% during the whole period, or an average annual increase of 4.7%.

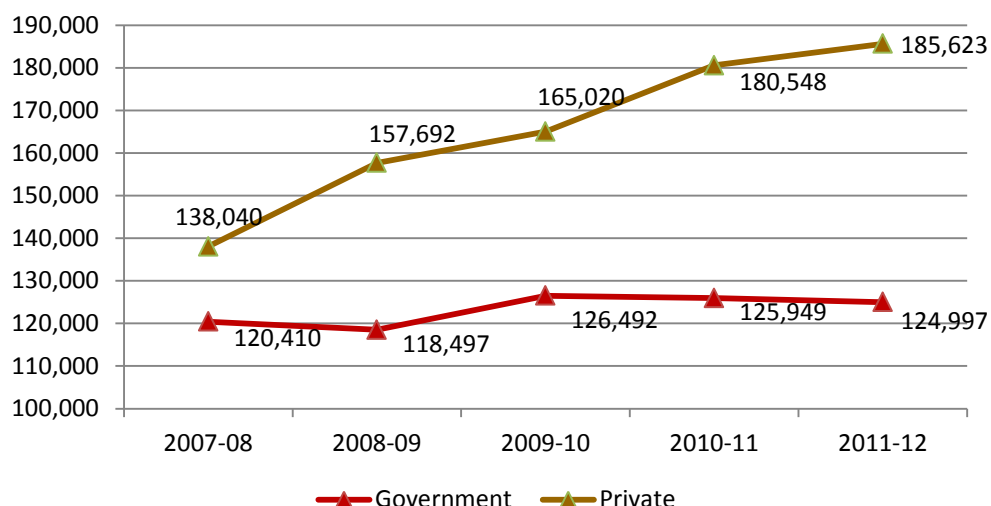
The patterns of increase observed in all regions of the Emirate. The number of pupils in Abu Dhabi Region increased by 24.4% from 151,473 to 188,389. However, in Al Ain Region the number of pupils increased by 14.3 from 92,109 to 105,319 and in Al Gharbia the number increased by 13.7 from 14,868 to 16,912.

During the last five years, the proportion of pupils enrolled in private education increased from 53.4% in 2007-08 to 59.8% in 2011-12.

The number of female pupils per 100 male pupils in all education stages for the Emirate decreased from 99.7 in 2007-08 to 95.8 in 2011-12. For the school year 2011-12 the corresponding figures for Abu Dhabi, Al Ain and the Al Gharbia Regions were 96.4, 94.4 and 97.4 respectively.

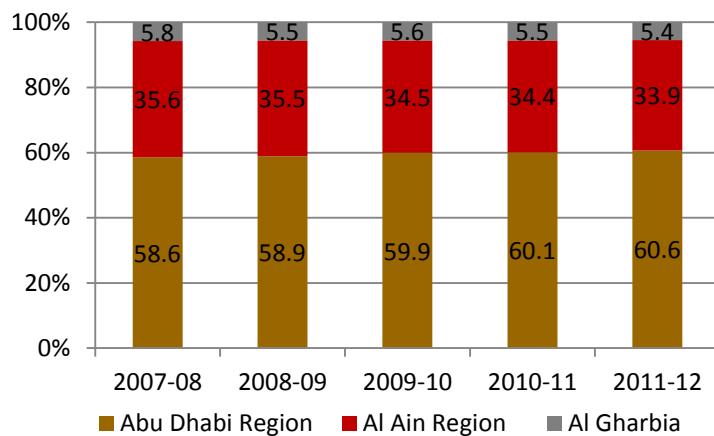
The number of pupils per classroom for the school year 2011-12 was 23.0 in the Emirate and the corresponding figures for Abu Dhabi, Al Ain and Al Gharbia Regions were 24.0, 22.0 and 19.5 respectively. The number of pupils per teacher for the 2011-12 was 14.0, and the corresponding figures for Abu Dhabi, Al Ain and the Al Gharbia Regions were 14.9, 13.2 and 10.8 respectively

Figure 5: Number of Pupils by Sector, 2007-08 to 2011-12



Source: Statistics Centre - Abu Dhabi, Abu Dhabi Education Council

Figure 6: Percentage Distribution of Pupils by Region, 2007-08 to 2011-12



Source: Statistics Centre - Abu Dhabi, Abu Dhabi Education Council

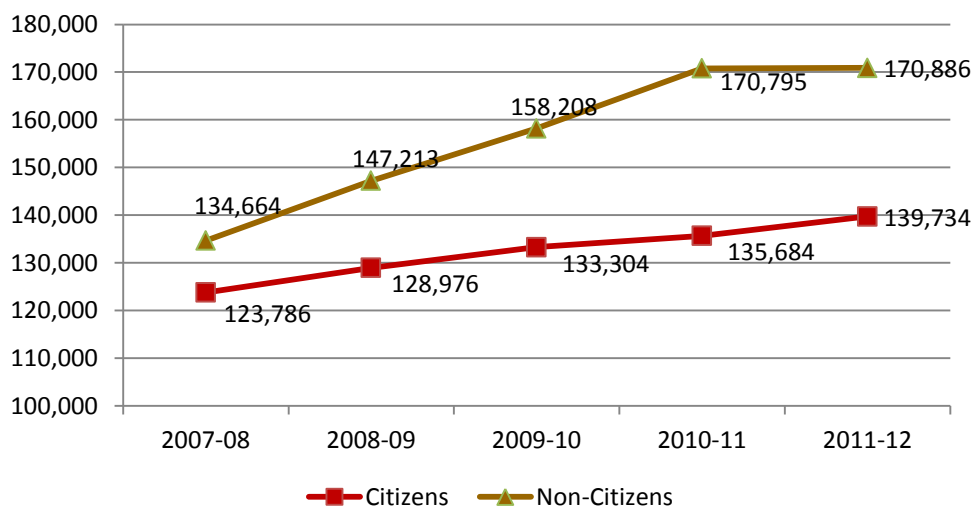
Citizen Pupils

Over the last 5 years, the number of enrolled citizen pupils in all educational stages up to the secondary stage increased from 123,786 in the school year 2007-08 to 139,734 in the year 2011-12, an increase of 12.9% over the period, or an average annual increase of 3.1%.

The number of citizen pupils per 100 non-citizen pupils in all education stages decreased from 91.9 in 2007-08 to 81.8 in 2011-12. The 2011-12 number of citizen pupils per 100 non-citizen pupils in the government sector is 9 times higher than in the private sector (302% and 33%) respectively.

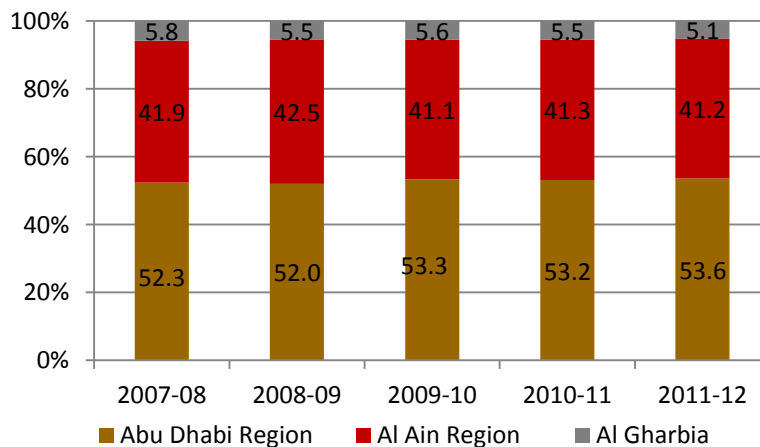
Similar patterns were observed in comparing the ratios by gender. The number of citizen males per 100 non-citizen males decline from 85.6 in 2007-08 to 79.6 in 2011-12, and citizen females per 100 non-citizen females also declined from 98.7 in 2007-08 to 84.1 in 2011-12

Figure 7: Number of Pupils by Citizenship, 2007-08 to 2011-12



Source: Statistics Centre - Abu Dhabi, Abu Dhabi Education Council

Figure 8: Percentage Distribution of Citizen Pupils by Region, 2007-08 to 2011-12



Source: Statistics Centre - Abu Dhabi, Abu Dhabi Education Council

Staff

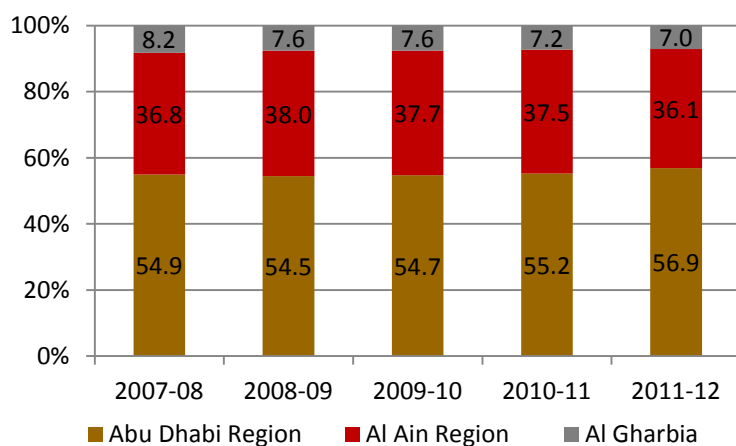
The total number of teachers increased from 19,408 in 2007-08 to 22,184 in the school year 2011-12, an increase of 14.3% during the whole period.

More specifically, the number of teachers in government education slightly increased from 10,245 in the school year 2007-08 to 10,451 teachers in 2011-12, whereas the number of teachers in private education increased from 9,163 in the school year 2007-08 to 11,733 teachers in 2011-12 a 28.0% increase during this period.

Over the last five years, the number of teachers per classroom was constant. The number of teachers per classroom for the school year 2011-12 was 1.6 and the corresponding figures for Abu Dhabi, Al Ain and the Al Gharbia Regions were (1.6, 1.7 and 1.8) respectively.

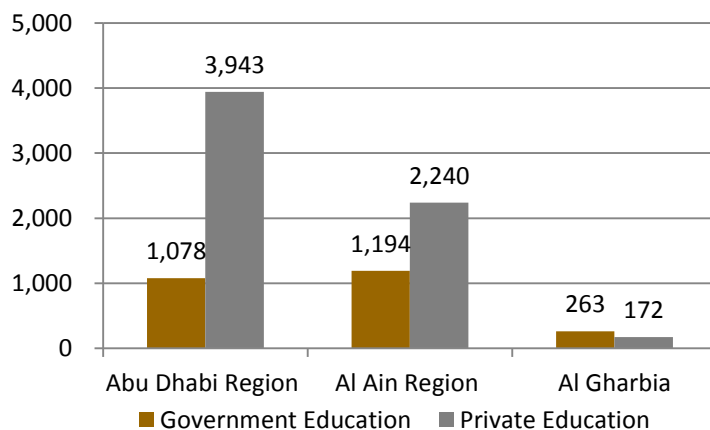
The total number of administrative staff increased from 2010-11 to 2011-12 by 10.3% (8,055 to 8,890). This increase has occurred in both government and private education.

Figure 9: Percentage Distribution of Teachers by Region, 2007-08 to 2011-12



Source: Statistics Centre - Abu Dhabi, Abu Dhabi Education Council

Figure 10: Numbers of Administrative Staff by Region and Sector, 2011-12



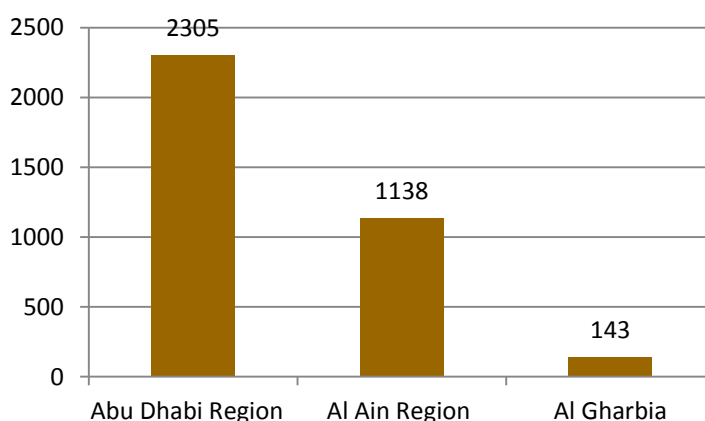
Source: Statistics Centre - Abu Dhabi, Abu Dhabi Education Council

Special Needs

There are 145 schools in government education with special education services in 2010-11: 56 schools in Abu Dhabi Region, 73 in Al Ain Region and 16 in Al Gharbia.

There are 3,586 pupils enrolled in under special education. Most of them with learning disabilities or speech and language disorders (72.3% and 13.7%).

Figure 11: Numbers of Special Needs Students in Government Education by Region, 2010-11



Source: Statistics Centre - Abu Dhabi, Abu Dhabi Education Council

Participation in Schooling

The gross enrolment ratio is the general level of participation in a given level of education. It indicates the capacity of the education system to enrol students of a particular age group. In 2011-12, the gross enrolment ratio for school level was 107.9 in the first education cycle, 100.9 in cycle 2 and 88.3 in secondary.

The 2011-12 progression ratios to secondary school for males, females and both genders were 90.6%, 93.4% and 92.0% respectively.

Higher Education

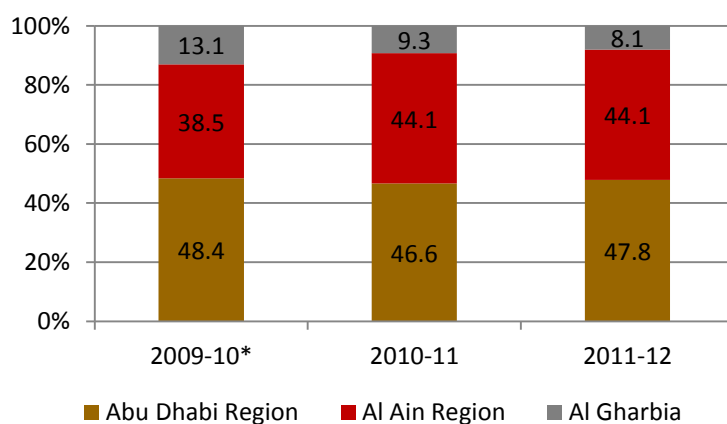
Across Abu Dhabi Emirate, the number of higher education institutions increased from 25 institutions in 2008-09 to 31 institutions in 2010-11. The number of universities remains at 9 in 2010-11 (3 government and 6 private) and the number of other higher education institutions (colleges and institutes) reached 22. The academic year 2010-11 witnessed the graduation of 6,750 students from higher education, of whom 3,573 students graduated from the government universities and institutions and 3,177 from the private universities and institutions.

Adult Education

The total number of literacy centres and adult education centres decreased from 114 in school year 2010-11 to 109 in 2011-12. The corresponding number of Family Development centres for 2011-12 was 10, with 76 home schooling centres and 23 other centres.

There are 13,610 students enrolled in literacy centres and adult education centres in 2011-12. It decreased by 10.7% compared with 2010-11 and the number of teachers increased by 5 teachers in 2011-12.

Figure 12: Percentage Distribution of Pupils in Literacy Centres and in Adult Education by Region



* Not including Home Schooling students

Source: Statistics Centre - Abu Dhabi, Abu Dhabi Education Council

Educational Attainment

Estimates of educational attainment for mid-2011 (10 years aged and over) shows that there were 138,478 who identified as illiterate, of whom 101,220 were males and 37,258 were females.

The estimated rate of illiteracy among the population aged 10 years and over declined from 12.6% in 2005 to 7.5% in 2011. This declining trend in illiteracy applies to both citizens and non-citizens and to males and females. The corresponding figures for Citizen males, females and both genders were (3.5, 8.7 and 6.0).

The estimated rate of illiteracy of the youth population (aged 15-24 years) was 6.4% in 2011. The corresponding figure for Citizen males, females and both genders were (0.6).

Statistical Tables

Table 1: Number of Schools by Region, 2007-08 to 2011-12	7
Table 2: Number of Schools by Sector, 2007-08 to 2011-12	7
Table 3: Number of Schools by Region, Sector and Education Stage, 2011-12	7
Table 4: Private Schools by Curriculum, 2009-10, 2010-11 and 2011-12	8
Table 5: Percentage Distribution of Classrooms by Region, 2007-08 to 2011-12	8
Table 6: Percentage Distribution of Classrooms by Sector, 2007-08 to 2011-12	8
Table 7: Percentage Distribution of Pupils by Region, 2007-08 to 2011-12	9
Table 8: Percentage Distribution of Pupils by Sector, 2007-08 to 2011-12	9
Table 9: Percentage of Pupils Enrolled in Private Education to by Region, 2007-08 to 2011-12	9
Table 10: Pupils per Classroom by Region, 2007-08 to 2011-12	9
Table 11: Pupils per Teacher by Region, 2007-08 to 2011-12	9
Table 12: Ratio of Female Pupils to Male Pupils in Government and Private Schools, 2007-08 to 2011-12	10
Table 13: Pupils by Region, Citizenship and Gender, 2007-08 to 2011-12	10
Table 14: Citizen Pupils and Their Percentage Distribution by Region, 2007-08 to 2011-12	11
Table 15: Citizen Pupils and Their Percentage Distribution by Sector, 2007-08 to 2011-12	11
Table 16: Ratio of Citizen Pupils to Non-Citizen Pupils in the Government and Private Schools by Region, 2007-08 to 2011-12	11
Table 17: Ratio of Citizen Pupils to Non-Citizen Pupils by Sector, 2007-08 to 2011-12	11
Table 18: Ratio of Citizen Pupils to Non-Citizen Pupils by Gender, 2007-08 to 2011-12	11
Table 19: Teachers by Sector, 2007-08 to 2011-12	12
Table 20: Teachers in Government Schools by Region, Citizenship and Gender, 2007-08 to 2011-12	12
Table 21: Teachers and Their Percentage Distribution by Region, 2007-08 to 2011-12	13
Table 22: Teachers per Classroom by Region, 2007-08 to 2011-12	13
Table 23: Administration Staff by Region and Gender, 2009-10 to 2011-12	13
Table 24: Administration staff by Region, Gender and Sector, 2011-12	14
Table 25: Administration staff and Their Percentage Distribution by Region, 2009-10 to 2011-12	14
Table 26: Special Need Students in Government Education by Region and Disabilities Type, 2010-11	14
Table 27: Schools, Teachers and Special Education Specialists by region, 2010-11	15
Table 28: Gross Enrolment Ratio by Educational Stage and Gender, 2007-08 to 2011-12	15
Table 29: Progression to Secondary School by Gender, 2007-08 to 2011-12	15
Table 30: Higher Education Institutions by Type, 2008-09 to 2010-11	15
Table 31: Higher Education Students by Citizenship, Sector and Gender, 2010-11	15
Table 32: Higher Education Graduates by Citizenship, Sector and Gender, 2010-11	16
Table 33: Literacy Centres and Adult Education by Type, 2009-10 to 2011-12	16
Table 34: Literacy Centres and Adult Education by Region and Gender, 2009-10 to 2011-12	16
Table 35: Pupils in Literacy Centres and Adult Education and Their Percentage Distribution by Region, 2009-10 to 2011-12	16
Table 36: Pupils in Literacy Centres and Adult Education and Their Percentage Distribution by Gender, 2009-10 to 2011-12	17
Table 37: Teachers in Literacy Centres and Adult Education and Percentage Distribution by Region, 2009-10 to 2011-12	17
Table 38: Teachers in Literacy Centres and Adult Education by Region, Citizenship and Gender, 2009-10 to 2011-12	18

Table 39: Total Population Estimates (10 years and over) by Region, Education Status and Gender, Mid 2011	19
Table 40: Citizens Population Estimates (10 years and over) by Region, Education Status and Gender, Mid 2011	20
Table 42: Illiteracy Rate (%) Among Population (10 years and above) by Citizenship and Gender, 2005 to 2011	22
Table 43: Literacy Rate (%) Among Population (10 years and above) by Citizenship and Gender, 2005 to 2011.....	22
Table 44: Illiteracy Rate (%) Among Youth Population (15-24 years) by Citizenship and Gender, 2005 to 2011	22
Table 45: Literacy Rate (%) Among Youth Population (15-24 years) by Citizenship and Gender, 2005 to 2011.....	23

Statistical Tables

Table 1: Number of Schools by Region, 2007-08 to 2011-12

Region	2007-08	2008-09	2009-10	2010-11	2011-12
Total Emirate	479	474	489	480	451
Abu Dhabi Region	237	236	248	241	242
Al Ain Region	182	185	188	187	168
Al Gharbia	60	53	53	52	41

Source: Abu Dhabi Education Council

Table 2: Number of Schools by Sector, 2007-08 to 2011-12

Sector	2007-08	2008-09	2009-10	2010-11	2011-12
Total Emirate	479	474	489	480	451
Government Education	305	301	305	299	268
Private Education	174	173	184	181	183

Source: Abu Dhabi Education Council

Table 3: Number of Schools by Region, Sector and Education Stage, 2011-12

Region & Sector	Education Stage					Total
	Kindergarten	Cycle 1	Cycle 2	Secondary	Multi-Stage	
Total Emirate	54	80	46	36	235	451
Government	48	80	46	36	58	268
Private	6	0	0	0	177	183
Abu Dhabi Region	30	38	27	24	123	242
Government	25	38	27	24	12	126
Private	5	0	0	0	111	116
Al-Ain Region	18	33	18	11	88	168
Government	17	33	18	11	32	111
Private	1	0	0	0	56	57
Al Gharbia	6	9	1	1	24	41
Government	6	9	1	1	14	31
Private	0	0	0	0	10	10

Source: Abu Dhabi Education Council

Table 4: Private Schools by Curriculum, 2009-10, 2010-11 and 2011-12

Curriculum	2009-10	2010-11	2011-12
Total	184	181	183
Ministry of Education	60	48	46
Abu Dhabi Education Council	-	3	1
English National Curriculum (British)	41	34	36
Indian	25	27	29
American	26	32	37
International	11	9	9
Pakistani	6	5	5
Canadian	3	2	2
Philippines	3	7	3
French	3	2	2
Iranian	3	2	2
Bangladeshi	1	1	1
German	1	1	1
Japanese	1	1	1
English Medium	-	3	4
International Baccalaureate Organization	-	2	2
SABIS System	-	2	2

Source: Abu Dhabi Education Council

Table 5: Percentage Distribution of Classrooms by Region, 2007-08 to 2011-12

Region	2007-08	2008-09	2009-10	2010-11	2011-12
Total Emirate	11,657	11,750	12,038	13,528	13,501
	Percentage				
	100	100	100	100	100
Abu Dhabi Region	56.2	56.6	56.1	56.5	58.1
Al Ain Region	36.5	36.3	37.1	36.9	35.5
Al Gharbia	7.3	7.1	6.8	6.6	6.4

Source: Statistics Centre- Abu Dhabi, Abu Dhabi Education Council

Table 6: Percentage Distribution of Classrooms by Sector, 2007-08 to 2011-12

Sector	2007-08	2008-09	2009-10	2010-11	2011-12
Total Emirate	11,657	11,750	12,038	13,528	13,501
	Percentage				
	100	100	100	100	100
Government Education	45.1	45.0	43.8	41.5	40.4
Private Education	54.9	55.0	56.2	58.5	59.6

Source: Statistics Centre- Abu Dhabi, Abu Dhabi Education Council

Table 7: Percentage Distribution of Pupils by Region, 2007-08 to 2011-12

Region	2007-08	2008-09	2009-10	2010-11	2011-12
Total Emirate	258,450	276,189	291,512	306,497	310,620
	Percentage				
	100.0	100.0	100.0	100.0	100.0
Abu Dhabi Region	58.6	58.9	59.9	60.1	60.6
Al Ain Region	35.6	35.5	34.5	34.4	33.9
Al Gharbia	5.8	5.5	5.6	5.5	5.4

Source: Statistics Centre - Abu Dhabi, Abu Dhabi Education Council

Table 8: Percentage Distribution of Pupils by Sector, 2007-08 to 2011-12

Sector	2007-08	2008-09	2009-10	2010-11	2011-12
Total Emirate	258,450	276,189	291,512	306,497	310,620
	Percentage				
	100	100	100	100	100
Government Education	46.6	42.9	43.4	41.1	40.2
Private Education	53.4	57.1	56.6	58.9	59.8

Source: Statistics Centre - Abu Dhabi, Abu Dhabi Education Council

Table 9: Percentage of Pupils Enrolled in Private Education to by Region, 2007-08 to 2011-12

Region	2007-08	2008-09	2009-10	2010-11	2011-12
	Percentage				
Total Emirate	53.4	57.1	56.6	58.9	59.8
Abu Dhabi Region	62.2	65.5	64.1	66.1	67.0
Al Ain Region	43.2	48.0	48.3	50.9	50.4
Al Gharbia	27.6	25.8	28.0	30.9	37.0

Source: Statistics Centre - Abu Dhabi, Abu Dhabi Education Council

Table 10: Pupils per Classroom by Region, 2007-08 to 2011-12

Region	2007-08	2008-09	2009-10	2010-11	2011-12
Total Emirate	22.2	23.5	24.2	22.7	23.0
Abu Dhabi Region	23.1	24.5	25.9	24.1	24.0
Al Ain Region	21.6	23.0	22.5	21.1	22.0
Al Gharbia	17.6	18.4	19.9	19.0	19.5

Source: Statistics Centre - Abu Dhabi, Abu Dhabi Education Council

Table 11: Pupils per Teacher by Region, 2007-08 to 2011-12

Region	2007-08	2008-09	2009-10	2010-11	2011-12
Total Emirate	13.3	13.6	14.3	13.8	14.0
Abu Dhabi Region	14.2	14.8	15.7	15.0	14.9
Al Ain Region	12.9	12.8	13.1	12.6	13.2
Al Gharbia	9.3	10.0	10.6	10.5	10.8

Source: Statistics Centre - Abu Dhabi, Abu Dhabi Education Council

Table 12: Ratio of Female Pupils to Male Pupils in Government and Private Schools, 2007-08 to 2011-12

Region	2007-08	2008-09	2009-10	2010-11	2011-12
	female pupils per 100 male pupils				
Total Emirate	99.7	97.4	96.7	95.9	95.8
Abu Dhabi Region	102.7	97.3	95.6	96.4	96.4
Al Ain Region	95.1	97.5	96.6	94.7	94.4
Al Gharbia	98.3	98.7	108.6	97.0	97.4

Source: Statistics Centre - Abu Dhabi, Abu Dhabi Education Council

Table 13: Pupils by Region, Citizenship and Gender, 2007-08 to 2011-12

Region, Citizenship and Gender	2007-08	2008-09	2009-10	2010-11	2011-12
Total Emirate	258,450	276,189	291,512	306,479	310,620
Citizens	123786	128976	133304	135684	139734
Male	59,682	63,461	66,501	68,044	70,336
Female	64,104	65,515	66,803	67,640	69,398
Non - Citizens	134664	147213	158208	170795	170886
Male	69,744	76,428	81,724	88,425	88,331
Female	64,920	70,785	76,484	82,370	82,555
Abu Dhabi Region					
Citizens	64799	67112	71062	72154	74967
Male	30395	33204	36,010	36155	37,775
Female	34404	33908	35,052	35999	37,192
Non - Citizens	86674	95595	103604	111993	113422
Male	44323	49283	53,265	57598	58,153
Female	42351	46312	50,339	54395	55,269
Al Ain Region					
Citizens	51820	54799	54833	56074	57575
Male	25,720	26,778	27,247	28,177	29,023
Female	26,100	28,021	27,586	27,897	28,552
Non - Citizens	40289	43363	45729	49284	47744
Male	21,491	22,915	23,897	25,923	25,149
Female	18,798	20,448	21,832	23,361	22,595
Al Gharbia					
Citizens	7167	7065	7409	7456	7192
Male	3,567	3,479	3,244	3,712	3,538
Female	3,600	3,586	4,165	3,744	3,654
Non - Citizens	7701	8255	8875	9518	9720
Male	3,930	4,230	4,562	4,904	5,029
Female	3,771	4,025	4,313	4,614	4,691

Source: Abu Dhabi Education Council

Table 14: Citizen Pupils and Their Percentage Distribution by Region, 2007-08 to 2011-12

Region	2007-08	2008-09	2009-10	2010-11	2011-12
Total Emirate	123,786	128,976	133,304	135,684	139,734
Abu Dhabi Region	52.3	52.0	53.3	53.2	53.6
Al Ain Region	41.9	42.5	41.1	41.3	41.2
Al Gharbia	5.8	5.5	5.6	5.5	5.1

Source: Statistics Centre - Abu Dhabi, Abu Dhabi Education Council

Table 15: Citizen Pupils and Their Percentage Distribution by Sector, 2007-08 to 2011-12

Sector	2007-08	2008-09	2009-10	2010-11	2011-12
Total Emirate	123,786	128,976	133,304	135,684	139,734
Government Education	74.0	70.7	69.3	68.1	67.2
Private Education	26.0	29.3	30.7	31.9	32.8

Source: Statistics Centre - Abu Dhabi, Abu Dhabi Education Council

Table 16: Ratio of Citizen Pupils to Non-Citizen Pupils in the Government and Private Schools by Region, 2007-08 to 2011-12

Region	2007-08	2008-09	2009-10	2010-11	2011-12
Citizen Pupils per 100 Non-Citizen Pupils					
Total Emirate	91.9	87.6	84.3	79.4	81.8
Abu Dhabi Region	74.8	70.2	68.6	64.4	66.1
Al Ain Region	128.6	126.4	119.9	113.8	120.6
Al Gharbia	93.1	85.6	83.5	78.3	74.0

Source: Statistics Centre - Abu Dhabi, Abu Dhabi Education Council

Table 17: Ratio of Citizen Pupils to Non-Citizen Pupils by Sector, 2007-08 to 2011-12

Sector	2007-08	2008-09	2009-10	2010-11	2011-12
Citizen Pupils per 100 Non-Citizen Pupils					
Total Emirate	91.9	87.6	84.3	79.4	81.8
Government Education	318.7	334.5	270.9	275.9	302.0
Private Education	30.3	31.5	33.0	31.5	32.8

Source: Statistics Centre - Abu Dhabi, Abu Dhabi Education Council

Table 18: Ratio of Citizen Pupils to Non-Citizen Pupils by Gender, 2007-08 to 2011-12

Sector	2007-08	2008-09	2009-10	2010-11	2011-12
Citizen Pupils per 100 Non-Citizen Pupils					
Total Emirate	91.9	87.6	84.3	79.4	81.8
Male	85.6	83.0	81.4	77.0	79.6
Female	98.7	92.6	87.3	82.1	84.1

Source: Statistics Centre - Abu Dhabi, Abu Dhabi Education Council

Table 19: Teachers by Sector, 2007-08 to 2011-12

Sector	2007-08	2008-09	2009-10	2010-11	2011-12
Total Emirate	19,408	20,239	20,372	22,218	22,184
Government Education	10,245	10,518	10,854	11,384	10,451
Private Education	9,163	9,721	9,518	10,834	11,733

Source: Statistics Centre - Abu Dhabi, Abu Dhabi Education Council

Table 20: Teachers in Government Schools by Region, Citizenship and Gender, 2007-08 to 2011-12

Region, Citizenship and Gender	2007-08	2008-09	2009-10	2010-11	2011-12
Total Emirate	10,245	10,518	10,854	11,384	10,451
Citizens	4158	4272	4,319	4200	3,956
Male	480	482	486	485	459
Female	3678	3790	3,833	3715	3,497
Non - Citizens	6087	6246	6,535	7184	6,495
Male	3699	3752	3,795	3869	3,096
Female	2388	2494	2,740	3315	3,399
Abu Dhabi Region					
Citizens	1931	1925	1,936	1896	1,780
Male	245	241	243	248	243
Female	1686	1684	1,693	1648	1,537
Non - Citizens	2626	2647	2,806	3154	2,887
Male	1576	1550	1,566	1608	1,364
Female	1050	1097	1,240	1546	1,523
Al Ain Region					
Citizens	1989	2129	2,170	2113	2,022
Male	219	227	231	226	212
Female	1,770	1,902	1,939	1,887	1,810
Non - Citizens	2,446	2,522	2,641	2,927	2,650
Male	1,640	1,704	1,725	1,754	1,383
Female	806	818	916	1,173	1,267
Al Gharbia					
Citizens	238	218	213	191	154
Male	16	14	12	11	4
Female	222	204	201	180	150
Non - Citizens	1,015	1,077	1,088	1,103	958
Male	483	498	504	507	349
Female	532	579	584	596	609

Source: Statistics Centre - Abu Dhabi, Abu Dhabi Education Council

Table 21: Teachers and Their Percentage Distribution by Region, 2007-08 to 2011-12

Region	2007-08	2008-09	2009-10	2010-11	2011-12
Total Emirate	19,408	20,239	20,372	22,218	22,184
	Percentage				
	100	100	100	100	100
Abu Dhabi Region	54.9	54.5	54.7	55.2	56.9
Al Ain Region	36.8	38.0	37.7	37.5	36.1
Al Gharbia	8.2	7.6	7.6	7.2	7.0

Source: Statistics Centre - Abu Dhabi, Abu Dhabi Education Council

Table 22: Teachers per Classroom by Region, 2007-08 to 2011-12

Region	2007-08	2008-09	2009-10	2010-11	2011-12
Total Emirate	1.66	1.72	1.69	1.64	1.64
Abu Dhabi Region	1.63	1.66	1.65	1.60	1.61
Al Ain Region	1.68	1.80	1.72	1.67	1.67
Al Gharbia	1.88	1.84	1.88	1.80	1.80

Source: Statistics Centre - Abu Dhabi, Abu Dhabi Education Council

Table 23: Administration Staff by Region and Gender, 2009-10 to 2011-12

Region and Gender	2010-11	2011-12
Total Emirate	8,107	8,890
Male	3,440	3,655
Female	4,667	5,235
Abu Dhabi Region	4,537	5,021
Male	1,976	2,153
Female	2,561	2,868
Al Ain Region	3,226	3,434
Male	1,306	1,348
Female	1,920	2,086
Al Gharbia	344	435
Male	158	154
Female	186	281

Source: Statistics Centre - Abu Dhabi, Abu Dhabi Education Council

Table 24: Administration staff by Region, Gender and Sector, 2011-12

Region and Gender	Government Education	Private Education	Total
Total Emirate	2,535	6,355	8,890
Male	774	2,881	3,655
Female	1,761	3,474	5,235
Abu Dhabi Region	1,078	3,943	5,021
Male	330	1,823	2,153
Female	748	2,120	2,868
Al Ain Region	1,194	2,240	3,434
Male	364	984	1,348
Female	830	1,256	2,086
Al Gharbia	263	172	435
Male	80	74	154
Female	183	98	281

Source: Statistics Centre - Abu Dhabi, Abu Dhabi Education Council

Table 25: Administration staff and Their Percentage Distribution by Region, 2009-10 to 2011-12

Region	2010-11	2011-12
Total Emirate	8,107	8,890
	Percentage	
	100	100
Abu Dhabi Region	56.0	56.5
Al Ain Region	39.8	38.6
Al Gharbia	4.2	4.9

Source: Statistics Centre - Abu Dhabi, Abu Dhabi Education Council

Table 26: Special Need Students in Government Education by Region and Disabilities Type, 2010-11

Disabilities Type	Abu Dhabi Region	Al Ain Region	Al Gharbia	Total
Total Emirate	2305	1138	143	3586
Students with learning disabilities	1677	814	100	2591
Visually impaired students	57	61	11	129
Students with hearing disabilities	141	54	10	205
Students of speech and language disorders	350	131	12	493
Students with Physically disabled	46	48	2	96
Students with health problems	2	4	1	7
Students with hyperactivity	6	4	4	14
Autistic students	14	5	-	19
Intellectual disability and mental impairment	12	17	3	32

Source: Abu Dhabi Education Council

Table 27: Schools, Teachers and Special Education Specialists by region, 2010-11

Region	Schools	Teacher	Teacher Assistant	Speech and Language Specialist	Supervisor
Total	145	195	24	5	7
Abu Dhabi Region	56	93	12	2	3
Al Ain Region	73	76	10	3	3
Al Gharbia	16	26	2	0	1

Source: Abu Dhabi Education Council

Table 28: Gross Enrolment Ratio by Educational Stage and Gender, 2007-08 to 2011-12

Educational Stage	2007-08	2008-09	2009-10	2010-11	2011-12
Kindergarten	79.5	83.4	81.8	82.4	90.6
Grade1	99.5	105.3	99.3	100.9	111.1
Cycle1	90.1	91.9	90.6	91.0	107.9
Cycle2	84.2	83.6	81.6	79.2	100.9
Secondary	76.5	77.9	78.0	75.5	88.3

* Excluding Special Education Pupils for whom education stage is not appropriate

Source: Statistics Centre - Abu Dhabi, Abu Dhabi Education Council

Table 29: Progression to Secondary School by Gender, 2007-08 to 2011-12

Gender	2007-08	2008-09	2009-10	2010-11	2011-12
Total	95.5	104	101.4	99.2	92.0
Males	93.8	102.6	100.4	97.2	90.6
Females	97.2	105.4	102.4	101.3	93.4

* Ratio of progression > 100 due to migration, repetition

Source: Statistics Centre - Abu Dhabi, Abu Dhabi Education Council

Table 30: Higher Education Institutions by Type, 2008-09 to 2010-11

Type	2008-09	2009-10	2010-11
Total Emirate	25	29	31
Universities	9	9	9
Colleges	12	13	15
Institutes	4	7	7

Source: Ministry of Higher Education and Scientific Research

Table 31: Higher Education Students by Citizenship, Sector and Gender, 2010-11

Citizenship and Sector	Males		Females		Total	
	Number	%	Number	%	Number	%
Citizens	12910	100.0	20906	100.0	33816	100.0
Government	6274	48.6	16559	79.2	22,833	67.5
Private	6636	51.4	4347	20.8	10,983	32.5
Non - Citizens	4992	100.0	6504	100.0	11496	100.0
Government	1224	24.5	2042	31.4	3,266	28.4
Private	3768	75.5	4462	68.6	8,230	71.6

*Excluding 365 students in Zayed University unknown Citizenship

Sources: Statistics Centre - Abu Dhabi, Ministry of Higher Education and Scientific Research, UAE University, Zayed University, Higher College of Technology

Table 32: Higher Education Graduates by Citizenship, Sector and Gender, 2010-11

Citizenship and Sector	Males		Females		Total	
	Number	%	Number	%	Number	%
Citizens	1603	100.0	2766	100.0	4369	100.0
Government	923	57.6	2204	79.7	3,127	71.6
Private	680	42.4	562	20.3	1,242	28.4
Non - Citizens	756	100.0	1625	100.0	2381	100.0
Government	142	18.8	304	18.7	446	18.7
Private	614	81.2	1321	81.3	1,935	81.3

Sources: Statistics Centre - Abu Dhabi, Ministry of Higher Education and Scientific Research, UAE University, Zayed University, Higher College of Technology

Table 33: Literacy Centres and Adult Education by Type, 2009-10 to 2011-12

Centers	2009-10	2010-11	2011-12
Total	37	114	109
Family Development Centres	11	11	10
Home Schooling	-	77	76

Source: Abu Dhabi Education Council

Table 34: Literacy Centres and Adult Education by Region and Gender, 2009-10 to 2011-12

Region and Gender	2009-10*	2010-11	2011-12
Total Emirate	37	114	109
Male	14	56	56
Female	23	58	53
Abu Dhabi Region	14	30	27
Male	6	16	15
Female	8	14	12
Al Ain Region	13	58	56
Male	4	28	28
Female	9	30	28
Al Gharbia	10	26	26
Male	4	12	13
Female	6	14	13

* Not including Home Schooling Centres

Source: Abu Dhabi Education Council

Table 35: Pupils in Literacy Centres and Adult Education and Their Percentage Distribution by Region, 2009-10 to 2011-12

Region	2009-10*	2010-11	2011-12
Total Emirate	9468	15242	13610
Percentage	100	100	100
Abu Dhabi Region	48.4	46.6	47.8
Al Ain Region	38.5	44.1	44.1
Al Gharbia	13.1	9.3	8.1

* Not including Home Schooling Centres

Source: Statistics Centre - Abu Dhabi, Abu Dhabi Education Council

Table 36: Pupils in Literacy Centres and Adult Education and Their Percentage Distribution by Gender, 2009-10 to 2011-12

Gender	2009-10*	2010-11	2011-12
Total Emirate	9468	15242	13610
Percentage	100	100	100
Male	55.9	60.3	63.0
Female	44.1	39.7	37.0

* Not including Home Schooling Centres

Source: Statistics Centre - Abu Dhabi, Abu Dhabi Education Council

Table 37: Teachers in Literacy Centres and Adult Education and Percentage Distribution by Region, 2009-10 to 2011-12

Region	2009-10	2010-11	2011-12
Total Emirate	258	250	255
Percentage	100	100	100
Abu Dhabi Region	39.5	31.6	34.1
Al Ain Region	27.9	33.2	31.8
Al Gharbia	32.6	35.2	34.1

Source: Statistics Centre - Abu Dhabi, Abu Dhabi Education Council

Table 38: Teachers in Literacy Centres and Adult Education by Region, Citizenship and Gender, 2009-10 to 2011-12

Region, Citizenship and Gender	2009-10	2010-11	2011-12
Total Emirate	258	250	255
Citizens	155	137	156
Male	5	4	4
Female	150	133	152
Non-Citizens	103	113	99
Male	0	16	23
Female	103	97	76
Abu Dhabi Region	102	79	87
Citizens	62	52	55
Male	4	4	4
Female	58	48	51
Non-Citizens	40	27	32
Male	0	13	23
Female	40	14	9
Al Ain Region	72	83	81
Citizens	55	63	74
Male	1	0	0
Female	54	63	74
Non-Citizens	17	20	7
Male	0	3	0
Female	17	17	7
Al Gharbia	84	88	87
Citizens	38	22	27
Male	0	0	0
Female	38	22	27
Non-Citizens	46	66	60
Male	0	0	0
Female	46	66	60

Source: Abu Dhabi Education Council

Table 39: Total Population Estimates (10 years and over) by Region, Education Status and Gender, Mid 2011

Region and Educational Status	Males	Females	Total
Abu Dhabi Emirate	1,361,968	493,154	1,855,122
Illiterate	101,220	37,258	138,478
Read and Write	258,576	63,327	321,903
Primary	219,910	69,769	289,679
Preparatory	244,247	75,204	319,451
Secondary	297,266	141,325	438,591
Above Secondary and Below University	57,425	25,667	83,093
University	157,221	72,133	229,354
Higher Diploma	6,111	2,724	8,835
Master	14,443	4,632	19,076
Ph.D.	5,549	1,115	6,664
Abu Dhabi Region	831,665	314,750	1,146,415
Illiterate	62,345	23,526	85,871
Read and Write	159,251	41,089	200,340
Primary	134,058	44,114	178,172
Preparatory	148,456	47,382	195,837
Secondary	180,165	89,086	269,251
Above Secondary and Below University	35,147	16,875	52,022
University	96,273	47,054	143,328
Higher Diploma	3,714	1,773	5,487
Master	8,846	3,111	11,957
Ph.D.	3,410	740	4,150
Al Ain Region	336,400	159,120	495,520
Illiterate	23,916	12,251	36,167
Read and Write	61,124	19,823	80,947
Primary	54,775	22,889	77,663
Preparatory	61,724	24,825	86,549
Secondary	76,167	46,612	122,779
Above Secondary and Below University	14,019	7,834	21,853
University	38,290	22,350	60,640
Higher Diploma	1,545	847	2,392
Master	3,514	1,354	4,868
Ph.D.	1,328	334	1,662
Al Gharbia	193,903	19,284	213,187
Illiterate	14,959	1,480	16,439
Read and Write	38,201	2,415	40,616
Primary	31,077	2,766	33,843
Preparatory	34,067	2,997	37,064
Secondary	40,934	5,628	46,562
Above Secondary and Below University	8,259	959	9,218
University	22,658	2,728	25,386
Higher Diploma	852	103	955
Master	2,083	167	2,251
Ph.D.	812	41	853

Source: Statistics Centre - Abu Dhabi

Table 40: Citizens Population Estimates (10 years and over) by Region, Education Status and Gender, Mid 2011

Region and Educational Status	Males	Females	Total
Abu Dhabi Emirate	164,071	154,105	318,176
Illiterate	5,628	13,423	19,050
Read and Write	14,552	15,067	29,619
Primary	29,262	24,722	53,984
Preparatory	37,869	27,836	65,706
Secondary	52,412	51,994	104,406
Above Secondary and Below University	5,922	4,553	10,476
University	15,653	15,390	31,042
Higher Diploma	950	608	1,558
Master	1,415	362	1,776
Ph.D.	408	151	559
Abu Dhabi Region	88,401	83,294	171,695
Illiterate	3,032	7,255	10,287
Read and Write	7,841	8,144	15,984
Primary	15,766	13,362	29,129
Preparatory	20,404	15,045	35,449
Secondary	28,240	28,103	56,343
Above Secondary and Below University	3,191	2,461	5,652
University	8,434	8,318	16,752
Higher Diploma	512	329	841
Master	762	196	958
Ph.D.	220	81	301
Al Ain Region	64,373	63,412	127,785
Illiterate	2,208	5,523	7,731
Read and Write	5,709	6,200	11,909
Primary	11,481	10,173	21,654
Preparatory	14,858	11,454	26,312
Secondary	20,564	21,395	41,959
Above Secondary and Below University	2,324	1,874	4,197
University	6,141	6,333	12,474
Higher Diploma	373	250	623
Master	555	149	704
Ph.D.	160	62	222
Al Gharbia	11,297	7,399	18,696
Illiterate	387	644	1,032
Read and Write	1,002	723	1,725
Primary	2,015	1,187	3,202
Preparatory	2,607	1,336	3,944
Secondary	3,609	2,496	6,105
Above Secondary and Below University	408	219	626
University	1,078	739	1,817
Higher Diploma	65	29	95
Master	97	17	115
Ph.D.	28	7	35

Source: Statistics Centre - Abu Dhabi

Table 41: Non-Citizens Population Estimates (10 years and over) by Region, Education Status and Gender, Mid 2011

Region and Educational Status	Males	Females	Total
Abu Dhabi Emirate	1,197,897	339,049	1,536,946
Illiterate	95,592	23,835	119,427
Read and Write	244,024	48,260	292,284
Primary	190,648	45,046	235,694
Preparatory	206,377	47,368	253,745
Secondary	244,853	89,331	334,185
Above Secondary and Below University	51,503	21,114	72,617
University	141,569	56,743	198,312
Higher Diploma	5,160	2,116	7,277
Master	13,029	4,270	17,299
Ph.D.	5,141	964	6,106
Abu Dhabi Region	743,264	231,456	974,720
Illiterate	59,312	16,271	75,584
Read and Write	151,410	32,945	184,356
Primary	118,292	30,751	149,044
Preparatory	128,052	32,336	160,388
Secondary	151,925	60,983	212,908
Above Secondary and Below University	31,956	14,414	46,370
University	87,840	38,736	126,576
Higher Diploma	3,202	1,445	4,646
Master	8,084	2,915	10,999
Ph.D.	3,190	658	3,848
Al Ain Region	272,027	95,708	367,735
Illiterate	21,708	6,728	28,436
Read and Write	55,415	13,623	69,038
Primary	43,294	12,716	56,010
Preparatory	46,866	13,371	60,237
Secondary	55,603	25,217	80,820
Above Secondary and Below University	11,696	5,960	17,656
University	32,148	16,018	48,166
Higher Diploma	1,172	597	1,769
Master	2,959	1,205	4,164
Ph.D.	1,168	272	1,440
Al Gharbia	182,606	11,885	194,491
Illiterate	14,572	836	15,407
Read and Write	37,199	1,692	38,890
Primary	29,062	1,579	30,641
Preparatory	31,460	1,660	33,120
Secondary	37,325	3,131	40,457
Above Secondary and Below University	7,851	740	8,591
University	21,581	1,989	23,570
Higher Diploma	787	74	861
Master	1,986	150	2,136
Ph.D.	784	34	818

Source: Statistics Centre - Abu Dhabi

Table 42: Illiteracy Rate (%) Among Population (10 years and above) by Citizenship and Gender, 2005 to 2011

Citizenship and Gender	2005	2008	2009	2010	2011
Total Emirate	12.6	9.5	8.3	7.9	7.5
Male	14.2	10.6	9.2	8.7	7.4
Female	9.1	7.3	6.6	6.4	7.6
Citizens	8.3	6.8	6.3	6.1	6.0
Male	5.0	4.0	3.7	3.5	3.5
Female	11.5	9.7	9.0	8.8	8.7
Non-Citizens	13.9	10.2	8.9	8.4	7.8
Male	16.0	11.8	10.2	9.7	8.0
Female	7.9	6.1	5.4	5.2	7.0

Source: Statistics Centre - Abu Dhabi

Table 43: Literacy Rate (%) Among Population (10 years and above) by Citizenship and Gender, 2005 to 2011

Citizenship and Gender	2005	2008	2009	2010	2011
Total Emirate	87.4	90.5	91.7	92.1	92.5
Male	85.8	89.4	90.8	91.3	92.6
Female	90.9	92.7	93.4	93.6	92.4
Citizens	91.7	93.2	93.7	93.9	94.0
Male	95.0	96.0	96.3	96.5	96.5
Female	88.5	90.3	91.0	91.2	91.3
Non-Citizens	86.1	89.8	91.1	91.6	92.2
Male	84.0	88.2	89.8	90.3	92.0
Female	92.1	93.9	94.6	94.8	93.0

Source: Statistics Centre - Abu Dhabi

Table 44: Illiteracy Rate (%) Among Youth Population (15-24 years) by Citizenship and Gender, 2005 to 2011

Citizenship and Gender	2005	2008	2009	2010	2011
Total Emirate	5.8	4.3	3.7	3.5	6.4
Male	7.5	5.5	4.7	4.5	7.1
Female	3.7	2.8	2.5	2.4	4.9
Citizens	0.8	0.6	0.5	0.5	0.6
Male	0.6	0.5	0.4	0.4	0.6
Female	1.0	0.7	0.6	0.6	0.6
Non-Citizens	9.1	6.6	5.6	5.3	8.6
Male	11.2	8.1	6.8	6.5	9.0
Female	5.8	4.4	3.9	3.7	7.6

Source: Statistics Centre - Abu Dhabi

Table 45: Literacy Rate (%) Among Youth Population (15-24 years) by Citizenship and Gender, 2005 to 2011

Citizenship and Gender	2005	2008	2009	2010	2011
Total Emirate	94.2	95.7	96.3	96.5	93.6
Male	92.5	94.5	95.3	95.5	92.9
Female	96.3	97.2	97.5	97.6	95.1
Citizens	99.2	99.4	99.5	99.5	99.4
Male	99.4	99.5	99.6	99.6	99.4
Female	99.0	99.3	99.4	99.4	99.4
Non-Citizens	90.9	93.4	94.4	94.7	91.4
Male	88.8	91.9	93.2	93.5	91.0
Female	94.2	95.6	96.1	96.3	92.4

Source: Statistics Centre - Abu Dhabi

Explanatory Notes

Glossary

This report contains certain terms specific to education that are necessary when analysing the education statistics of Abu Dhabi Emirate. They include the following terms:

Gross Enrolment Ratio

This is number of pupils, regardless of age enrolled in a particular education stage / the number of population in that stage's official age group x 100.

School Year

This is the period of time in which a student completes 1 level of education. In the UAE the school year usually starts in September of a year and ends in June of the next year. For example, the 2009-10 school year started in September 2009 and ended in June 2010.

Literacy Rate

This is number of literate people (10 years and above or 15-24 years)/total number of population (10 years and above or 15-24 years) x 100.

Illiteracy Rate

This is number of illiterate people (10 years and above or 15-24 years)/total number of population (10 years and above or 15-24 years) x 100.

Data sources

Data are obtained from Abu Dhabi Education Council, Ministry of Higher Education and Scientific Research, UAE University, Zayed University and Higher Colleges of Technology. The data are processed and passed to Statistic Centre – Abu Dhabi for further editing and compilation.

Technical notes

Notes on tables

Changes (levels and %) in all tables are based on unrounded numbers.

Totals in some tables may not add up due to rounding.

Symbols used

“> 100%” rate of change exceeds one hundred%.

More information and next release

For more information about Education and other official statistics, please visit the statistics link on the SCAD website at <http://www.scad.ae>

The next release is expected in *November 2013* for the school year *2012-13*.

