



مركز الإحصاء  
STATISTICS CENTRE

# Environment Statistics

# 2017

Release Date: Oct 2018

## Contents

Foreword .....	3
Key Points .....	7
Climate Statistics .....	7
Temperatures .....	7
Rainfall .....	9
Relative humidity .....	9
Atmospheric Pressure .....	10
Wind Speed .....	11
Solar Radiation .....	13
Air Statistics .....	15
Air quality in urban areas .....	16
Air pollutant emissions - oil and gas sector .....	19
Carbon Dioxide Emissions – oil and gas sector .....	20
Water statistics .....	21
Non-conventional water resources .....	21
Wastewater .....	21
Marine water quality .....	23
Health and safety statistics .....	26
Food Poisoning and foodborne illnesses .....	26
Waste statistics .....	27
Solid Waste .....	27
Biodiversity Statistics .....	29
Known and threatened species .....	29
Statistical Tables .....	31
Explanatory Notes .....	46
Glossary .....	46
Abbreviations used .....	57
Data sources .....	57
Symbols used .....	57
Notes on tables .....	58
More information and next release .....	58
<b>References .....</b>	<b>58</b>

## List of Tables

Table 1.1: Average air temperature by region and month 2017	8
Table 1.2: Average rainfall by region and month 2017	9
Table 1.3: Average relative humidity by region and month 2017	10
Table 1.4: Average atmospheric pressure by region and month 2017	11
Table 1.5: Average wind speed by region and month 2017	12
Table 1.6: Average daily sunshine in Abu Dhabi and Al Ain regions by month 2017	13
Table 1.7: Average daily total solar radiation by region and month 2017	14
Table 2.1: Annual average of air pollution indicators in urban areas by region and station 2017	16
Table 2.2: Annual average of carbon monoxide concentration in ambient air by region	16
Table 2.3: Annual average of noise Level by region	17
Table 2.4: Air pollutant total emissions – oil and gas sector	18
Table 2.5: Per capita air pollutant total emissions - oil and gas sector	19
Table 2.6: Carbon dioxide emissions - oil and gas sector	19
Table 3.1: Total non-conventional water resources by type	20
Table 3.2: Wastewater statistics	20
Table 3.3: Total wastewater treatment plants capacity	21
Table 3.4: Wastewater quality	21
Table 3.5: Marine waters quality in the city Abu Dhabi 2017	22
Table 3.6: Concentration of natural nutrients in marine waters - 2017	23
Table 4.1: Number of food poisoning and foodborne illnesses by type	24
Table 5.1: Non-hazardous solid waste generation by region and source activity 2017	25
Table 6.1: Total known and threatened species	25
Table 1 : Air temperature by month - Abu Dhabi 2017	26
Table 2 : Air temperature by month – Al Ain 2017	26
Table 3 : Air temperature by month – Al Dhafra 2017	27
Table 4 : Air temperature by month – The Islands 2017	27
Table 5 : Rainfall in Abu Dhabi and Al Ain regions by month - 2017	28

Table 6: Rainfall in Al Dhafra and The Islands by month 2017	30
Table 7: Relative humidity by month - Abu Dhabi 2017	32
Table 8: Relative humidity by month - Al Ain 2017	32
Table 9 : Relative humidity by month - Al Dhafra 2017	33
Table 10 : Relative humidity by month – The Islands 2017	33
Table 11 : Wind speed by month - Abu Dhabi 2017	34
Table 12: Wind speed by month - Al Ain 2017	34
Table 13: Wind speed by month - Al Dhafra 2017	35
Table 14: Wind speed by month - The Islands 2017	35
Table 15 : Daily total solar radiation by month - Abu Dhabi 2017	36
Table 16: Daily total solar radiation by month – Al Ain 2017	36
Table 17: Daily total solar radiation by month - Al Dhafra 2017	37
Table 18: Daily total solar radiation by month – The Islands 2017	37
Table 19: Annual average of Sulphur dioxide concentration in ambient air by region	38
Table 20: Annual average of nitrogen dioxide concentration in ambient air by region	38
Table 21 : Annual average of ground level ozone concentration in ambient air by region	39
Table 22: Annual average of particulate matter (PM10) concentration in ambient air by region	39
Table 23: Sulphur dioxide emissions – oil and gas sector	40
Table 24: Nitrogen oxides emissions - oil and gas sector	40
Table 25: Volatile organic compounds emissions - oil and gas sector	41
Table 26: Carbon dioxide emissions - oil and gas sector	42
Table 27: Per capita carbon dioxide emissions - oil and gas sector	43



## List of Figures

Figure 1: Average maximum and minimum air temperature by region and month 2017	8
Figure 2: Annual rainfall average - Abu Dhabi Emirates	9
Figure 3: Average relative humidity by region and month 2017	10
Figure 4: Average atmospheric pressure by month 2017	11
Figure 5: Average daily total solar radiation by region and month 2017	14
Figure 6: Air pollutant total emissions - oil and gas sector	18
Figure 7: Quantity of wastewater	21
Figure 8: Percentage distribution of non-hazardous solid waste generation by region 2017	29
Figure 9: Percentage distribution of non-hazardous solid waste by disposal method 2017	29
Figure 10: Percentage of threatened species from total known species- 2017	31

## Foreword

This report presents various environmental statistics of the Emirate of Abu Dhabi in 2017, including climate statistics, air statistics, and air quality and pollutant emissions. It also contains statistics covering water, food safety, waste statistics as well as biodiversity statistics.

The key sources of data used in this report are the National Centre of Meteorology and Seismology, Environment Agency - Abu Dhabi, Abu Dhabi National Oil Company (ADNOC), Abu Dhabi Water and Electricity Company ADWEC, Abu Dhabi Water & Electricity Authority - ADWEA, Abu Dhabi Sewerage Services Company (ADSSC), Health Authority - Abu Dhabi (HAAD). In addition to the Centre of Waste Management - Abu Dhabi.

The "Explanatory Notes" section at the end of this report provides an explanation of the key terms and technical concepts used in this publication.

## Key Points

### Climate Statistics

The Emirate of Abu Dhabi has a desert climate with high temperatures, especially in summer. Abu Dhabi is located in the dry tropical zone, where Tropic of Cancer passes in the southern part of the Emirate. Moreover, high temperature in summer causes high relative humidity, especially in coastal areas. The winter of Abu Dhabi is generally warm as temperatures drop to low levels. The Emirate suffers from scarcity of rain throughout the year. The Emirate contains different geographic provinces including coastal areas, inner desert areas in addition to highlands, where each part enjoys different temperatures. Seasonal northerly winds blow across the UAE helping to ameliorate the weather when they are not loaded with dust, in addition to the brief moisture-laden south-easterly winds. The wind often blows from south, southeast and southwest or north, northwest and northeast. Another characteristic of the Emirate's weather is the high rate of water evaporation due to several factors, including wind speed, blowing force, high temperatures and low rainfall.

### Temperatures

Abu Dhabi climate shows variation in temperatures in each season of the year. Table (1.1) displays the change in average temperatures, where the lowest degree was 18.8 degrees Celsius and it recorded in February in the Islands, while the highest temperature was 38.7 degrees Celsius and it recorded in Al Ain region in July. Figure (1) illustrates the average maximum and minimum temperature values in Abu Dhabi Emirate, where it shows that the average maximum temperature is 45.8 degrees Celsius while the minimum average temperature was less than 13.0 degrees Celsius in the winter. Statistical tables number (1 - 4) in the Annex display the change of temperature values and average maximum and minimum in addition to the absolute maximum and minimum for each region by month.

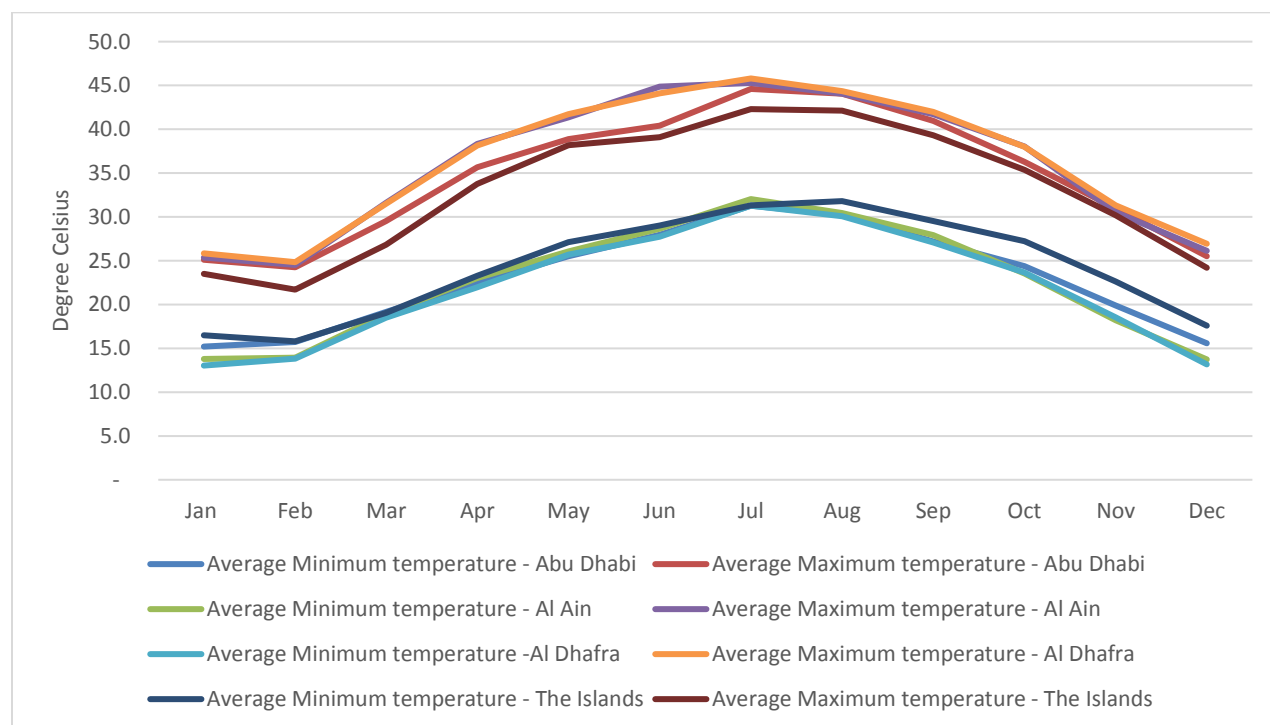
**Table 1.1: Average air temperature by region and month - 2017**

(Degree Celsius)

Month	Abu Dhabi	Al Ain	Al Dhafra	The Islands
January	20.2	19.6	19.4	20.0
February	20.0	19.2	19.3	18.8
March	24.3	25.3	25.0	22.9
April	29.1	30.7	30.1	28.5
May	32.2	33.7	33.7	32.7
June	34.2	36.8	35.9	34.1
July	37.9	38.7	38.5	36.8
August	37.2	37.3	37.2	37.0
September	34.1	34.8	34.5	34.4
October	30.3	30.8	30.8	31.3
November	25.4	24.4	24.9	26.4
December	20.5	19.9	20.1	20.9

Source: National Centre of Meteorology and Seismology , Statistics Centre- Abu Dhabi

**Figure 1: Average maximum and minimum air temperature by region and month - 2017**



Source: Statistics Centre- Abu Dhabi

## Rainfall

Abu Dhabi characterized by scanty and abrupt rainfall, which occurs few times during wintertime in different parts of the Emirate; it also rains during spring and summer seasons on the mountains, which are located mostly in Al Ain region. Table (1.2) displays average rainfall by region and month, annual rainfall average where increased from 60.7 millimetres in 2016 to 81.4 millimetres in 2017 in the Emirates of Abu Dhabi as shown in figure (2).

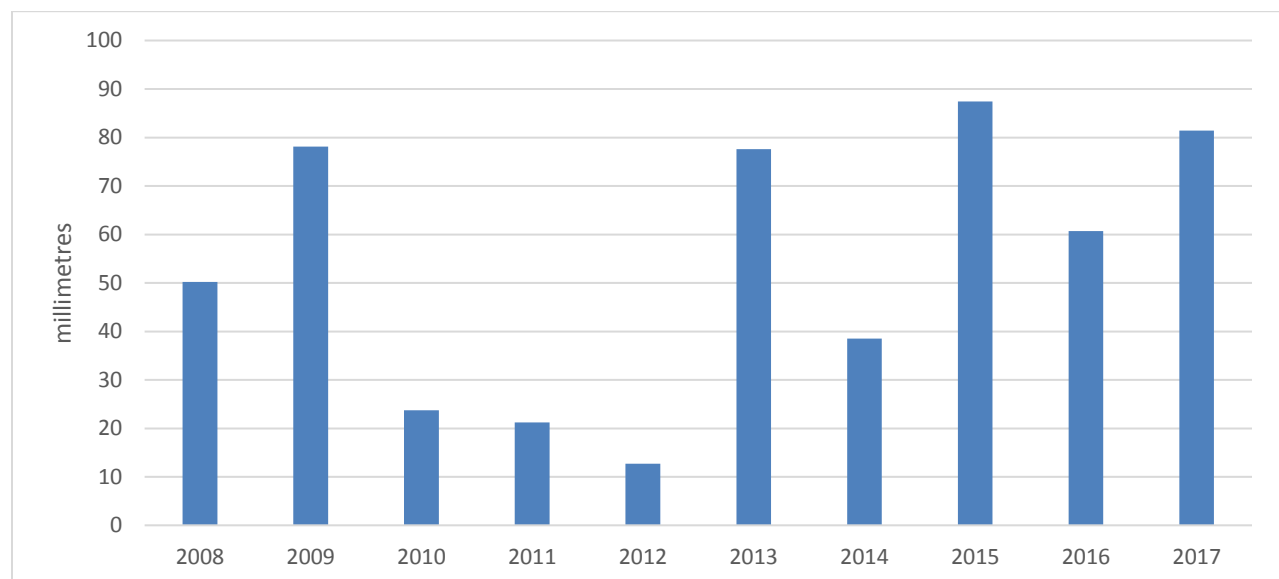
**Table 1.2: Average rainfall by region and month - 2017**

(Millimetres)

Month	Abu Dhabi	Al Ain	Al Dhafra	The Islands
January	1.4	18.1	3.3	0.8
February	12.0	14.1	11.4	26.5
March	41.5	50.6	26.4	80.3
April	0.0	0.0	0.0	0.0
May	0.0	1.1	0.2	0.0
June	0.0	0.0	0.0	0.0
July	0.2	5.2	1.5	0.1
August	0.1	3.2	0.6	0.0
September	0.0	0.1	7.2	0.0
October	0.0	0.0	0.0	0.0
November	0.0	0.0	0.0	0.0
December	1.4	10.5	6.5	1.0

Source: National Centre of Meteorology and Seismology , Statistics Centre- Abu Dhabi

**Figure 2: Annual rainfall average - Abu Dhabi Emirates**



Source: Statistics Centre- Abu Dhabi

## Relative humidity

Coastal areas and islands of the Emirate of Abu Dhabi have high humidity compared with inland areas. Table (1.3) displays values of relative humidity, showing the impact of geographic location and season change. The highest average relative humidity recorded in winter during January in the islands of the Emirate ranging 72.0%, while the lowest value recorded in May in Al Ain ranging 26.3%. Statistical tables (7 - 10) in the Annex show absolute maximum and minimum relative humidity and its averages by month and region.

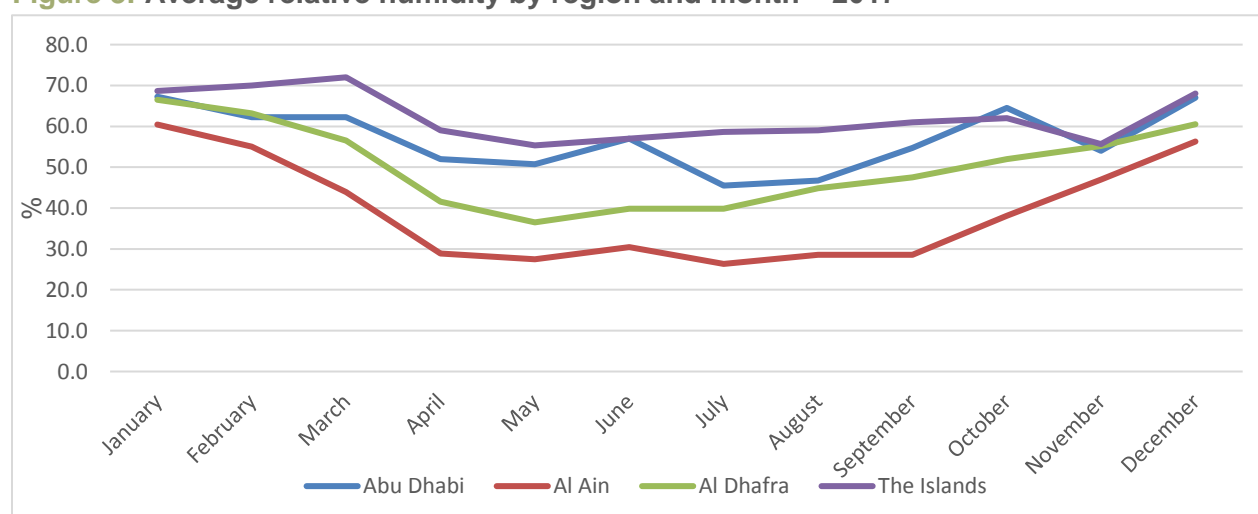
**Table 1.3: Average relative humidity by region and month - 2017**

(%)

Month	Abu Dhabi	Al Ain	Al Dhafra	The Islands
January	67.3	60.4	66.5	68.7
February	62.3	55.0	63.2	70.0
March	62.3	43.9	56.5	72.0
April	52.0	28.9	41.6	59.0
May	50.8	27.4	36.5	55.3
June	57.0	30.4	39.8	57.0
July	45.5	26.3	39.8	58.7
August	46.8	28.6	44.8	59.0
September	54.8	28.6	47.5	61.0
October	64.5	38.1	52.0	62.0
November	54.0	47.0	55.2	55.7
December	67.0	56.3	60.5	68.0

Source: National Centre of Meteorology and Seismology , Statistics Centre- Abu Dhabi

**Figure 3: Average relative humidity by region and month – 2017**



Source: Statistics Centre- Abu Dhabi



## Atmospheric Pressure

Table (1.4) reflects that the average atmospheric pressure in the Emirate of Abu Dhabi during summer season is low; the lowest value recorded in July 2017 at 996.7 Hectopascal in Al Dhafra region. Atmospheric pressure usually rises in winter, with the highest value recorded in December at 1,020.5 Hectopascal in the Islands.

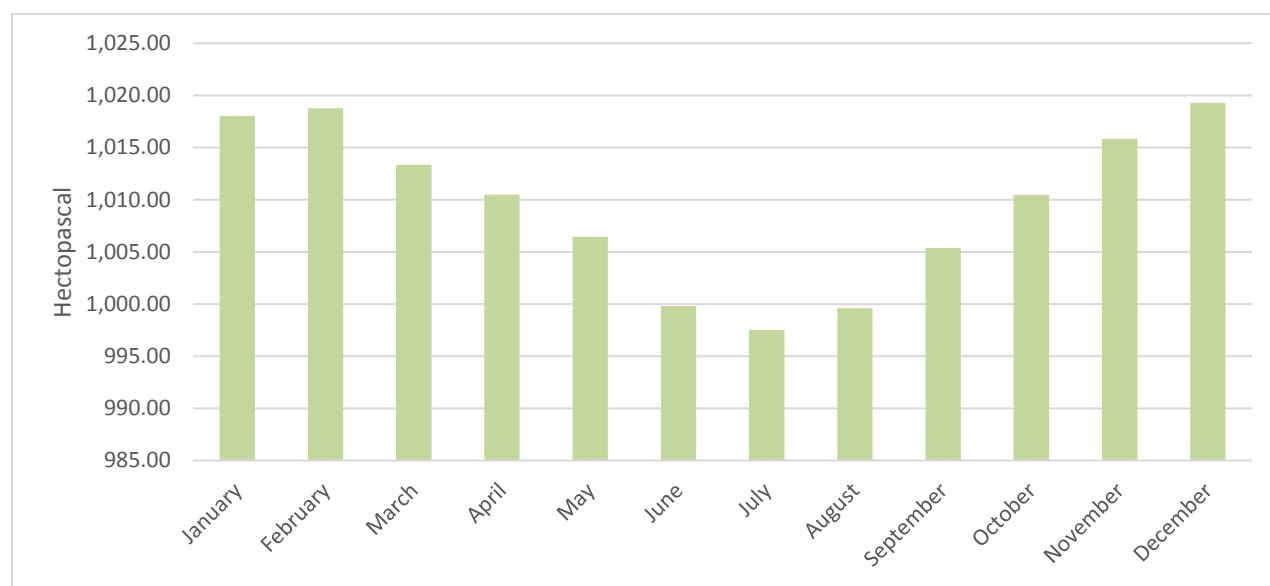
**Table 1.4: Average atmospheric pressure by region and month - 2017**

(Hectopascal)

Month	Abu Dhabi	Al Ain	Al Dhafra	The Islands
January	1017.4	1018.6	1017.2	1019.0
February	1018.5	1019.2	1017.7	1019.7
March	1013.3	1013.8	1012.3	1013.9
April	1010.3	1010.8	1009.7	1011.2
May	1006.1	1007.0	1005.7	1007.0
June	999.5	999.9	999.2	1000.7
July	997.3	998.2	996.7	997.9
August	999.2	1000.3	998.9	999.9
September	1005.0	1006.0	1004.7	1005.8
October	1010.0	1010.8	1009.8	1011.2
November	1015.3	1016.3	1015.2	1016.5
December	1019.0	1019.6	1018.1	1020.5

Source: National Centre of Meteorology and Seismology , Statistics Centre- Abu Dhabi

**Figure 4: Average atmospheric pressure for the Emirate by month - 2017**



Source: Statistics Centre- Abu Dhabi

## Wind Speed

The highest wind speed average in 2017 seen in the Islands of the Emirate in February at 20.3 knots, while the lowest average recorded in Al Ain in November at 9 knots, as shown in Table (1.5). Generally, there are two types of wind blowing over Abu Dhabi; the northern wind, which is dry and is mostly loaded with dust but it soothes air temperature and the eastern wind, which is short and very hot as it blows from the Empty Quarter, KSA. Non- seasonal southerly, south easterly, westerly and north-westerly winds blow occasionally across the Emirate. Average wind speed is obviously higher in Abu Dhabi Islands and the open areas of Al Dhafra region than in the city of Abu Dhabi and Al Ain region where high-rise buildings and mountains and the tall trees act as winds breaks. Statistical tables (11 - 14) in the Annex show the maximum values and averages of wind speed by month and region.

**Table 1.5: Average wind speed by region and month - 2017**

(Knot\*)

Month	Abu Dhabi	Al Ain	Al Dhafra	The Islands
January	11.8	10.0	11.3	15.3
February	15.3	12.7	16.0	20.3
March	14.8	12.9	15.0	18.0
April	12.8	11.7	13.8	17.0
May	12.8	11.4	12.5	14.7
June	13.0	11.4	14.2	17.3
July	13.8	12.4	12.5	14.0
August	14.0	11.7	12.3	15.0
September	11.8	10.9	10.7	12.0
October	10.5	9.3	10.2	13.7
November	11.3	9.0	10.7	14.3
December	11.4	10.2	9.8	16.7

Source: National Centre of Meteorology and Seismology , Statistics Centre- Abu Dhabi

\*Knot = 1.15 mph

## Solar Radiation

The sky of Abu Dhabi Emirate is cloudless almost all year around, which prolongs the hours of sunshine and increases the amount of solar radiation, which currently used to generate electrical energy from solar plants. During the 2017 summer, as shown in Table (1.6), the highest day length was 11.7 hours in Al Ain regions. During the winter of the same year, the day length in Abu Dhabi and Al Ain regions declined to 6.6 hours and 8.7 hours, respectively. Table (1.7) illustrates the daily average of solar radiation, where the highest value was about 7,450 W / m<sup>2</sup>/ h and it recorded in Al Ain City. Statistical tables (15 - 18) in the Annex show the maximum and minimum values of daily solar radiation intensity by month and region.

**Table 1.6: Average daily sunshine in Abu Dhabi and Al Ain regions by month - 2017**  
(Hours)

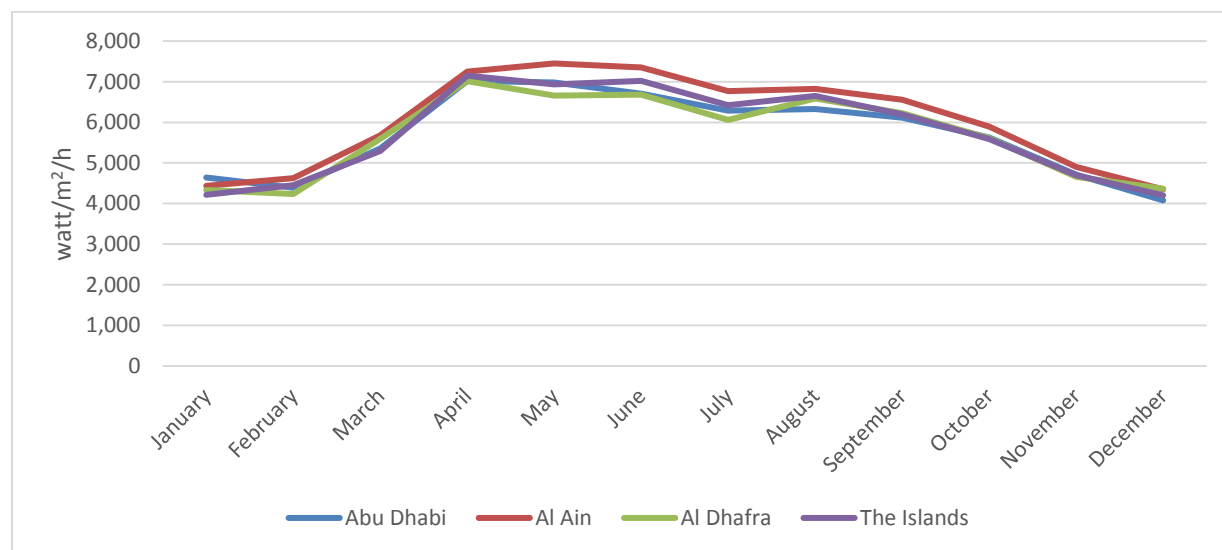
Month	Abu Dhabi	Al Ain
January	9.0	9.0
February	6.6	8.7
March	7.8	9.6
April	10.7	11.0
May	10.9	11.5
June	11.3	11.7
July	10.8	11.2
August	10.6	11.1
September	10.0	10.5
October	9.6	10.0
November	9.1	9.4
December	7.9	8.9

Source: National Centre of Meteorology and Seismology , Statistics Centre- Abu Dhabi

**Table 1.7: Average daily total solar radiation by region and month - 2017**(Watt/ m<sup>2</sup>/h)

Month	Abu Dhabi	Al Ain	Al Dhafra	The Islands
January	4,640	4,434	4,337	4,214
February	4,391	4,626	4,235	4,453
March	5,357	5,684	5,594	5,298
April	7,020	7,253	7,012	7,150
May	6,983	7,450	6,654	6,933
June	6,707	7,355	6,684	7,024
July	6,287	6,766	6,059	6,424
August	6,329	6,828	6,585	6,653
September	6,118	6,556	6,228	6,190
October	5,627	5,890	5,613	5,590
November	4,713	4,900	4,656	4,699
December	4,077	4,350	4,369	4,202

Source: National Centre of Meteorology and Seismology , Statistics Centre- Abu Dhabi

**Figure 5: Average daily total solar radiation by region and month - 2017**

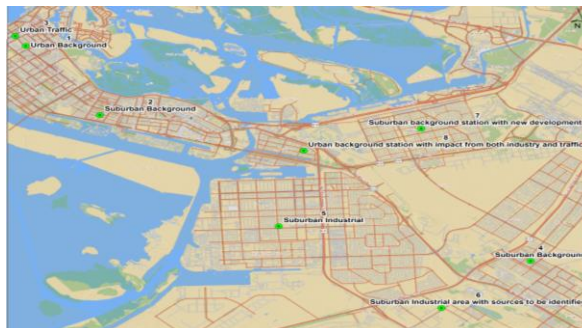
Source: Statistics Centre- Abu Dhabi

## Air Statistics

The Abu Dhabi government pays tireless efforts to improve air quality and to control harmful emissions; entities and organizations established to protect environment from the dangers of pollutants, such as reducing fuel combustion by generating electrical energy from renewable sources like sun and wind. The Government of Abu Dhabi Emirate has issued strict laws and legislations to help reduce air pollution and emissions and mitigate their impacts in order to maintain the health of those who live in the Emirate. In this regard, the Council of Ministers issued Decree No. 12 of 2006 on Regulation Concerning Protection of Air from Pollution which binding on both entities and individuals with pollutant types and maximum limits permitted.

Air pollution figures in the Emirate of Abu Dhabi are generally within the accepted range. However, the readings vary with different locations and activities. Stations were built on the roads to record and monitor rates of pollution caused by emissions from vehicle exhausts. Likewise, readings taken from oil and industrial activities, such as Mussafah industrial area, where pollution rates are higher than other regions of the Emirate.

### The location of Air Quality Monitoring stations



**Abu Dhabi**



**Al Ain**



**Al Dhafra**

## Air quality in urban areas

Indicators to measure air quality in urban areas deemed the most important indicators of sustainable development all over the world; the indicator aims at measuring the availability of healthy and safe environment for residents on the territory of the Emirate of Abu Dhabi. Table (2.1) shows that the average concentration of sulphur dioxide did not exceed the permitted limits as the maximum concentration in urban areas was 13.6 micrograms/cubic meters in 2017. The annual maximum allowed concentration is 60 micrograms/ cubic meter. This applies to other pollutants including lingering dust as readings were between 112.70 and 128.76 micrograms/cubic meters in 2017 where the maximum allowed rate is 150 micrograms/cubic meters .Statistical tables (19 - 22) in the Annex shows air quality indicators by type, region and the location of the station.

**Table 2.1: Annual average of air pollution indicators in urban areas by region and station - 2017**

( mcg/m<sup>3</sup>)

Region	Sulphur dioxide	Nitrogen dioxide	Ground level ozone	Particulate matter – PM10
<b>Abu Dhabi</b>				
Khalifa School	11.86	33.15	90.30	119.96
Bny Yas School	9.09	33.95	70.04	129.36
Khalifa City	10.71	32.14	83.18	120.05
AlMaqtaa	10.62	45.18	90.23	117.87
<b>Al Ain</b>				
Al Ain School	6.50	34.28	68.94	116.47
Suwaihan	9.12	16.82	92.25	114.38
Zakher	7.47	33.76	-	125.15
Al Tawya	7.14	33.27	86.86	112.70
<b>Al Dhafra</b>				
Bda Zayad	13.66	15.07	87.58	128.76

Source: Statistics Centre- Abu Dhabi



Concentration of carbon monoxide is measured in stations designed and placed in the roadsides to measure the amount of gas released from car exhausts, concentration of carbon monoxide reached in Hamdan Street in Abu Dhabi about 1.2 milligram/m<sup>3</sup>, followed by 1.0 milligram/m<sup>3</sup> in a Ruwais station located in Al Dhafra . Where in Al Ain region the annual average of carbon monoxide concentration did not exceed 0.7 milligram/m<sup>3</sup>.

**Table 2.2: Annual average of carbon monoxide concentration in ambient air by region**  
(Milligram/m<sup>3</sup>)

Station Location	2013	2014	2015	2016	2017
<b>Abu Dhabi</b>					
Road Side - Hamdan Street	0.9	1.1	1.8	1.4	1.2
Urban area- Al Maqtaa	0.5	0.7	0.8	0.6	0.8
<b>Al Ain</b>					
Road Side - Al Ain Street	1.2	0.9	1.0	0.6	0.7
Regional background - Alqoa	0.3	0.3	0.6	0.3	0.3
Urban area- Swihan	0.4	0.5	0.7	0.5	0.5
<b>Al Dhafra</b>					
Road side - E11 Road	0.4	0.3	-	-	-
Industrial - Ruwais	0.3	0.3	1.1	0.8	1.0

Source: Environment Agency - Abu Dhabi

## Noise

Table (2.3) shows the annual average noise levels in Abu Dhabi Emirates, where some regions in the Emirate recorded the same levels of noise such as urban regions. Annual average of noise level in 2017 in all Abu Dhabi Emirate regions (Abu Dhabi, Al Ain and Al Dhafra) 58.7, 61.4 and 50.0 Decibels respectively.

**Table 2.3: Annual average of noise Level by region**

(Decibels)

Station Location	2013	2014	2015	2016	2017
<b>Abu Dhabi</b>					
City Centre - Khadija School	67.5	-	-	-	-
Urban/ Residential - Khalifa School	58.4	42.8	29.1	49.0	49.3
Road Side - Hamdan Street	68.3	65.7	64.4	58.7	58.7
Urban/ Residential - Baniyas School	52.0	50.2	44.6	45.5	
Industrial - Mussafah	69.0	60.7	54.5	53.4	54.1
Industrial – Al Mafraq	60.2	53.0	53.3	50.6	47.6
Urban area- Khalifa city	60.1	49.7	45.1	45.8	45.3
Urban area- Al Maqtaa	53.7	49.3	47.5	48.5	49.6
<b>Al Ain</b>					
Urban/ Residential - Al Ain School	55.8	51.5	50.3	50.2	50.1
Road Side - Al Ain Street	64.1	62.0	61.4	61.3	61.4
Regional Background - Alqoa	54.4	51.5	51.3	47.6	41.6
City Centre- Zakher	54.9	49.1	51.3	49.2	
Urban area- Al Tawya	56.7	51.7	51.7	52.2	
<b>Al Dhafra</b>					
Urban/ Residential - Bida Zayed	53.8	45.5	39.2	-	50.0
Road side - E11 Road	65.8	61.1	-	47.8	
Industrial - Ruwais	55.6	53.2	51.6	39.1	37.3
City Centre - Gayathi School	61.3	54.8	51.5	-	-
Regional Background - Liwa Oasis	50.8	45.3	42.8	-	-
Regional Industrial Background– Habshan	59.7	55.1	54.9	50.9	45.7

Source: Environment Agency - Abu Dhabi

## Air pollutant emissions - oil and gas sector

Total air pollutant emissions sum up together the emissions of sulphur dioxide, nitrogen oxides and volatile organic compounds. Table (2.4) and Figure (6) decrease that the total emissions from oil and gas sector in 2017 decreases by 1.83% compared with 2016. Total emissions were 371,544 tons. The table shows stability in emissions per capita in 2017 same as 2016, which recorded 0.13 tons. Statistical tables (23 - 25) show the amount of emissions by type of pollutant and by sectors in Abu Dhabi National Oil Company.

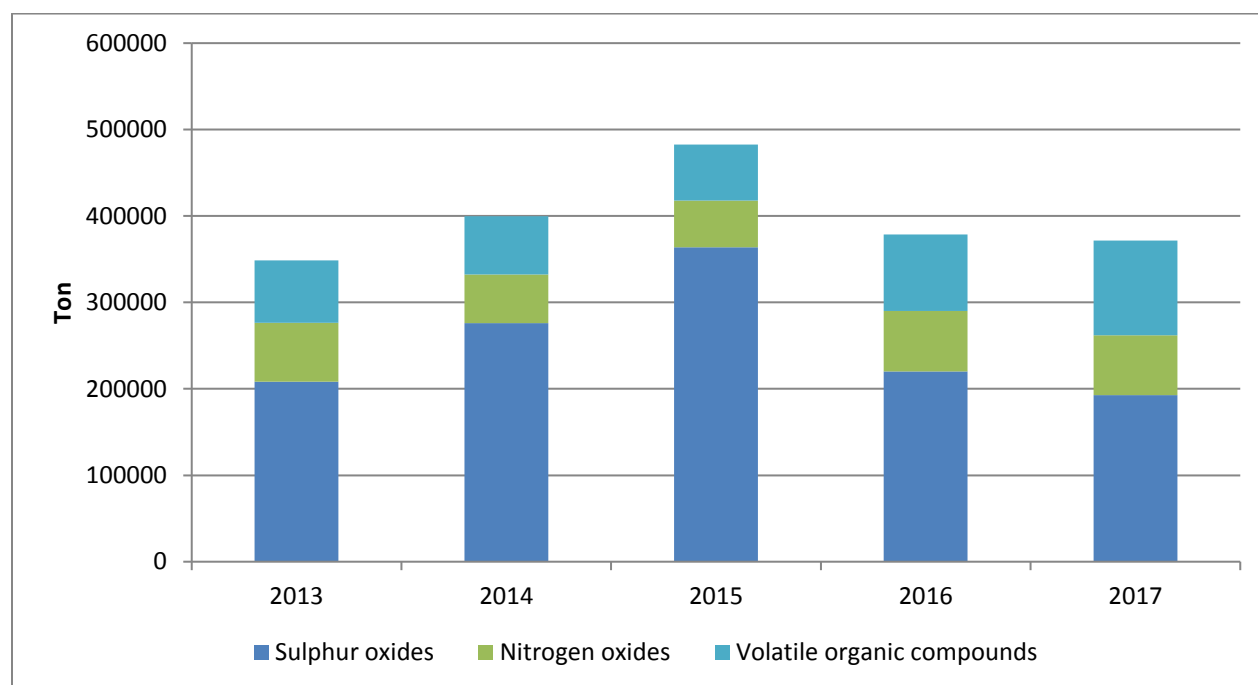
**Table 2.4: Air pollutant total emissions – oil and gas sector**

(Tons)

Pollutant	2013	2014	2015	2016	2017
<b>Total</b>	<b>448,392</b>	<b>399,676</b>	<b>482,484</b>	<b>378,456</b>	<b>371,544</b>
Sulphur dioxide (SO <sub>2</sub> )	322,798	276,206	363,692	220,249	192,931
Nitrogen oxides (NO <sub>x</sub> )	56,708	56,116	54,335	69,716	69,175
Volatile organic compounds (VOC)	68,886	67,355	64,457	88,491	109,438

Source: Abu Dhabi National Oil Company - ADNOC

**Figure 6: Air pollutant total emissions - oil and gas sector**



Source: Abu Dhabi National Oil Company, Statistics Centre- Abu Dhabi

**Table 2.5: Per capita air pollutant total emissions - oil and gas sector**

(Tons)

Pollutant	2011	2012	2013	2014	2015	2016	2017
<b>Total</b>	<b>0.16</b>	<b>0.16</b>	<b>0.14</b>	<b>0.17</b>	<b>0.17</b>	<b>0.13</b>	<b>0.13</b>
Sulphur Dioxide (SO <sub>2</sub> )	0.10	0.10	0.08	0.12	0.13	0.08	0.07
Nitrogen Oxides (NO <sub>x</sub> )	0.03	0.03	0.03	0.02	0.02	0.02	0.02
Volatile Organic Compounds (VOC)	0.03	0.03	0.03	0.03	0.02	0.03	0.04

Source: Statistics Centre- Abu Dhabi

**Carbon Dioxide Emissions – oil and gas sector**

Table (2.6) illustrates the change in carbon dioxide emissions during the period from 2010 to 2017 of oil and gas sector. Gas emissions in 2017 totalled 35.8 million tons, while the emission per capita from oil and gas sector was 12.3 million tons in the same year. Statistical tables (26 - 27) display carbon dioxide emissions and per capita carbon dioxide emissions by sectors in Abu Dhabi National Oil Company.

**Table 2.6: Carbon dioxide emissions - oil and gas sector**

Item	2012	2013	2014	2015	2016	2017
Carbon dioxide emissions (Million Tons)	26.6	26.1	29.4	33.70	34.12	35.81
Per capita carbon dioxide emissions (Tons)*	12.2	11.2	11.3	12.1	11.7	12.3

Source: Abu Dhabi National Oil Company – ADNOC, Statistics Centre- Abu Dhabi

## Water statistics

### Non-conventional water resources

The amount of non-conventional water resources including the total amount of consumed desalinated water and the reused sewage water in 2017 totaled 1,275.7 MCM, and decrease of 0.4% compared with 2016.

**Table 3.1: Total amount of used waster from non-conventional resources by type**

(Million cubic meter)

Type	2012	2013	2014	2015	2016	2017
<b>Total</b>	<b>1,209.3</b>	<b>1,252.5</b>	<b>1,341.6</b>	<b>1,319.5</b>	<b>1,281.4</b>	<b>1,275.7</b>
Desalinated water consumption	1,070.3	1,098.7	1,149.6	1,148.5	1,114.9	1,101.3
Quantity of treated wastewater reuse	139.0	153.8	192.0	171.0	166.5	174.4

Source: Statistics Centre- Abu Dhabi

### Wastewater

Wastewater treatment is one way of utilizing water and diversifying its sources, especially when water resources are scarce. In 2017, the quantity of wastewater inflow totalled 320 MCM, and decrease of 4.7% than 2016. Approximately 97% of the wastewater quantity treated, while the quantity of the reused treated wastewater accounted to 56%. Water treatment plants capacity in 2017 totalled 473 MCM.

With the increasing demand on wastewater treatment and reuse in the Emirate of Abu Dhabi, the environmental monitoring level and health standards of wastewater treatment, reuse or disposal also increased. Several parameters examined in the process of wastewater treatment, such as the daily amount of dry sludge, the concentrations of biochemical oxygen demand and suspended solids.

In 2017 daily production of sludge decreased by 20.9% from 2016, also the average daily concentration of BOD increased by 22.2% from 2016 as shown in table (3.4) .

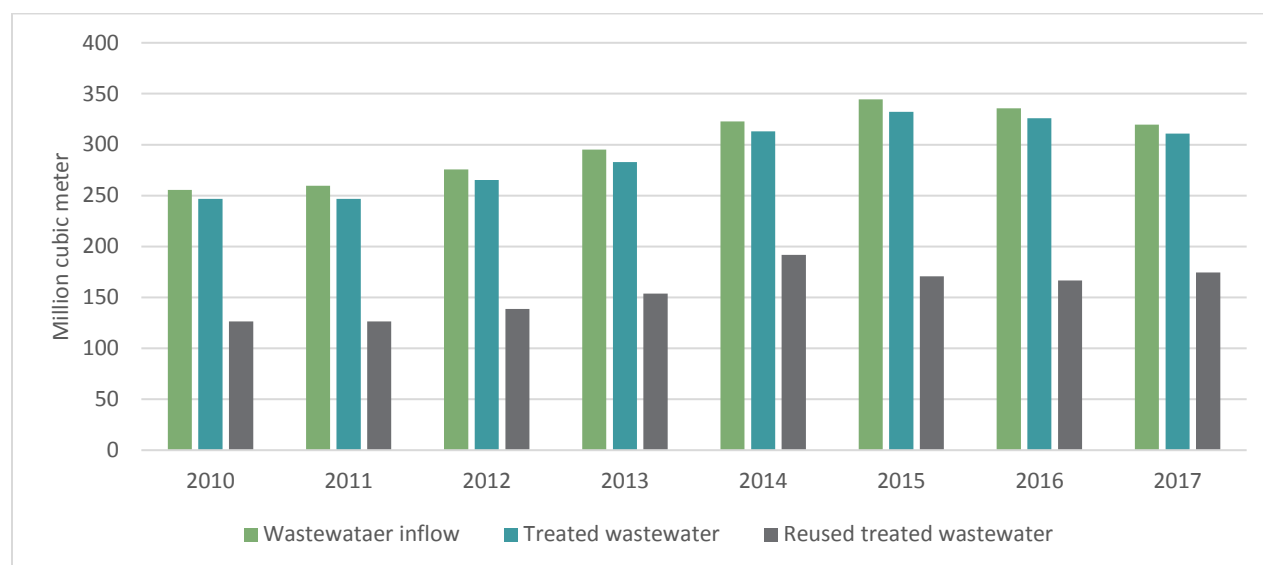
**Table 3.2: Wastewater quantity**

(Million cubic meter)

Item	2012	2013	2014	2015	2016	2017
Wastewater inflow	276	295	322	344	336	320
Treated wastewater	265	283	312	332	326	311
Treated wastewater reuse	139	154	192	171	167	174

Source: Abu Dhabi Sewerage Services Company

**Figure 7: Quantity of wastewater**



Source: Abu Dhabi Sewerage Services Company

**Table 3.3: Total wastewater treatment plants capacity**

(Million cubic meter)

Item	2012	2013	2014	2015	2016	2017
Total wastewater treatment plants capacity	405.2	470.5	466.8	470.5	474.7	473.2
Total conventional wastewater treatment plants capacity	404.6	469.3	461.6	465.3	469.9	468.7
Total non-conventional wastewater treatment plants capacity	0.6	1.2	5.2	5.2	4.8	4.5

Source: Abu Dhabi Sewerage Services Company

**Table 3.4: Wastewater quality**

Region	2011	2012	2013	2014	2015	2016	2017
Average daily amount of dry sludge (ton/day)	149.63	164.7	119.2	134.4	80.1	128.6	101.7
Average daily concentration of BOD (kg/day)	107.70	170.2	128.6	157.1	97.1	142.7	174.4
Average daily concentration of suspended solids (ton/day)	103.11	148.4	564.4	-	128.5	139.7	155.1

Source: Abu Dhabi Sewerage Services Company



## Marine water quality

The table below presents readings of Abu Dhabi city marine waters quality in terms of temperature, salinity, dissolved oxygen, in addition to nutrients, such as phosphate, nitrates, and others. The readings been taken at monitoring stations at certain depths in 22 regions.

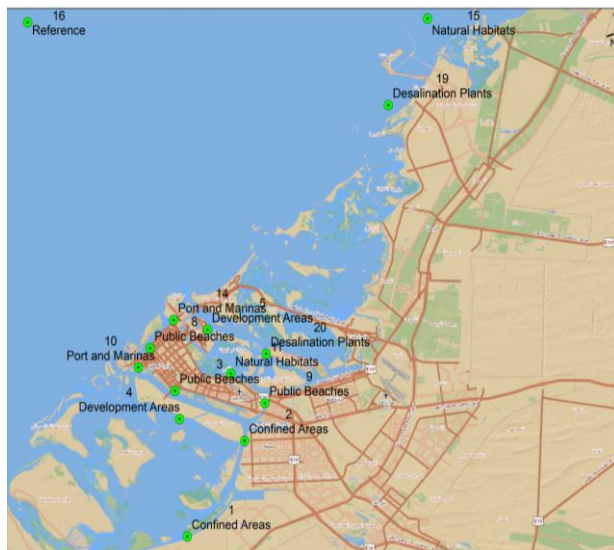
The waters of the Emirate of Abu Dhabi are fairly nutrient-rich. Nutrient inputs into the sea from dust to sand storms, sewage discharges and land runoff near-shore areas. Examples of important nutrients in the seawater essential for the life and growth of plants and phytoplankton include nitrites, nitrates, phosphates, and silicates. Generally, nutrients level rises in closed areas where it is difficult for water renewal to occur or in industrial zones, which have intensive human activities.

The salinity in the Arabian Gulf is relatively high because of combined influence of restricted exchange of Gulf waters with the open ocean, the high evaporation rates caused by high temperatures, and the desalination industry. The salinity in marine waters in the city of Abu Dhabi in 2017 ranges between 40.3 – 45.6 Practical Salinity Unit (psu).

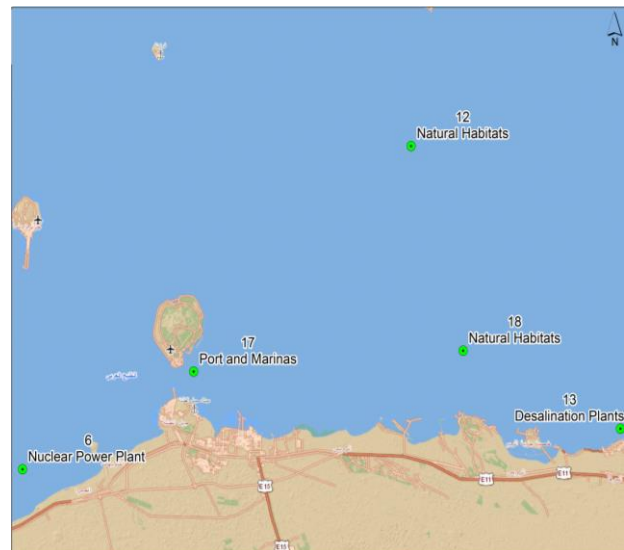
Regarding dissolved oxygen, most of the readings taken are between 4.7 – 5.3 mg/litre and these are ideal levels for supporting the life of marine living organisms.

Table (3.5) and (3.6) contains the physical and chemical measurements along with nutrients concentration of the marine waters of Abu Dhabi city

## Marine water quality monitoring location



AbuDhabi



AlDhafra

**Table 3.5: Marine waters quality in the city Abu Dhabi - 2017**

Type	Name	Secchi Depth	Acidity	Salinity	Temperature	Dissolved Oxygen	Biochemical Oxygen Demand (BOD)
		(m)	(pH)	(psu)	(°C)	(mg/L)	(mg/L)
Public Beaches	Al Bateen Beach	2.11	8.07	43.67	28.07	4.89	2.85
	Beach Corniche	2.12	8.04	42.19	28.27	5.1	2.78
	Fairmont Beach	1.98	8.04	45.57	29.05	4.68	3.28
Natural Habitats	(Corals (Al Yasat	4.04	8.05	43.98	28.6	4.93	3.46
	Ras Ghanadah - Corals	3.61	8.06	42.73	28.34	5.12	3.07
	Sea grass (Al (Basam	3.05	8.06	44.53	27.88	5.06	3.35
	Mangroves (Butinah)	2.74	8.08	43.03	28.55	5.02	3.25
Port and Marinas	Intercontinental Jetty	2.16	8.04	42.71	28.24	4.83	3.91
	Port Mina Zayed	2.03	8.01	42.21	28.41	4.96	2.89
	Ruwais	5.56	8.05	44.22	28.86	4.89	3.55
Desalination Plants	Mirfah	2.29	8.07	44.72	28.87	5.26	3.36
	Taweela	2.18	8.06	43.72	29.56	5.14	3.16
	Um Al Nar	2.95	8.01	45.31	29.64	4.68	3.25
Nuclear Power Plant	Barakah	6.25	8.04	43.97	28.76	4.92	3.18
Development Areas	Al Hudayriat Island	2.29	8.03	43.6	27.97	4.71	3.07
	Al Reem Island	2.01	8.01	43.13	28.66	4.94	3.17
Reference	Reference	5.87	8.07	40.32	28.35	5.02	2.79

Source: Environment Agency – Abu Dhabi

**Table 3.6: Concentration of natural nutrients in marine waters - 2017**

(Microgram/liter)

Type	Name	Phosph ate PO <sub>4</sub>	Silicate SiO <sub>3</sub>	Nitrate NO <sub>3</sub>	Nitrite NO <sub>2</sub>	Ammo nia NH <sub>3</sub>	Chlorophyll a C <sub>55</sub> H <sub>72</sub> MgN <sub>4</sub> O <sub>5</sub>
Public Beaches	Al Bateen Beach	154.67	450.67	10	88	25.33	1.29
	Corniche Beach	74	360.67	2	87.33	8.67	0.56
	Fairmont Beach	107.33	658	20	170.67	26.67	0.81
Natural Habitats	Corals (Al Yasat)	36	192	-	54	12.67	0.7
	Ras Ghanadah - Corals	82	283.33	2	64	-	0.23
	Sea grass (Al Basam)	80	260	5	146.67	36.67	0.49
	Mangroves (Butinah)	60	190	5	51.67	18	0.29
Port and Marinas	Intercontinental Jetty	115.33	1276	10	162.67	-	0.3
	Port Mina Zayed	106.67	577.33	8	124.67	11.67	0.29
	Ruwais	78	238	-	150	11.67	0.28
Desalination Plants	Mirfah	50	381.67	5	190	12	0.18
	Taweela	76.67	274	2	94	32.67	0.93
	Um Al Nar	101.33	496.67	4	172	16.67	0.51
Nuclear Power Plant	Barakah	60	226	-	230	18.67	0.55
Development Areas	Al Hudayriat Island	117.33	340	4	70.67	8	0.36
	Al Reem Island	80.67	330	-	173.33	6	0.22
Reference	Reference	88	265.33	4	28.67	12.67	0.36

Source: Environment Agency – Abu Dhabi

## Health and safety statistics

Maintaining public health is the core base in improving living standards in developed countries, therefore governments establish regulatory bodies and institutions that work to ensure the safety of food, and in return they sought to improve medical and therapeutic services to ensure the preservation of public health. Food safety deals with food preparation and storage. It aims at preventing food poisoning and foodborne illnesses and the preparation of plans and working methods to solve problems facing various business sectors in the Emirate. It also aims at providing secure working environments through identifying and controlling risks and minimizing the possibility of accidents occurrence.

### Food Poisoning and foodborne illnesses

Food poisoning is defined as an illness caused by consuming foods or drinks contaminated with bacteria, viruses, or poisons, with different severity levels that may sometimes cause death. Symptoms of food poisoning usually include nausea, vomiting, and abdominal cramps, diarrhoea, fever, shivering, and others. Such symptoms may affect one person or a group of people who have had the same contaminated foods or drinks. As a result of the increasing number of problems related to food safety and consumer worries, governments exert huge efforts to improve food safety and human health.

In 2017, there were 2,122 cases of food poisoning and foodborne illnesses Caused by eating food or drinks contaminated with bacteria and viruses. Typhoid poisoning claimed 188 cases or 8.9% of the total cases of poisoning in 2017.

**Table 4.1: Number of food poisoning and foodborne illnesses by type**

Type	2011	2012	2013	2014	2015	2016	2017
Total	<b>1,356</b>	<b>2,107</b>	<b>1,949</b>	<b>955</b>	<b>1,895</b>	<b>2,263</b>	<b>2,122</b>
Other food poisoning	667	1,147	1,237	360	1,233	1,392	1,526
Typhoid fever	394	443	248	222	275	251	188
Viral hepatitis A	138	279	271	224	173	318	189
Giardia lamblia	82	103	94	100	139	184	128
Brucellosis	75	135	99	49	75	118	91

Source: Health Authority - Abu Dhabi

## Waste statistics

Abu Dhabi government ensures applying the proper and sustainable use of natural resources and encourages decreasing the production of waste from its sources, in addition to monitoring all activities related to waste management in order to overcome the environmental and economic damages resulted from improper disposal of waste. Improper disposal of waste may result in polluting ground and seawater and harming both coastal and urban areas. Even if waste is disposed through the proper means of imbedding, it requires large areas of land, which may not be available for many countries.

Consequently, an increasing need for safe and effective waste management system emerges along with waste recycling that conserves the environment and contributes economic benefits to society and its economic sectors. The total amount of non-hazardous solid waste in 2017 was about 9.5 million tons.

### Solid Waste

The total amount of the non-hazardous solid waste generated daily in 2017 was about 25.9 thousand tons. The commercial and industrial activities accounted for 33% of total waste generated, whereas the amount of solid municipal waste reached about 1.4 million tons of which 67% was in the Abu Dhabi region.

**Table 5.1: Non-hazardous solid waste generation by region and source activity 2017**

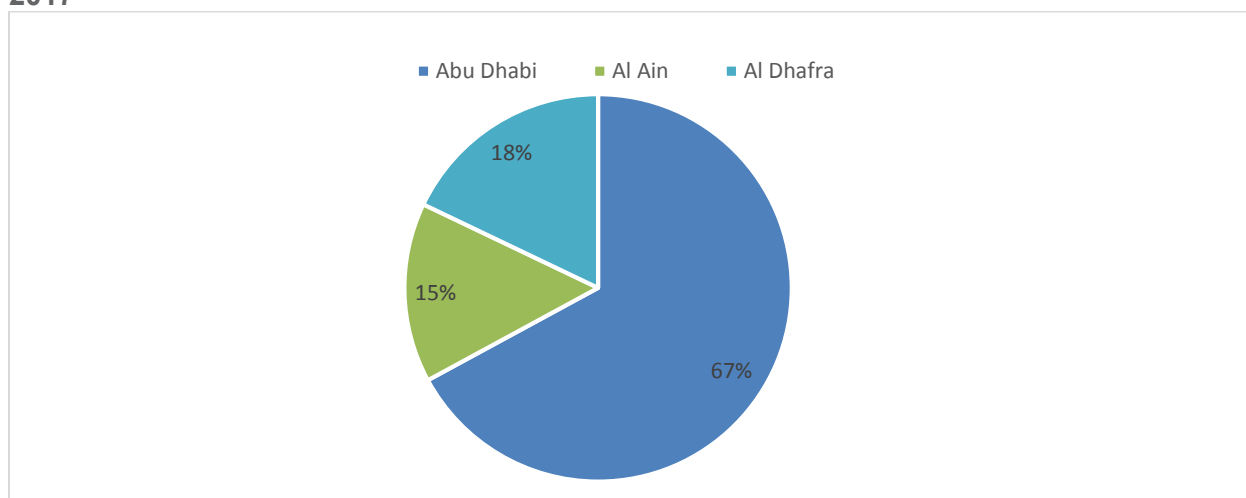
(Tons)

Source	Total	Abu Dhabi	Al Ain	Al Dhafra
<b>Grand total</b>	<b>9,477,037</b>	<b>6,358,031</b>	<b>1,422,333</b>	<b>1,696,672</b>
<b>Daily average</b>	25,964	17,419	3,897	4,648
Construction and demolition	3,959,319	2,243,791	526,457	1,189,071
Commercial and industrial Waste	3,169,212	3,050,335	50,683	68,195
Agricultural Waste	933,505	65,744	556,456	311,305
Municipal Solid Waste	1,372,140	955,302	288,738	128,101
Other *	42,861	42,861	-	-

Source: The Centre of Waste Management - Abu Dhabi

\* Include solid waste from sewage treatment and oil and gas waste

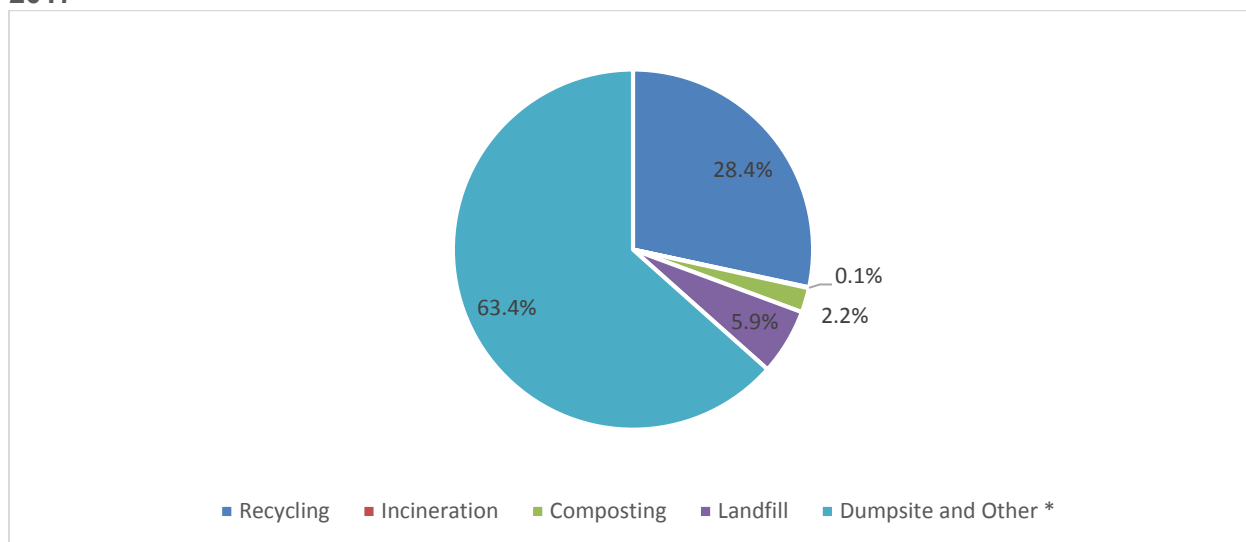
**Figure 8: Percentage distribution of non-hazardous solid waste generation by region - 2017**



Source: Statistics Centre - Abu Dhabi

Due to the development witnessed by the Emirate of Abu Dhabi in terms of waste treatment, recycled waste reached 28% in 2017, while waste disposed by dumpsite and other methods reached 63.4% of the total waste generated in Abu Dhabi emirate. As shown in Figure 9.

**Figure 9: Percentage distribution of non-hazardous solid waste by disposal method – 2017**



Source: Statistics Centre - Abu Dhabi



## Biodiversity Statistics

Biodiversity supports life on earth since people ultimately depend on biodiversity products and services on a daily basis, such as clean water, clean air and food products, as well as many other products such as wood products. Biodiversity is also essential in the medical field; medicinal plants still considered the most common medication tools in traditional medicine. On the other hand, diversity of plants, animals and microbes is an integral part of bio-medical research and pharmacology. Thus, loss in biodiversity means that we are losing, before discovery, many health benefits that ecosystems can provide. Ecotourism is another key service provided by biodiversity, in addition to the important role, that biodiversity play in preserving local heritage and symbols such as the connection between falcons and falconry.

### Known and threatened species

Table (6.1) shows the total number of species recorded in the Emirate of Abu Dhabi, in 2017 number of known species registered excluding invertebrates reached up to 993 terrestrial and marine species compared with 988 type in 2015, . Studies indicate that there are more than 2,000 recorded species of arthropods, the majority are insects. Records on vascular plants in the Emirate show that there are about 436 recorded species.

The table also shows the total number of threatened species including the three threatened categories of the IUCN Red List: Critically endangered (CR), Endangered (EN), and Vulnerable (VU), in addition to the number of species listed within these categories according to the local Red List of the Emirate of Abu Dhabi, if any.

**Table 6.1: Total known and threatened species \***

Class	Total number of known species				Total number of threatened species			
	2014	2015	2016	2017	2014	2015	2016	2017
Fish	540	456	456	456	11	13	13	13
Birds**	427	427	427	427	31	15	15	15
Reptiles**	51	52	57	57	5	4	7	7
Amphibians	2	2	2	2	0	0	0	0
Mammals**	54	51	51	51	16	6	6	6
<b>Total</b>	<b>1,074</b>	<b>988</b>	<b>993</b>	<b>993</b>	<b>63</b>	<b>38</b>	<b>41</b>	<b>41</b>
Arthropods (terrestrial)	>2,000	2,219	2,219	2,313	-	-	-	4
Vascular Plants**	432	432	436	436	8	8	8	8

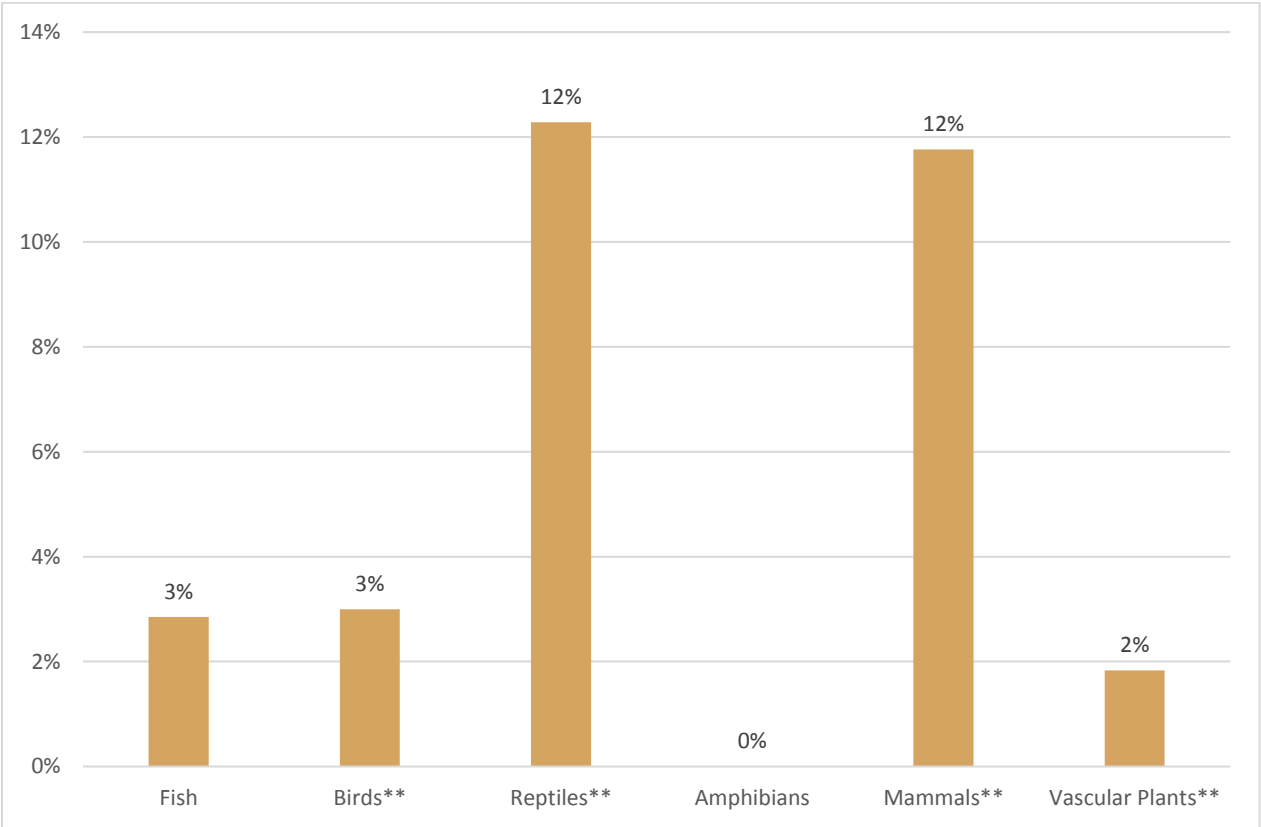
Source: Environment Authority – Abu Dhabi, Statistics Centre - Abu Dhabi

\* Include species classified under global and/or local red list threatened criteria.

\*\* Includes terrestrial and marine species.

Figure 10, shows the percentage distribution of the total threatened species from the total known species. The endangered species falls within the threatened categories of the global Red List, and other species within the threatened categories of the local Red List. The rate of threaten reptiles increased in 2017 by 75% from 2015. While each of birds and mammals, threaten species rates 2015 and 2017 about 3.5% and 11.8% of the total known species of each class, respectively.

**Figure 10: Percentage of threatened species from total known species -2017**



Source: Statistics Centre - Abu Dhabi

## Statistical Tables

**Table 1 : Air temperature by month, Abu Dhabi - 2017**

(Degree Celsius)

Month	Monthly average	Absolute minimum	Average minimum	Absolute maximum	Average maximum
January	20.2	7.6	15.2	29.3	25.1
February	20.0	5.8	15.7	33.3	24.3
March	24.3	8.7	19.2	38.8	29.5
April	29.1	14.3	22.5	44.1	35.7
May	32.2	16.5	25.5	47.1	38.9
June	34.2	20.0	28.0	49.2	40.4
July	37.9	23.4	31.3	49.8	44.6
August	37.2	22.6	30.3	49.1	44.1
September	34.1	21.2	27.2	46.0	41.0
October	30.3	16.4	24.4	43.4	36.3
November	25.4	11.1	19.9	35.7	31.0
December	20.5	9.9	15.6	30.6	25.5

Source: National Centre of Meteorology and Seismology , Statistics Centre- Abu Dhabi

**Table 2 : Air temperature by month, Al Ain - 2017**

(Degree Celsius)

Month	Monthly average	Absolute minimum	Average minimum	Absolute maximum	Average maximum
January	19.6	7.9	13.8	31.3	25.4
February	19.2	2.0	13.9	33.0	24.5
March	25.3	11.1	18.9	39.5	31.6
April	30.7	14.8	23.0	44.4	38.3
May	33.7	19.0	26.1	49.1	41.4
June	36.8	22.9	28.6	50.4	44.9
July	38.7	26.7	32.0	51.3	45.3
August	37.3	22.5	30.5	49.8	44.1
September	34.8	21.8	27.9	47.5	41.7
October	30.8	18.5	23.5	44.7	38.0
November	24.4	13.0	18.2	37.8	30.5
December	19.9	5.6	13.7	32.7	26.1

Source: National Centre of Meteorology and Seismology, Statistics Centre- Abu Dhabi

**Table 3 : Air temperature by month, Al Dhafra - 2017**

(Degree Celsius)

Month	Monthly average	Absolute minimum	Average minimum	Absolute maximum	Average maximum
January	19.4	5.8	13.0	31.7	25.9
February	19.3	3.7	13.8	33.8	24.8
March	25.0	8.6	18.5	40.9	31.5
April	30.1	12.7	22.0	44.3	38.2
May	33.7	17.6	25.7	48.8	41.7
June	35.9	20.2	27.8	50.8	44.1
July	38.5	24.7	31.3	50.2	45.8
August	37.2	22.8	30.1	49.5	44.4
September	34.5	21.0	27.1	46.7	42.0
October	30.8	16.9	23.6	43.4	38.0
November	24.9	11.4	18.5	36.4	31.3
December	20.1	5.0	13.2	31.9	26.9

Source: National Centre of Meteorology and Seismology, Statistics Centre- Abu Dhabi

**Table 4 : Air temperature by month, The Islands - 2017**

(Degree Celsius)

Month	Monthly average	Absolute minimum	Average minimum	Absolute maximum	Average maximum
January	20.0	10.7	16.5	29.8	23.5
February	18.8	9.9	15.8	30.1	21.7
March	22.9	10.9	19.0	38.4	26.8
April	28.5	17.3	23.3	41.9	33.8
May	32.7	23.8	27.1	45.3	38.2
June	34.1	23.1	29.0	45.5	39.1
July	36.8	27.6	31.3	48.4	42.3
August	37.0	26.4	31.8	47.0	42.1
September	34.4	25.1	29.5	45.0	39.3
October	31.3	22.0	27.2	40.0	35.4
November	26.4	16.8	22.6	35.7	30.2
December	20.9	11.8	17.6	28.8	24.2

Source: National Centre of Meteorology and Seismology , Statistics Centre- Abu Dhabi

**Table 5 : Rainfall in Abu Dhabi and Al Ain regions by month - 2017**

(Millimetres)

Month	Abu Dhabi		Al Ain	
	Heaviest fall in one day	Total for month	Heaviest fall in one day	Total for month
January	5.2	5.4	44.6	162.7
February	14.2	47.9	28.2	126.9
March	31.0	166.0	84.2	455.6
April	0.0	0.0	0.1	0.1
May	0.0	0.0	9.7	10.3
June	0.0	0.0	0.0	0.0
July	0.6	0.6	12.5	46.9
August	0.5	0.5	12.2	29.2
September	0.0	0.0	0.7	0.9
October	0.0	0.0	0.0	0.0
November	0.0	0.0	0.0	0.0
December	1.4	6.8	45.2	115.8

Source: National Centre of Meteorology and Seismology , Statistics Centre- Abu Dhabi

**Table 6: Rainfall in Al Dhafra and The Islands by month - 2017**

(Millimetres )

Month	Al Dhafra		The Islands	
	Heaviest fall in one day	Total for month	Heaviest fall in one day	Total for month
January	11.6	20.0	2.4	2.4
February	20.4	68.6	23.6	79.4
March	31.0	158.2	50.0	241.0
April	0.0	0.0	0.0	0.0
May	0.8	1.2	0.0	0.0
June	0.0	0.0	0.0	0.0
July	3.2	9.2	0.4	0.4
August	1.8	3.8	0.0	0.0
September	28.9	43.1	0.0	0.0
October	0.0	0.0	0.0	0.0
November	0.0	0.0	0.0	0.0
December	23.8	26.0	2.6	3.0

Source: National Centre of Meteorology and Seismology , Statistics Centre- Abu Dhabi

**Table 7: Relative humidity by month, Abu Dhabi - 2017**

(%)

Month	Monthly average	Absolute minimum	Average minimum	Absolute maximum	Average maximum
January	67.3	21.0	44.5	100.0	86.0
February	62.3	11.0	41.0	100.0	81.8
March	62.3	11.0	36.5	100.0	82.8
April	52.0	3.0	24.3	100.0	76.8
May	50.8	2.0	24.0	100.0	74.5
June	57.0	4.0	30.0	100.0	82.3
July	45.5	5.0	18.5	95.0	70.3
August	46.8	4.0	17.8	97.0	74.5
September	54.8	4.0	21.5	100.0	82.5
October	64.5	5.0	32.3	100.0	90.5
November	54.0	8.0	31.0	100.0	76.0
December	67.0	13.0	43.8	100.0	84.2

Source: National Centre of Meteorology and Seismology , Statistics Centre- Abu Dhabi

**Table 8: Relative humidity by month, Al Ain - 2017**

(%)

Month	Monthly average	Absolute minimum	Average minimum	Absolute maximum	Average maximum
January	60.4	2.0	33.7	100.0	86.9
February	55.0	2.0	31.2	100.0	78.9
March	43.9	3.0	22.0	100.0	70.1
April	28.9	3.0	11.3	100.0	53.2
May	27.4	1.0	10.7	100.0	51.0
June	30.4	2.0	8.9	100.0	60.8
July	26.3	2.0	12.9	95.0	45.1
August	28.6	2.0	12.6	96.0	49.4
September	28.6	2.0	12.1	99.0	51.0
October	38.1	3.0	13.1	100.0	70.1
November	47.0	7.0	24.7	100.0	71.9
December	56.3	4.0	30.5	100.0	82.5

Source: National Centre of Meteorology and Seismology , Statistics Centre- Abu Dhabi

**Table 9 : Relative humidity by month, Al Dhafra - 2017**

(%)

Month	Monthly average	Absolute minimum	Average minimum	Absolute maximum	Average maximum
January	66.5	15.0	39.7	100.0	91.0
February	63.2	13.0	40.0	100.0	86.2
March	56.5	8.0	31.8	100.0	82.5
April	41.6	2.0	19.2	100.0	69.8
May	36.5	2.0	17.2	100.0	62.5
June	39.8	1.0	18.2	100.0	68.7
July	39.8	1.0	18.2	100.0	65.7
August	44.8	3.0	20.8	100.0	71.5
September	47.5	2.0	20.7	100.0	75.3
October	52.0	5.0	23.2	100.0	82.7
November	55.2	10.0	31.8	100.0	79.2
December	60.5	7.0	32.3	100.0	88.0

Source: National Centre of Meteorology and Seismology , Statistics Centre- Abu Dhabi

**Table 10 : Relative humidity by month, The Islands - 2017**

(%)

Month	Monthly average	Absolute minimum	Average minimum	Absolute maximum	Average maximum
January	68.7	23.0	49.3	100.0	84.7
February	70.0	25.0	52.0	100.0	83.7
March	72.0	17.0	47.3	100.0	89.7
April	59.0	6.0	29.3	100.0	82.7
May	55.3	7.0	23.7	99.0	81.7
June	57.0	8.0	28.7	98.0	80.7
July	58.7	6.0	25.7	96.0	83.7
August	59.0	12.0	27.0	96.0	82.3
September	61.0	7.0	30.7	100.0	82.3
October	62.0	10.0	38.0	97.0	80.0
November	55.7	19.0	38.7	93.0	72.0
December	68.0	19.0	49.0	100.0	83.3

Source: National Centre of Meteorology and Seismology , Statistics Centre- Abu Dhabi

**Table 11 : Wind speed by month, Abu Dhabi - 2017**

(Knot\*)

Month	Average	Absolute maximum	Average maximum
January	11.8	35.0	29.5
February	15.3	59.0	29.5
March	14.8	73.0	31.3
April	12.8	38.0	26.3
May	12.8	42.0	25.3
June	13.0	44.0	25.5
July	13.8	47.0	27.5
August	14.0	43.0	28.0
September	11.8	36.0	25.8
October	10.5	37.0	22.5
November	11.3	42.0	23.0
December	11.4	50.0	23.2

Source: National Centre of Meteorology and Seismology , Statistics Centre- Abu Dhabi

\*Knot = 1.15 mph

**Table 12: Wind speed by month, Al Ain - 2017**

(Knot\*)

Month	Average	Absolute maximum	Average maximum
January	10.0	39.0	28.6
February	12.7	81.0	27.3
March	12.9	84.0	29.9
April	11.7	71.0	27.2
May	11.4	72.0	27.1
June	11.4	54.0	26.8
July	12.4	64.0	29.7
August	11.7	70.0	27.9
September	10.9	54.0	26.6
October	9.3	52.0	23.4
November	9.0	54.0	22.2
December	10.2	51.0	22.4

Source: National Centre of Meteorology and Seismology , Statistics Centre- Abu Dhabi

\*Knot = 1.15 mph



**Table 13: Wind speed by month, Al Dhafra - 2017**

(Knot\*)

Month	Average	Absolute maximum	Average maximum
January	11.3	30.0	37.8
February	16.0	77.0	31.2
March	15.0	102.0	32.5
April	13.8	58.0	29.2
May	12.5	58.0	29.2
June	14.2	53.0	30.2
July	12.5	52.0	29.0
August	12.3	49.0	27.7
September	10.7	54.0	24.7
October	10.2	39.0	23.8
November	10.7	50.0	23.5
December	9.8	41.0	21.5

Source: National Centre of Meteorology and Seismology , Statistics Centre- Abu Dhabi

\*Knot = 1.15 mph

**Table 14: Wind speed by month, The Islands - 2017**

(Knot\*)

Month	Average	Absolute maximum	Average maximum
January	15.3	46.0	33.0
February	20.3	66.0	34.7
March	18.0	73.0	35.0
April	17.0	55.0	31.3
May	14.7	43.0	28.0
June	17.3	56.0	31.0
July	14.0	45.0	26.7
August	15.0	39.0	27.7
September	12.0	38.0	23.7
October	13.7	42.0	24.3
November	14.3	49.0	25.0
December	16.7	44.0	26.7

Source: National Centre of Meteorology and Seismology , Statistics Centre- Abu Dhabi

\*Knot = 1.15 mph

**Table 15 : Daily total solar radiation by month, Abu Dhabi - 2017**(Watt/ m<sup>2</sup>/h)

Month	Average	Minimum	Maximum
January	4,640	3,378	5,628
February	4,391	1,316	6,458
March	5,357	1,390	7,281
April	7,020	6,067	7,803
May	6,983	4,124	7,728
June	6,707	5,288	7,481
July	6,287	5,067	6,985
August	6,329	5,448	6,968
September	6,118	5,192	6,787
October	5,627	5,055	6,178
November	4,713	4,083	5,183
December	4,077	3,177	4,679

Source: National Centre of Meteorology and Seismology , Statistics Centre- Abu Dhabi

**Table 16: Daily total solar radiation by month, Al Ain - 2017**(Watt/ m<sup>2</sup>/h)

Month	Average	Minimum	Maximum
January	4,434	2,916	5,329
February	4,626	1,456	6,377
March	5,684	1,020	7,148
April	7,253	6,601	7,836
May	7,450	5,331	8,159
June	7,355	6,285	7,834
July	6,766	5,632	7,538
August	6,828	5,509	7,421
September	6,556	5,442	7,243
October	5,890	5,344	6,440
November	4,900	4,169	5,323
December	4,350	2,403	5,027

Source: National Centre of Meteorology and Seismology , Statistics Centre- Abu Dhabi

**Table 17: Daily total solar radiation by month, Al Dhafra - 2017**(Watt/ m<sup>2</sup>/h)

Month	Average	Minimum	Maximum
January	4,337	2,703	5,044
February	4,235	1,614	6,098
March	5,594	1,996	6,983
April	7,012	5,914	7,598
May	6,654	4,502	7,565
June	6,684	6,012	7,206
July	6,059	4,800	6,740
August	6,585	4,973	7,096
September	6,228	4,914	6,911
October	5,613	5,054	6,176
November	4,656	4,060	5,123
December	4,369	3,333	4,872

Source: National Centre of Meteorology and Seismology , Statistics Centre- Abu Dhabi

**Table 18: Daily total solar radiation by month, The Islands - 2017**(Watt/ m<sup>2</sup>/h)

Month	Average	Minimum	Maximum
January	4,214	2,695	4,954
February	4,453	950	6,228
March	5,298	2,335	7,058
April	7,150	5,363	8,026
May	6,933	4,240	8,032
June	7,024	6,172	7,571
July	6,424	5,546	7,437
August	6,653	5,879	7,244
September	6,190	5,033	6,909
October	5,590	5,072	6,115
November	4,699	3,637	5,214
December	4,202	1,905	4,877

Source: National Centre of Meteorology and Seismology , Statistics Centre- Abu Dhabi

**Table 19: Annual average of sulphur dioxide concentration in ambient air by region\***(Microgram/m<sup>3</sup>)

Station Location	2012	2013	2014	2015	2016	2017
<b>Abu Dhabi</b>						
City Centre - Khadija School	5.6	10.6	9.1	8	13.6	13.6
Urban/ Residential - Khalifa School	5.7	5.7	5.6	8.7	11.2	11.9
Road Side - Hamdan Street	5.4	4.7	5	9.4	13.4	13.1
Urban/ Residential - Baniyas School	3.0	2.7	5.4	7.3	9.4	9.1
Industrial - Mussafah	5.3	5.4	7.5	11.6	12.4	12.5
Industrial – Al Mafraq	14.1	5.3	2.4	5.9	10.0	10.1
Urban area- Khalifa city	-	6.7	9.2	10.0	10.4	10.7
Urban area- Al Maqtaa	-	5.1	4.2	8.1	10.8	10.6
<b>Al Ain</b>						
Urban/ Residential - Al Ain School	4.9	8	7.7	6.4	6.4	6.5
Road Side - Al Ain Street	4.7	9.1	8.7	4.9	5.4	5.6
Regional Background area- Alqoa	-	13.1	4.3	4.5	5.6	5.0
Urban area- Swihan	7.4	5.9	4.1	6.4	8.1	9.1
City Center- Zakher	6.7	5.5	4.3	8.9	8.1	7.5
Urban area- Al Tawya	-	9.9	6.4	5.8	6.4	7.1
<b>Al Dhafra</b>						
Urban/ Residential - Bida Zayed	7.7	10.2	15.2	15.1	15.4	13.7
Road side - E11 Road	-	13	11.4	-	-	19.1
Industrial - Ruwais	-	19.2	17.6	15.6	20.2	14.0
City Centre - Gayathi School	3.9	4.9	10.2	11.2	12.9	11.7
Regional Background - Liwa Oasis	4.7	3.2	6.5	14.1	10.2	17.4
Industrial Regional Background – Habshan	-	8.2	11.1	17	17.7	13.6

Source: Environment Agency - Abu Dhabi

\* The annual maximum allowable limit for sulphur dioxide average concentration is 60 mcg/m<sup>3</sup>

**Table 20: Annual average of nitrogen dioxide concentration in ambient air by region**(Microgram/m<sup>3</sup>)

Station Location	2012	2013	2014	2015	2016	2017
<b>Abu Dhabi</b>						
City Centre - Khadija School	33.5	34.7	28.8	35.7	30.8	34.6
Urban/ Residential - Khalifa School	33.3	32.1	27.8	28.3	27.8	33.1
Road Side - Hamdan Street	46.2	56.7	47.7	49.9	50.1	51.3
Urban/ Residential - Baniyas School	29.3	31.3	32.5	30.7	32.2	34.0
Industrial - Mussafah	43.0	49.3	53.3	49.8	52.4	54.4
Industrial – Al Mafraq	44.0	41.2	49.8	47.7	45.8	48.9
Urban area- Khalifa city	-	25.6	34.7	25.4	28.2	32.1
Urban area- Al Maqtaa	-	31	42	36.9	38.7	45.2
<b>Al Ain</b>						
Urban/ Residential - Al Ain School	27.0	29.3	36.3	34.3	32.4	34.3
Road Side - Al Ain Street	48.7	42	52	42	42.7	42.2
Regional Background area- Alqoa	-	3.8	6.5	4.9	4.5	5.3
Urban area- Swihan	12.2	10.1	15.1	13.8	13.2	16.8
City Center- Zakher	40.8	29	28.4	31.5	35.2	33.8
Urban area- Al Tawya	-	18.4	20.5	25.2	33.4	33.3
<b>Al Dhafra</b>						
Urban/ Residential - Bida Zayed	22.4	19.8	17	16.5	14.0	15.1
Road side - E11 Road	-	17.9	26.4	-	-	21.7
Industrial - Ruwais	-	21.2	28.7	25.6	24.8	15.6
City Centre - Gayathi School	13.2	12.7	16.8	15.6	14.9	5.8
Regional Background - Liwa Oasis	3.4	2.7	4.6	3.8	4.1	13.4
Industrial Regional Background – Habshan	-	12.8	17.2	13.8	13.1	34.6

Source: Environment Agency - Abu Dhabi

**Table 21 : Annual average of ground level ozone concentration in ambient air by region**

(Microgram/m<sup>3</sup>)

Station Location	2012	2013	2014	2015	2016	2017
<b>Abu Dhabi</b>						
City Centre - Khadija School	94.8	96.4	89.2	88.9	79.9	91.4
Urban/ Residential - Khalifa School	73.4	71.1	94.3	99.8	91.2	90.3
Urban/ Residential - Baniyas School	65.2	72.5	103.9	115.4	70.9	70.0
Urban/ Residential – Khalifa city	-	116.1	102.6	114.4	93.3	83.2
Urban/ Residential – Al Maqtaa	-	102.2	78.5	101.6	80.7	90.2
<b>Al Ain</b>						
Urban/ Residential - Al Ain School	68.8	47.7	74.6	94.5	65.0	68.9
Regional Background area- Alqoa	-	111.3	98.5	117.3	91.7	72.9
Urban/ Residential – Swihan	21.9	106.2	101.5	118.2	90.2	92.3
Urban/ Residential – Al Tawya	-	106.7	102.5	97.5	92.7	86.9
<b>Al Dhafra</b>						
Urban/ Residential - Bida Zayed	66.2	68.6	99.7	123.8	95.9	87.6
Industrial -Ruweis	-	101.2	117.7	115.4	91.9	89.1
City Centre - Gayathi School	81.0	78.8	100.5	105.7	91.8	87.8
Regional background - Liwa Oasis	83.1	75	104.1	117.8	106.6	99.4
Industrial Regional Background - Habshan	-	113.1	96.6	106.3	91.9	86.6

Source: Environment Agency - Abu Dhabi

**Table 22: Annual average of particulate matter (PM10) concentration in ambient air by region**

(Microgram/m<sup>3</sup>)

Station Location	2012	2013	2014	2015	2016	2017
<b>Abu Dhabi</b>						
City Centre - Khadija School	121.8	134.8	92.8	138.3	117.1	111.8
Urban/ Residential - Khalifa School	74.3	136.7	82.5	118.6	127.1	120.0
Road Side - Hamdan Street	143.1	106.6	123.5	171.6	101.0	114.0
Urban/ Residential - Baniyas School	189.3	144.7	67.8	142.4	130.0	129.4
Industrial - Mussafah	226.7	163.7	142.3	172.1	158.1	146.3
Industrial – Al Mafrqa	-	196.7	163.8	174.9	206.9	177.9
Urban area- Khalifa city	-	142	83.5	136.1	155.9	120.0
Urban area- Al Maqtaa	-	124.8	112.6	144	136.4	117.9
<b>Al Ain</b>						
Urban/ Residential - Al Ain School	96.4	115.0	105.4	124.1	111.7	116.5
Road Side - Al Ain Street	151.3	155.5	97.7	100.8	102.3	103.3
Regional Background area- Alqoa	-	145.8	95.5	138.1	108.9	130.3
Urban area- Swihan	-	135.7	92.8	132.9	90.8	114.4
City Center- Zakher	-	79.8	94.2	101.9	94.0	125.2
Urban area- Al Tawya	-	130.3	100.6	136.2	100.1	112.7
<b>Al Dhafra</b>						
Urban/ Residential - Bida Zayed	102.3	146.2	98.7	134.8	128.7	128.8
Industrial - Ruwais	-	76.8	121.9	139.7	125.6	108.5
City Centre - Gayathi School	128.4	143.9	95.7	115.9	112.4	111.0
Regional Background - Liwa Oasis	153.0	133.3	110.9	168.3	112.8	113.8
Industrial Regional Background – Habshan	-	-	151.2	106.0	208.1	119.7

Source: Environment Agency - Abu Dhabi

**Table 23: Sulphur dioxide emissions – oil and gas sector**

(Tons)

Business Sector	2014	2015	2016	2017
<b>Total</b>	<b>276,206</b>	<b>363,692</b>	<b>220,249</b>	<b>192,931</b>
Exploration and Production	13,069	11,677	10,067	12,264
Processing and Refining	207,420	301,021	156,219	131,163
Marketing and Distribution	11,719	9,694	7,913	3,396
Independent Operators	43,999	41,300	46,050	46,108

Source: Abu Dhabi National Oil Company - ADNOC.

Note: Business sectors had been re-arranged by data source.

**Table 24: Nitrogen oxides emissions - oil and gas sector**

(Tons)

Business Sector	2014	2015	2016	2017
<b>Total</b>	<b>56,116</b>	<b>54,335</b>	<b>70,820</b>	<b>69,175</b>
Exploration and Production	12,324	8,263	13,229	14,122
Processing and Refining	34,160	33,126	39,598	39,993
Marketing and Distribution	7,308	10,339	15,324	12,854
Independent Operators	2,324	2,607	2,669	2,206

**Table 25: Volatile organic compounds emissions - oil and gas sector**

(Tons)

Business Sector	2014	2015	2016	2017
<b>Total</b>	<b>67,355</b>	<b>64,457</b>	<b>88,491</b>	<b>109,438</b>
Exploration and Production	53,199	51,608	51,086	48,803
Processing and Refining	6,227	9,367	7,689	7,413
Marketing and Distribution	6,906	2,795	28,577	52,177
Independent Operators	1,023	687	1,138	1,045

Source: Abu Dhabi National Oil Company - ADNOC.

Note: Business sectors had been re-arranged by data source.



**Table 26: Carbon dioxide emissions - oil and gas sector**

(Million Tons)

Business Sector	2014	2015	2016	2017
<b>Total</b>	<b>29.4</b>	<b>33.7</b>	<b>34.1</b>	<b>35.8</b>
Exploration and Production	3.6	3.9	4.4	4.5
Processing and Refining	23.9	27.6	27.4	28.7
Marketing and Distribution	1.3	1.4	1.4	1.8
Independent Operators	0.6	0.8	0.9	0.9

Source: Abu Dhabi National Oil Company - ADNOC.

Note: Business sectors had been re-arranged by data source.

**Table 27: Per capita carbon dioxide emissions - oil and gas sector \*\***

(Tons)

Business Sector	2014	2015	2016	2017
<b>Total</b>	<b>11.1</b>	<b>12.1</b>	<b>11.7</b>	<b>12.3</b>
Exploration and Production	1.4	1.4	1.5	1.5
Processing and Refining	9.0	9.9	9.4	9.9
Marketing and Distribution	0.5	0.5	0.5	0.6
Independent Operators	0.2	0.3	0.3	0.3

Source: Abu Dhabi National Oil Company - ADNOC.

Note: Business sectors had been re-arranged by data source.

## Explanatory Notes

### Glossary

This report contains certain terms specific to environment and necessary when analysing the environment statistics of Abu Dhabi Emirate. They include the following terms:

#### **Environment:**

Environment is the whole external conditions which affect the life, growth, and existence of a living organism on earth including climate, air, water, soil, metals, and the living organisms.

#### **Environmental statistics:**

Environmental statistics are statistics that describe the state and trends of the environment covering the natural environment (air/ climate, water, land/soil), living organisms in their ecosystems and human settlements. Environmental statistics are integrative in nature, measuring human activities and natural events that affect the environment, the impact of these activities and events, and the social responses to environmental impacts. Broad definitions include environmental indicators, indices and accounting <sup>(2)</sup>

### **Climate**

#### **Atmospheric pressure:**

Atmospheric pressure is the weight of the air column that extends from the surface of the ground until the end of the atmosphere of the Earth. Air pressure is one of the most important weather elements. The difference in atmospheric pressure leads to the emergence of descendant force which is the main cause of air movement from one place to another and that is wind. Thus transferring energy from one place to another and causing fluctuations in weather and climate.

Atmospheric pressure at sea level is equivalent to the mercury column of height 76 cm. and the atmospheric pressure is inversely proportional to the degree of air temperature. When temperature rises, air expands and density decreases, then decreasing the weight and pressure, and vice versa. If temperature decreases, air shrinks and gains weight, the pressure rises. In addition, air pressure rises or decreases with increasing or decreasing the altitude from sea level.

#### **Average rainfall:**

Average rainfall is the average of the amounts of falling rain in millimeter within one month or year.

**Climate:**

Climate is the condition of weather at a particular location or region over a long period of time that can be a month, a year, a season, or several years. It is the long-term result in the atmosphere including elements, such as temperature, solar radiation humidity, rainfall, atmospheric pressure, wind speed and direction, and the variations of these elements.

**Heaviest fall:**

Heaviest fall is the highest amount of rainfall in millimetre on a certain location within one month or year (a period of time).

**Relative humidity:**

It is a percentage of water vapor mass per unit volume of air relative to the mass of water vapor necessary to satisfy the same volume unit, at the same temperature and atmospheric pressure.

Relative humidity % = (Actual water vapor pressure / Saturation water vapor pressure) \* 100    OR

Relative humidity % = (Specific humidity / Saturation specific humidity) \* 100

The relative humidity changes during the day depending on temperature because the saturation vapor pressure controlled by temperature. Relative humidity is low during the day and rises gradually to reach its highest levels in the last hours of the night at the minimum temperatures. Sometimes the saturation may lead to formation of dew, if temperature is higher than zero degree centigrade or frost if the temperature is below zero centigrade.

**Solar radiation**

It is a set of ethereal radiation from the sun such as light and radiant heat, and others.

**Sunshine:**

It is the number of hours of sunshine during the daytime. It is measures in the period where sun light not veiled as a result of clouds, fog or particles stuck (e.g., smog).

**Winds:**

It is the horizontal movement of air, and air moves either up or down causing what is known as updrafts and downdrafts. The sun is the primary source of climatic changes on earth as the sun rays heat and stretch the air and consequently its pressure decreases and winds move from areas with high atmospheric pressure to areas of low atmospheric pressure. Because the earth rotates around itself, the wind does not blow go directly from high pressure areas to low pressure, but deviates to the right direction in the northern hemisphere and to the left direction in the southern hemisphere because of the "Coriolis effect" resulting from the earth's rotation on its axis.

## Air Statistics

### **Air Pollution:**

It is the presence of contaminant or pollutant substances a pollutant in air that do not disperse properly and interfere with human health or welfare, or produce other harmful environmental effects <sup>(2)</sup>.

### **Annual mean concentration:**

It is the arithmetic mean over all valid measurements for the respective year <sup>(1)</sup>.

### **Carbon Dioxide (CO<sub>2</sub>):**

It is a colorless, odorless and non-poisonous gas that results from fossil fuel combustion and is normally a part of ambient air. It is also produced in the respiration of living organisms (plants and animals), and considered to be the main greenhouse gas, contributing to climate change <sup>(2)</sup>.

### **Carbon dioxide emissions (per Capita):**

Carbon dioxide emissions per capita is the total amount of carbon dioxide emitted by a country as a consequence of human (production and consumption) activities, divided by the population of the country. This include emissions of carbon dioxide include emissions from consumption of solid, liquid and gas fuels; cement production; and gas flaring. National reporting to the United Nations Framework Convention on Climate Change, which follows the Intergovernmental Panel on Climate Change guidelines, is based on national emission inventories and covers all sources of anthropogenic carbon dioxide emissions as well as carbon sinks (such as forests). Carbon dioxide emissions per capita are calculated by dividing carbon dioxide emissions by the number of people in the national population <sup>(1)</sup>.

### **Carbon Monoxide (CO):**

Colorless, odorless and poisonous gas produced by incomplete fossil fuel combustion. Carbon monoxide combines with the hemoglobin of human beings, reducing its oxygen carrying capacity, with effects harmful to human beings <sup>(2)</sup>.

### **Decibel:**

It is the unit of sound measurement on a logarithmic scale, with sound approximately doubling in loudness for every increase of 10 decibels <sup>(2)</sup>.

### **Ground Level Ozone (O<sub>3</sub>):**

Ozone presents as a secondary pollutant in the lower atmosphere, where its formation can be enhanced by other pollutants. It is highly toxic at levels above 0.1 parts per million (p.p.m) <sup>(2)</sup>.

**Nitrogen dioxide (NO<sub>2</sub>):**

It is a reddish - brown very toxic gas with a strong irritating smell. When present in high concentrations, it causes serious damage to the lungs. Nitrogen dioxide is an oxidant which reacts in air forming nitric acid causing corrosion in addition to the formation of toxic organic nitrates that contribute to the production of ground-level ozone and smog.

**Nitrogen oxides (NO<sub>x</sub>):**

Nitrogen oxides are formed quickly from emissions from cars, in addition to contributing to the formation of ground-level ozone.

**Noise:**

Audible sound from traffic, construction and so on that may generate unpleasant and harmful effects (hearing loss). It is measured in decibels <sup>(2)</sup>.

**Ozone (O<sub>3</sub>):**

A pungent, colorless, toxic gas contains three atoms of oxygen in each molecule. It occurs naturally at a concentration of about 0.01 parts per million (p.p.m) of air. Levels of 0.1 p.p.m. ppm considered toxic. In the stratosphere, ozone provides a protective layer shielding the earth from the harmful effects of ultraviolet radiation on human beings and other biota. In the troposphere, it is a major component of photochemical smog, which seriously affects the human respiratory system <sup>(2)</sup>.

**Suspended Particulate Matter**

Fine liquid or solid particles, such as dust, smoke, mist, fumes or smog found in air or emissions <sup>(2)</sup>.

**Remote regions/ background site:**

It refers to monitoring stations far from any industrial or densely populated area <sup>(1)</sup>.

**Sulphur dioxide (SO<sub>2</sub>):**

It is a heavy, pungent colorless gas formed by the combustion of fossil fuels. It is harmful to human beings and vegetation, and contributes to the acidity in precipitation <sup>(2)</sup>.

**Suspended particulate matter (SPM<sub>10</sub>):**

It refers to finely divided solids or liquids, less than 10 (micrometers) that maybe dispersed through the air from combustion processes, industrial activities or natural sources <sup>(1)</sup>.

### **Volatile Organic Compounds**

They are organic compounds that evaporate readily and contribute to air pollution mainly through the production of photochemical oxidants <sup>(2)</sup>.

### **Volatile organic compounds except for methane (NMVOCs):**

They are emissions produced mainly in fuel combustion and in processes that use solvents or solvent-based products such as painting, metal degreasing etc. Several of these chemicals are harmful to human health if inhaled, ingested, and drunk or get in contact with skin. NM-VOCs are significant precursors to ground level ozone formation. NM-VOCs are the sum of all hydrocarbon air pollutants except methane <sup>(1)</sup>.

## **Water Statistics**

### **Biochemical oxygen demands (BOD)**

Amount of dissolved oxygen required by organisms for the aerobic decomposition of organic matter present in water. This measured at 20 degrees Celsius for a period of five days. The parameter yields information on the degree of water pollution with organic matter <sup>(3)</sup>.

### **Biological treatment:**

It is a wastewater treatment employing aerobic and anaerobic micro-organisms that results in decanted effluents and separate sludge containing microbial mass together with pollutants. Biological treatment processes also used in combination or in conjunction with mechanical treatment <sup>(1)</sup>.

### **Desalinated Water:**

Total volume of water obtained from desalination of (i.e., removal of salt from) seawater and brackish water <sup>(3)</sup>.

### **Mechanical treatment:**

It is the treatment of a physical and mechanical nature that results in decanted effluents and separate sludge. Mechanical processes are also used in combination and/or in conjunction with biological and advanced unit operations. Mechanical treatment includes processes as sedimentation, flotation, etc. <sup>(1)</sup>.

### **Seawater:**

Seawater is water from a sea or ocean. On average, seawater in the world's oceans has a salinity of ~3.5 percent. This means that for every 1 liter (1000 ml) of seawater there are 35 grams of salts (mostly, but not entirely, sodium chloride) dissolved in it <sup>(3)</sup>.

**Sewage sludge production (dry matter)**

The accumulated settled solids, either moist or mixed, with a liquid component as a result of natural or artificial processes, that have been separated from various types of waste water during treatment <sup>(3)</sup>.

**Total public water supply:**

Water supplied by economic units engaged in collection, purification and distribution of water (including desalting of seawater to produce water as the principal product of interest, and excluding system operation for agricultural purposes and treatment of wastewater solely in order to prevent pollution.) It corresponds to ISIC division 41. Deliveries of water from one public supply undertaking to another are excluded <sup>(1)</sup>.

**Total reuse of freshwater:**

Freshwater that has undergone wastewater treatment and is deliverable to a user as reclaimed wastewater. This means the direct supply of treated effluent to the use. Excluded is wastewater discharged into watercourse and used again downstream <sup>(1)</sup>.

**Total wastewater generated:**

The quantity of water in cubic meters (m<sup>3</sup>) that is discharged due to being of no further immediate value to the purpose for which it was used or in the pursuit of which it was produced because of its quality, quantity or time of occurrence <sup>(1)</sup>.

**Total wastewater treatment:**

Process to render waste water fit to meet applicable environmental standards or other quality norms for recycling or reuse <sup>(1)</sup>.

**Treated in other treatment plants:**

Treatment of wastewater in any non-public treatment plants, i.e. industrial wastewater plants. Excluded from 'Other wastewater treatment' is treatment in under independent treatment facilities such as septic tanks <sup>(1)</sup>.

**Treatment in independent treatment facilities:**

Individual private treatment facilities to treat domestic and other wastewater in cases where a public waste water network is not available or not justified either because it would produce no environmental benefits . Examples of such systems are treatment in wastewater tanks <sup>(1)</sup>.

**Wastewater treated in public treatment plants:**

All treatment of wastewater in municipal treatment plants by official authorities, or by private companies for local authorities, whose main purpose is wastewater treatment <sup>(1)</sup>.

**Water transmission system availability:**

Water Transmission System Availability calculated in percentage in terms of the summation of the availabilities of transmission system components, such as pumps, water transmission lines, storage tanks, and surge vessels.

**Health and safety Statistics****Food poisoning:**

It refers to any illness caused by infection or poisoning resulting from food or water consumption. Food poisoning may affect individuals or group of people who have consumed the same contaminated food or drinks that contained harmful substance (toxin) or pathogens (bacteria, virus, and parasite) or chemical or allergic substances. Food poisoning has various factors and symptoms.

**Occupational health and safety:**

It is a discipline concerned with protecting the health and safety of people engaged with work by fostering a safe illness and accident-free environment. In other words, it is a set of procedure and rules within legislative framework aiming at protecting man from injures and possessions from being damaged or lost.

**Occupational accident:**

The harm that happens to a worker because of an accident is defined as “injury” as a direct result of an accident to that labor. Occupational accident defined as work-related injury that occurs to the worker at the workplace or because of it, is also one of the injuries occurring to workers on their way to work or returning from work, if the labor used the regular route without interruption or deviation. The occupational diseases also considered as work injuries.



## Waste Statistics

### **Agriculture wastes:**

All waste from agricultural and forestry activities <sup>(1)</sup>.

### **Composting:**

A biological process that submits biodegradable waste to anaerobic or aerobic decomposition, and that results in a product that is recovered <sup>(1)</sup>.

### **Construction waste:**

All waste from construction activities. This category refers to waste generated in ISIC division 45<sup>(1)</sup>.

### **Hazardous waste:**

It is the wastes that, owing to their toxic, infectious, radioactive or flammable properties pose a substantial actual or potential hazard to the health of humans and other living organisms and the environment <sup>(1)</sup>.

### **Incineration:**

It is a controlled burning of waste materials with or without energy restoration <sup>(1)</sup>.

### **Incineration plants:**

Facilities for burning waste under controlled conditions, with or without energy recovery <sup>(1)</sup>.

### **Industrial waste:**

Include wastes from mine, quarries, manufacturing industries, energy production, and construction <sup>(1)</sup>.

### **Landfilled waste:**

This includes all amounts of waste transferred to landfill, either directly, or after sorting and/or treatment, as well as residues from recovery and disposal operations for dispatch to landfill. Landfill is the final placement of waste into or onto the land in a controlled or uncontrolled way. The definition covers both in-house landfills, where a generator of waste carries out its own waste disposal on site) as well as in external landfills <sup>(1)</sup>.

### **Landfills:**

It refers to the sites that manage the final placement of waste in or on the land in a controlled or uncontrolled way <sup>(1)</sup>.

**Liquid waste:**

Liquid products or outputs resulting from the use of water produced by manufacturing processes and leftover industrial materials, such as oils that are disposed of by on-site treatment, sewage network, dumping into the sea or via other disposal routes.

**Municipal waste:**

Municipal waste includes household waste and similar waste. The definition also includes bulky waste (e.g. white goods, old furniture, mattresses) and yard waste, leaves, grass clippings, street sweepings, the content of litter containers, and market cleansing waste, if managed as waste. It includes waste originating from: households, commerce and trade, small businesses, office buildings and institutions (schools, hospitals, government buildings). It also includes waste from selected municipal services, i.e. waste from park and garden maintenance, waste from street cleaning services (street sweepings, the content of litter containers, market cleansing waste), if managed as waste. The definition excludes waste from municipal sewage network and treatment, municipal construction and demolition waste <sup>(1)</sup>.

**Municipal waste collected:**

Municipal waste collected by or on behalf of municipalities, as well as municipal waste collected by the private sector. It includes mixed household waste, and fractions collected separately for recovery operations (through door-to-door collection and/or through voluntary deposits) <sup>(1)</sup>.

**Municipal waste generated:**

This amount is the sum of the amount of municipal waste collected plus the estimated amount of municipal waste from areas not served by a municipal waste collection service <sup>(1)</sup>.

Municipal waste managed in a country:

The amount of municipal waste collected in the country –amount exported before treatment or disposal + amount imported for treatment or disposal <sup>(1)</sup>.

**Oil spill:**

Oil, discharged accidentally or intentionally, that floats on the surface of water bodies as a discrete mass and is carried by the wind, currents and tides. Oil spills can be partially controlled by chemical dispersion, combustion, mechanical containment and adsorption. They have destructive effects on coastal ecosystems <sup>(2)</sup>.

**Other (waste treatment/disposal):**

It refers to any other final treatment or disposal different from recycling (composting), incineration and landfill. Permanent storage of waste is included here <sup>(1)</sup>.

**Recycling:**

It is the reusing of waste materials in production process by restoring them from wastes, except reusing as fuel <sup>(1)</sup>.

**Treatment Plants:**

Facilities for the physical, thermal, chemical, or biological processing of waste that change the characteristics of the waste in order to reduce its volume or hazardous nature, facilitate its handling, or enhance recycling. Composting plants are included in this type of treatment <sup>(1)</sup>.

**Wastes:**

Materials that are not prime products (that is, products produced for the market) for which the generator has no further use in terms of his/her own purposes of production, transformation or consumption, and of which he/she wants to dispose, with the exception of wastes recycled or reused in place of production (i.e. establishments) and wastes discharged directly to water or ambient air <sup>(1)</sup>.

## Biodiversity Statistics

**Biodiversity**

The range of genetic differences, species differences and ecosystem differences in a given area (United Nations, 1997).

**IUCN red list**

The IUCN Red list classification consists of the following categories:

- **Extinct (EX)**

A species is Extinct when there is no reasonable doubt that the last individual has died. A species is presumed Extinct when exhaustive surveys in known and/or expected habitat, at appropriate times (diurnal, seasonal, annual), and throughout its historic range have failed to record an individual. Surveys should be over a time frame appropriate to the species' life cycle and life form (IUCN, 2001).

- **Extinct in the wild (EW)**

A species is Extinct in the wild when it is known only to survive in cultivation, in captivity or as a naturalized population (or populations) well outside the past range. A species is presumed extinct in the wild when exhaustive surveys in known and/or expected habitat, at appropriate times (diurnal, seasonal, annual), and throughout its historic range have failed to record an individual. Surveys should be over a time frame appropriate to the species' life cycle and life form (IUCN, 2001).

- **Threat Categories**

Threat categories include the three threat categories: Endangered (CR), Endangered (EN) and Vulnerable (VU).

- **Species is classified into Critically Endangered (CR), Endangered (EN) or Vulnerable (VU)**

When its best available evidence meet one of the five criteria (A to E) of each category (see part five of the IUCN categories and criteria in the sources), which indicates that it's facing an extremely high risk of extinction in the wild in the immediate future (IUCN, 2001).

- **Near Threatened (NT)**

A species is Near Threatened when it has been evaluated against the criteria but does not qualify for Critically Endangered, Endangered or Vulnerable now, but is close to qualifying for or is likely to qualify for a threatened category in the near future (IUCN, 2001).

- **Least Concern (LC)**

A species is Least Concern when it has been evaluated against the criteria and does not qualify for Critically Endangered, Endangered, Vulnerable or Near Threatened. Widespread and abundant taxa are included in this category (IUCN, 2001).

- **Data Deficient (DD)**

A species is Data Deficient when there is inadequate information to make a direct, or indirect, assessment of its risk of extinction based on its distribution and/or population status. A species in this category may be well studied, and its biology well known, but appropriate data on abundance and/or distribution is lacking. Data Deficient is therefore not a category of threat or Lower Risk. Listing of taxa in this category indicates that more information is required and acknowledges the possibility that future research will show that threatened classification is appropriate (IUCN, 2001).

- **Not Evaluated (NE)**

A species is Not Evaluated when it has not yet been assessed against the criteria (IUCN, 2001).

**Total Number of Known species** refers to the total number of a particular type of species known, described and documented in a given class in a particular country or region (Abu Dhabi Emirate). Total number of known mammals and reptiles recorded include marine species. Total number of known bird species recorded includes residential and migratory bird species.

**Total Number of threatened species** refers to the total number of species facing a higher risk of global extinction or/and local extinction; those which are critically endangered (CR), endangered (EN), or vulnerable (VU) in the IUCN Red List and/or Local Red List.

Number of threatened species should be interpreted as the number of species known to be threatened within those that have been assessed to date; there are still species that have not yet been assessed.

**Extinction** is a chance process. Thus, a listing in a higher extinction risk category implies a higher expectation of extinction, and over the time-frames specified more taxa listed in a higher category are expected to go extinct than those in a lower one (without effective conservation action). However, the persistence of some taxa in high-risk categories does not necessarily mean their initial assessment was in accurate (IUCN, 2001).

## Abbreviations used

- ADWEA: Abu Dhabi Water and Electricity Authority
- BOD: Biochemical Oxygen Demand
- EAD: Environment Agency - Abu Dhabi
- L: Liter
- Mcg: Microgram
- Mg: Milligram
- Mph: Mile per Hour
- EX: Extinct
- EW: Extinct in the wild
- CR: Critically Endangered
- EN: Endangered
- VU: Vulnerable
- NT: Near Threatened
- LC: Least Concern
- DD: Data Deficient
- NE: Not Evaluated
- OE: Over-Exploited
- WSL: Exploitation within Sustainable Limit
- IUCN: International Union for Conservation of Nature

## Data sources

Data obtained from the National Centre of Meteorology and Seismology, Environment Agency - Abu Dhabi, Abu Dhabi National Oil Company (ADNOC), Abu Dhabi Water and Electricity Company ADWEC, Abu Dhabi Water & Electricity Authority - ADWEA, Abu Dhabi Sewerage Services Company (ADSSC), Health Authority - Abu Dhabi (HAAD), in addition to the Centre of Waste Management - Abu Dhabi. The data are processed and passed to Statistic Centre – Abu Dhabi for further editing and compilation.

## Symbols used

“–” Not Available

“>” number in reality exceeds what is documented in table.

## Notes on tables

Due to rounding, totals may not equal the sum of component parts.

Unless otherwise indicated, all tables in this publication relate to the Emirate of Abu Dhabi. However, when mentioned in table titles or within table cells "Abu Dhabi" refers only to the Region of Abu Dhabi and not the whole Emirate.

## More information and next release

For more information about environmental statistics and other official statistics, please visit the statistics link on the SCAD website at <http://www.scad.ae>

The next release expected in October 2018 for 2017 data.

## References

1. United Nations Economic and Social Commission for Western Asia (ESCWA). (2007). The Compendium of environment statistics in the ESCWA region. New York"
2. United Nation Statistics Division (UNSD). (1997). Glossary of environment statistics (F, No 67). New York
3. "United Nation Statistics Division (UNSD). (2010). Questionnaire 2010 on environment statistics (section: water). Retrieved from <http://unstats.un.org/unsd/environment/questionnaire2010.htm>"