



مركز الإحصاء - أبوظبي
STATISTICS CENTRE - ABU DHABI



Birth Statistics 2010

April 2012

Table of Contents

Introduction	4
Key Indicators, Abu Dhabi Emirate - 2010	5
Key Points	6
Figure 1: Live Births, Abu Dhabi Emirate-1975 to 2010	6
Live Births	7
Figure 2: Births by Citizenship and Region, Abu Dhabi Emirate - 2010	7
Births by Month	8
Figure 3: Percentage Distribution of Births by Month and Citizenship, Abu Dhabi Emirate - 2010	8
Sex Ratio at Birth	9
Figure 4: Sex Ratio at Birth for Citizens, Abu Dhabi Emirate – 2001, 2005, 2009 and 2010	9
Crude Birth Rate (CBR)	10
Figure 5: Crude Birth Rate (Per 1000 Population) for Citizens, Abu Dhabi Emirate - 2001, 2005, 2009 and 2010	10
Figure 6: Crude Birth Rate (Per 1000 Population) by Citizenship and Region, Abu Dhabi Emirate - 2010	11
General Fertility Rate (GFR)	12
Figure 7: General Fertility Rate (Births Per 1000 women Age 15-49 years) by Citizenship and Region, Abu Dhabi Emirate - 2010	12
Statistical Tables	13
Table 1: Births by Citizenship, Gender and Region, Abu Dhabi Emirate - 2010	13
Table 2: Births by Month, Citizenship and Gender, Abu Dhabi Emirate - 2010	13
Table 3: Percentage Distribution of Births by Month, Citizenship and Gender, Abu Dhabi Emirate - 2010	14
Table 4: Sex Ratio at Birth by Year and Citizenship, Abu Dhabi Emirate - 2001, 2005, 2009 and 2010	14
Table 5: Crude Birth Rate (Per 1000 Population) by Citizenship, Abu Dhabi Emirate - 2001, 2005, 2009 and 2010	14
Table 6: Crude Birth Rate (Per 1000 Population) by Citizenship, Gender and Region, Abu Dhabi Emirate - 2010	15

Statistical Tables	13
Table 1: Births by Citizenship, Gender and Region, Abu Dhabi Emirate - 2010	13
Table 2: Births by Month, Citizenship and Gender, Abu Dhabi Emirate - 2010	13
Table 3: Percentage Distribution of Births by Month, Citizenship and Gender, Abu Dhabi Emirate - 2010	14
Table 4: Sex Ratio at Birth by Year and Citizenship, Abu Dhabi Emirate - 2001, 2005, 2009 and 2010	14
Table 5: Crude Birth Rate (Per 1000 Population) by Citizenship, Abu Dhabi Emirate - 2001, 2005, 2009 and 2010	14
Table 6: Crude Birth Rate (Per 1000 Population) by Citizenship, Gender and Region, Abu Dhabi Emirate - 2010	15
Table 7: Crude Birth Rate (Per 1000 Population) by Year, Region, Abu Dhabi Emirate - 2005, 2009 and 2010	15
Table 8: General Fertility Rate (Births Per 1000 women Aged 15-49 years) by Citizenship and Region, Abu Dhabi Emirate - 2010	15
Table 9: General Fertility Rate (Births Per 1000 women Aged 15-49 years) by Year and Region, Abu Dhabi Emirate - 2005, 2009 and 2010	15
Explanatory Notes	16
Glossary	16
Data sources	16
Technical notes	16
Abbreviations used	16
Notes on tables	16
More information and next release	17

Introduction

This report presents statistics on live births in Abu Dhabi Emirate in 2010. Statistics of births in the years 2001, 2005 and 2009 are included to show trends in fertility. It contains numbers of live births, sex ratio, and relative distribution of births by month and fertility rates. It also covers birth indicators and General Fertility rates tabulated by, among other attributes, citizenship, gender and region.

The main source for these statistics is the Health Authority - Abu Dhabi (HAAD).

The Explanatory Notes section at the end of this report provides an explanation of the key terms and technical concepts used in births and fertility. Readers are encouraged to refer to that section in conjunction with reading the statistics and information outlined in the report.

Key Indicators, Abu Dhabi Emirate - 2010

Births

Total	* 29,528
Citizens	13,635
Non-Citizens	15,867

*Including 26 cases with not stated citizenship

Sex Ratio at Birth (Males per 100 Females)

Total	104.4
Citizens	102.3
Non-Citizens	106.1

Crude Birth Rate (Per 1000 Population)

Total	15.0
Citizens	31.4
Non-Citizens	10.3

General Fertility Rate (Births Per 1000 women Aged 15-49 years)

Total	80.7
Citizens Females	118.4
Non-Citizens Females	63.2

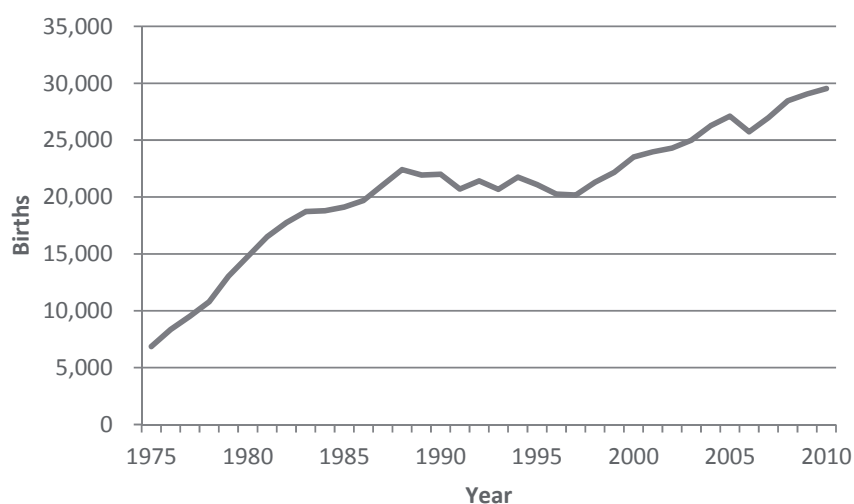
Key Points

- There were 29,528 live births in Abu Dhabi Emirate in 2010, compared with 23,974 in 2001 (a rise of 23.2 per cent).
- The Crude Birth Rate (CBR) (per 1000 population) decreased to 15.0 births (per 1000 population) in 2010, while it was 20.8 births (per 1000 population) in 2001.
- In 2010, the General Fertility Rate (GFR) decreased to 80.7 children per 1000 women in reproductive age (15-49 years) from 94.3 children (per 1000 women aged 15-49 years) in 2005.
- Al Ain Region saw the highest rates of births and fertility in 2010.

Key Trends in Births (number and rate)

Administrative records show a rise in live births in Abu Dhabi Emirate in the registration statistics. The number of live births in 1975 totaled 6,854. It increased significantly in the period to 2010 reaching 29,528 live births, an increase of 4.3 times during this period.

Figure 1: Live Births, Abu Dhabi Emirate-1975 to 2010



Source: Ministry of Health, Health Authority – Abu Dhabi

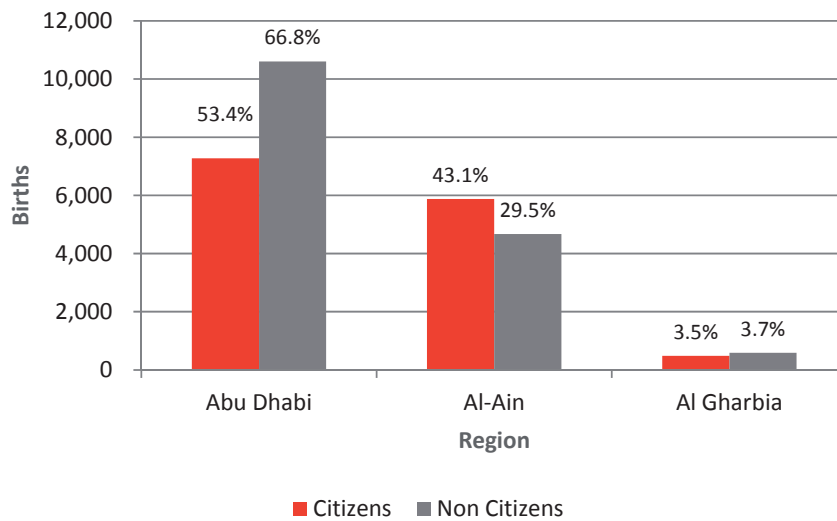
Live Births

Administrative records showed the number of live births was 29,528 in 2010, an increase of 23.2% between 2001 and 2010. Furthermore, the data indicates that there were increases of 31.3 % and 16.7% respectively for registered births of citizens and non-citizens throughout the Emirate in the same years.

In 2010, citizen births formed 46.2% of the total births in the Emirate. The administrative records show that citizen births vary by regions, where Abu Dhabi Region formed the highest percentage with 53.4%, followed by Al Ain Region with 43.1%, and Al Gharbia Region by 3.5%.

Non-citizens births represented 53.7% of the total in the Emirate. Non-citizens births in Abu Dhabi Region totalled 66.8%, while they recorded in Al Ain Region and Al Gharbia Region 29.5% and 3.7% respectively.

Figure 2: Births by Citizenship and Region, Abu Dhabi Emirate - 2010

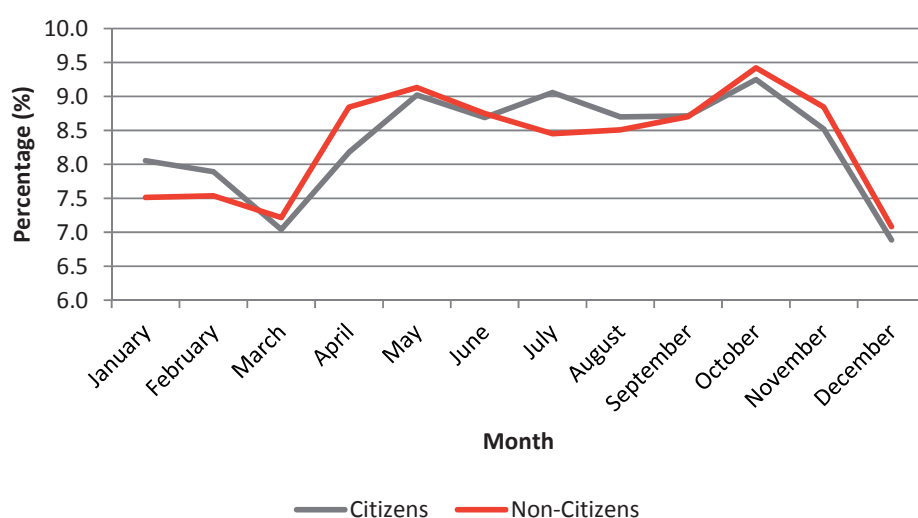


Source: Statistics Centre – Abu Dhabi, Health Authority-Abu Dhabi

Births by Month

The chart below shows the relative distribution of births for each month in 2010. It reveals a great deal of volatility between months, with no obvious tendency in the long term. The average distribution of births during the first quarter of the year was the least among other quarters, reaching on the average 7.5% per month in the first quarter, then this percentage rose in the next two quarters, where the figures were on the average 8.8% and 8.7% in the second and the third quarter respectively, then it decreased to 8.3% in the fourth quarter. The proportion of births in October was the largest rate with 9.3%, while the lowest was in December at 7.0%, (A range of 2.3 percentage points). On the other hand, the relative distribution did not differ between citizens and non-citizens often in 2010 except in January and July (a difference of 0.4% and 0.6% in January and July, respectively).

Figure 3: Percentage Distribution of Births by Month and Citizenship, Abu Dhabi Emirate - 2010



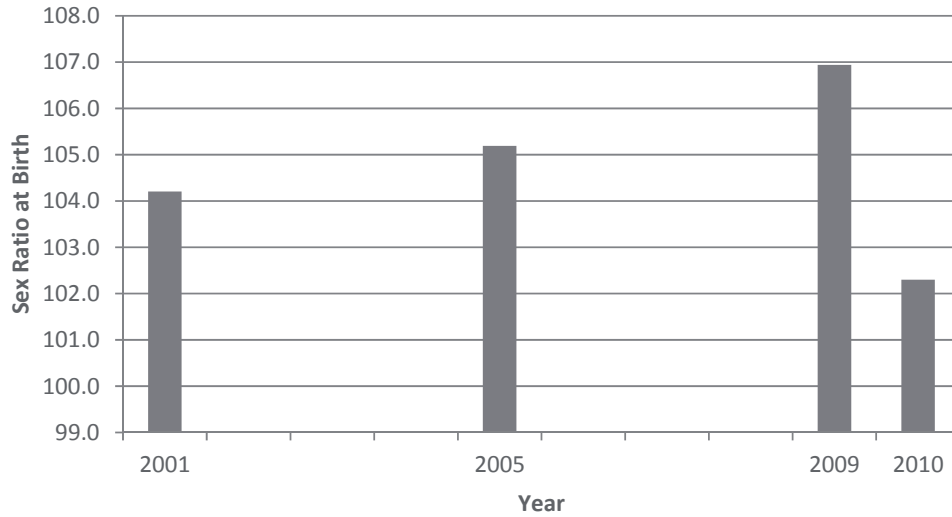
Source: Statistics Centre – Abu Dhabi (SCAD)

Sex Ratio at Birth

Statistics of the Emirate of Abu Dhabi show that the Sex Ratio at Birth fluctuated between 2001 and 2010 for both citizens and non-citizens. In 2001, the Sex Ratio at Birth was 103.6 for the whole Emirate (or 103.6 males per 100 females), with 104.2 for citizens and 103.1 for non-citizens.

In 2010, the Sex Ratio at Birth was 104.4 (104.4 males per 100 females) with 102.3 and 106.1 for citizens and non-citizens respectively.

Figure 4: Sex Ratio at Birth for Citizens, Abu Dhabi Emirate – 2001, 2005, 2009 and 2010



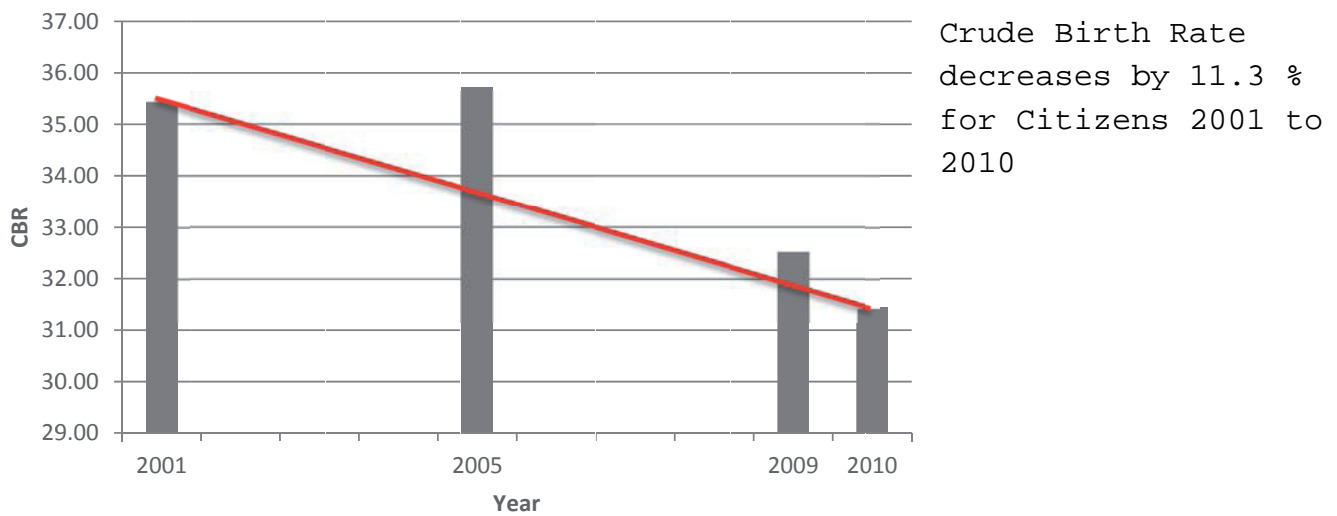
Source: Statistics Centre – Abu Dhabi (SCAD)

Crude Birth Rate (CBR)

Statistics show a noticeable reduction of the Crude Birth Rate by citizenship over the years 2001, 2005, 2009 and 2010. During this time, it is noted that the CBR gradually reduced across the Emirate. The CBR in 2001 was approximately 20.8 births per 1000 population, dropping to 19.7 in 2005, then 15.9 in 2009, before falling to 15.0 births (per 1000 population) in 2010.

The CBR for citizens fluctuated from, 35.4 in 2001, increasing to 35.7 in 2005, followed by a decline to 32.5 in 2009 and 31.4 in 2010. As for the total of non-citizens, there was a decline from 15.8 in 2001 down to 10.3 in 2010.

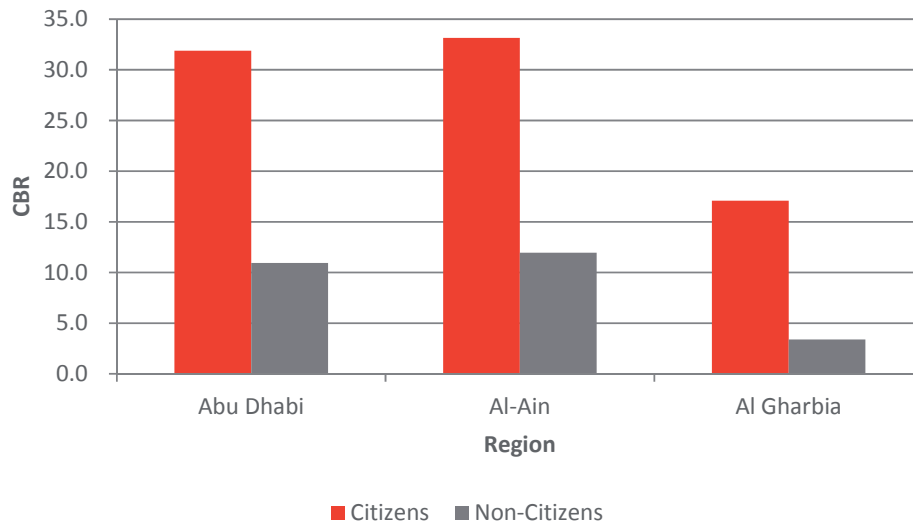
Figure 5: Crude Birth Rate (Per 1000 Population) for Citizens, Abu Dhabi Emirate - 2001, 2005, 2009 and 2010



Source: Statistics Centre – Abu Dhabi (SCAD)

CBR varies by citizenship and region as shown in Figure 6, reaching the maximum for citizens in Al Ain Region at 33.2 birth per 1000 population and the lowest in Al Gharbia Region, where the CBR was 17.1 for citizens per 1000 population. The same applies to non-citizens, where CBRs show that it reached its maximum in the Al Ain Region with 12.0 births per 1000 population, and the minimum in Al Gharbia with 3.4 per 1000 population.

Figure 6: Crude Birth Rate (Per 1000 Population) by Citizenship and Region, Abu Dhabi Emirate - 2010



Source: Statistics Centre – Abu Dhabi (SCAD)

General Fertility Rate (GFR)

Comparing General Fertility Rate in 2010 (GFR) by citizenship, it is noticed that citizen females have higher GFR than non-citizen females throughout the whole Emirate and in each of the regions. Consequently, the indicator shows that for every 1000 citizen females within the pregnancy age (15-49) 118.4 babies were born and for every 1000 non-citizen females within the pregnancy age (15-49) there were 63.2 babies born. Although the number of non-citizen births is higher than citizen births, the lower GFR for non-citizens is due to the much larger number of non-citizen females within the age category (15-49) compared with the citizen females within the same age category,

By comparing regions, Al Ain Region witnessed the highest number of births with 123.1 births per 1000 citizen females within the pregnancy age and 68.6 births per 1000 non-citizens females within the pregnancy age. The GFR is the lowest in Al Gharbia Region with 71.8 births per 1000 citizen females and 47.6 per 1000 non-citizen females.

Figure 7: General Fertility Rate (Births Per 1000 women Age 15-49 years) by Citizenship and Region, Abu Dhabi Emirate - 2010



Source: Statistics Centre – Abu Dhabi (SCAD)

Statistical Tables

Table 1: Births by Citizenship, Gender and Region, Abu Dhabi Emirate - 2010

Citizenship / Gender	Abu Dhabi	Al-Ain	Al Gharbia	Total*
Total	17,878	10,549	1,074	29,501
Males	9,228	5,275	562	15,065
Females	8,650	5,274	512	14,436
Citizens	7,274	5,874	486	13,634
Males	3,694	2,949	253	6,896
Females	3,580	2,925	233	6,738
Non-Citizens	10,604	4,675	588	15,867
Males	5,534	2,326	309	8,169
Females	5,070	2,349	279	7,698

Source: Health Authority-Abu Dhabi

*Excluding 27 cases with not stated citizenship or gender

Table 2: Births by Month, Citizenship and Gender, Abu Dhabi Emirate - 2010

Month	Citizenship & Gender								
	Citizens			Non-Citizens			Total		
	Males	Females	Total	Males	Females	Total	Males	Females	Total
Total	6896	6738	13635	8169	7698	15867	15081	14446	29528
January	546	552	1098	622	570	1192	1171	1124	2295
February	537	539	1076	623	573	1196	1160	1113	2273
March	483	477	960	595	550	1145	1080	1029	2109
April	569	546	1115	729	674	1403	1298	1221	2519
May	634	596	1230	741	708	1449	1379	1304	2683
June	608	577	1185	726	662	1388	1334	1242	2576
July	628	607	1235	657	684	1341	1287	1292	2579
August	595	591	1186	667	683	1350	1263	1274	2537
September	588	599	1188	711	670	1381	1301	1269	2571
October	650	611	1261	772	723	1495	1423	1334	2757
November	589	573	1162	733	670	1403	1323	1243	2566
December	469	470	939	593	531	1124	1062	1001	2063

Source: Health Authority-Abu Dhabi

Table 3: Percentage Distribution of Births by Month, Citizenship and Gender, Abu Dhabi Emirate - 2010

Month	Citizenship & Gender								
	Citizens			Non-Citizens			Total		
	Males	Females	Total	Males	Females	Total	Males	Females	Total
Total	100	100	100	100	100	100	100	100	100
	%								
January	7.9	8.2	8.1	7.6	7.4	7.5	7.8	7.8	7.8
February	7.8	8.0	7.9	7.6	7.4	7.5	7.7	7.7	7.7
March	7.0	7.1	7.0	7.3	7.1	7.2	7.2	7.1	7.1
April	8.3	8.1	8.2	8.9	8.8	8.8	8.6	8.5	8.5
May	9.2	8.8	9.0	9.1	9.2	9.1	9.1	9.0	9.1
June	8.8	8.6	8.7	8.9	8.6	8.7	8.8	8.6	8.7
July	9.1	9.0	9.1	8.0	8.9	8.5	8.5	8.9	8.7
August	8.6	8.8	8.7	8.2	8.9	8.5	8.4	8.8	8.6
September	8.5	8.9	8.7	8.7	8.7	8.7	8.6	8.8	8.7
October	9.4	9.1	9.2	9.5	9.4	9.4	9.4	9.2	9.3
November	8.5	8.5	8.5	9.0	8.7	8.8	8.8	8.6	8.7
December	6.8	7.0	6.9	7.3	6.9	7.1	7.0	6.9	7.0

Source: Statistics Centre - Abu Dhabi

Table 4: Sex Ratio at Birth by Year and Citizenship, Abu Dhabi Emirate - 2001, 2005, 2009 and 2010

Year	Citizens	Non-Citizens	Total
2001	104.2	103.1	103.6
2005	105.2	107.2	106.3
2009	106.9	105.0	105.9
2010	102.3	106.1	104.4

Source: Statistics Centre - Abu Dhabi

Table 5: Crude Birth Rate (Per 1000 Population) by Citizenship, Abu Dhabi Emirate - 2001, 2005, 2009 and 2010

Citizenship	2001	2005	2009	2010
Total	20.79	19.73	15.91	15.01
Citizens	35.43	35.71	32.52	31.43
Non-Citizens	15.82	14.39	11.02	10.34

Source: Statistics Centre - Abu Dhabi

Table 6: Crude Birth Rate (Per 1000 Population) by Citizenship, Gender and Region, Abu Dhabi Emirate - 2010

Citizenship & Gender	Abu Dhabi	Al-Ain	Al Gharbia	Total
Total	14.9	18.6	5.3	15.0
Males	11.1	14.0	3.3	10.9
Females	23.6	27.7	16.5	24.6
Citizens	31.9	33.2	17.1	31.4
Males	32.3	33.6	16.1	31.7
Females	31.5	32.7	18.4	31.2
Non-Citizens	10.9	12.0	3.4	10.3
Males	7.7	8.0	2.0	7.0
Females	20.1	23.2	15.2	20.7

Source : Statistics Centre - Abu Dhabi

Table 7: Crude Birth Rate (Per 1000 Population) by Year, Region, Abu Dhabi Emirate - 2005, 2009 and 2010

Year	Abu Dhabi	Al-Ain	Al Gharbia	Total
2005	N.A.	N.A.	N.A.	19.73
2009	15.92	19.25	5.90	15.91
2010	14.95	18.58	5.31	15.01

Source: Statistics Centre - Abu Dhabi

Table 8: General Fertility Rate (Births Per 1000 women Aged 15-49 years) by Citizenship and Region, Abu Dhabi Emirate - 2010

Citizenship	Abu Dhabi	Al-Ain	Al Gharbia	Total
Total	77.46	91.12	56.15	80.67
Citizens Females	119.89	123.12	71.83	118.41
Non- Citizens Females	62.24	68.61	47.56	63.24

Source: Statistics Centre - Abu Dhabi

Table 9: General Fertility Rate (Births Per 1000 women Aged 15-49 years) by Year and Region, Abu Dhabi Emirate - 2005, 2009 and 2010

Year	Abu Dhabi	Al-Ain	Al Gharbia	Total
2005	N.A.	N.A.	N.A.	94.25
2009	79.76	94.15	58.29	83.20
2010	77.46	91.12	56.15	80.67

Source: Statistics Centre - Abu Dhabi

Explanatory Notes

Glossary

This report contains certain terms specific to Births and Fertility. They include the following terms:

Live Birth

A baby showing signs of life at birth. This is the completion of the process of extracting the pregnancy output from the mother's abdomen regardless of the gestation length, where the infant can breathe after this ablation or there appears on it any sign of life such as heartbeat, pulse of umbilical cord or a confirmed movement of the voluntary muscles, whether the placenta is still connected or not. Any output of this delivery is a live-birth.

Crude birth rate

The number of live births in a year per 1,000 mid-year population.

Sex ratio at birth

The number of male live-born per 100 female live births.

General fertility rate

The number of live births per 1,000 women aged 15-49.

Data sources

Data are obtained from HAAD. The data are processed and passed to Statistics Centre – Abu Dhabi for further editing and compilation.

Technical notes

Base Population: Population for Abu Dhabi Emirate and its regions are based on mid-year population estimates.

Occurrences and registrations: Births are based on place of registration and not by place of usual residence of mother.

Abbreviations used

CBR Crude Birth Rate

HAAD Health Authority – Abu Dhabi

GFR General Fertility Rate

SCAD Statistics Centre – Abu Dhabi

N.A. Not Available

Notes on tables

Changes (levels and per cent) in all tables are based on unrounded numbers.

Totals in some tables may not add up due to rounding.

Data for 2010 is updated by HAAD in January 2012

More information and next release

For more information about Births, Fertility and other official statistics, please visit the statistics link on the SCAD website at <http://www.scad.ae>

Further Fertility Indicators such as Total Fertility Rate (TFR), Age Specific Fertility rates are expected to release for the first time on 2013 and 2014.

The next release is expected in September 2011.

