

## 5. Labour Force

- Labour Force Structure
- Occupational Structure
- Unemployment
- Employment by Economic Activity

## 05. Labour Force

Due to the ongoing economic growth of Abu Dhabi, the Emirate has seen a significant increase in the labour force. The size of the labour force grew from 297,406 in 1985 to 815,311 in 2005, according to the results of the population censuses taken in those years. In 2011, the labour force was estimated to have been over 1.4 million, of which total figures for all citizens, males and females citizens are 132,000 and 94,500 and 37,500, respectively, while the corresponding figures for all non-citizens, and non-citizen males and females are 1,311,800, and 1,131,800 and 180,000, respectively. Of the total labour force 9.1% are citizens. Females make up 15.1% of the labour force.

### key Indicators

2011

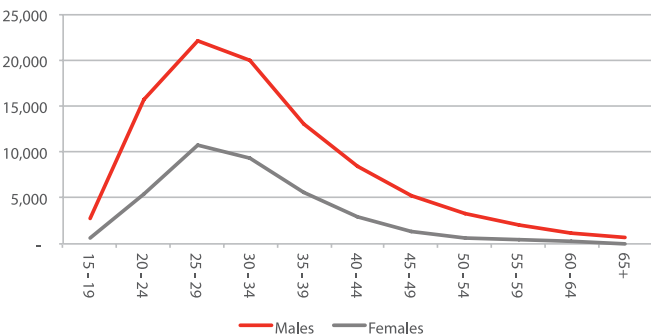
Percentage of the population in the labour force	68.1%
Females as a percentage of total labour force	15.1%
Economic Dependency Ratio	46.9%

### 5.1. Labour Force Structure

The Labour force comprises both employed and unemployed persons who are 15 years and older. The number of employed reached 786,738 in 2005 while it was 294,524 in 1985, according to the results of the population censuses taken in those years. SCAD's 2011 estimates shows that the number of employed is 1,403,400 people (15 years and older), and 8.3% of the employed are citizens and 14.0% are females.

The 2011 age structure of the labour force reveals that the age group 25 to 29 years represents the largest proportion in the total labour force with 24.7%, and among citizens the proportion in the age group 25 to 29 years is 24.9%.

**Figure 5.1.1. Citizens Labour Force Estimates (15 years and over) by Age Group and Gender, Mid 2011**



Source: Statistics Centre - Abu Dhabi

### 5.1.1. Labour Force by Employment Status and Citizenship, Census Years

Indicator	1985	1995	2001	2005
<b>Labour Force</b>	<b>297,406</b>	<b>532,881</b>	<b>676,547</b>	<b>815,311</b>
Citizens	22,358	43,183	71,651	85,838
Non-Citizens	275,048	489,698	604,896	729,473
<b>Employed</b>	<b>294,524</b>	<b>525,457</b>	<b>649,342</b>	<b>786,738</b>
Citizens	21,579	40,981	60,753	75,518
Non-Citizens	272,945	484,476	588,589	711,220
<b>Unemployed</b>	<b>2,882</b>	<b>7,424</b>	<b>27,205</b>	<b>28,573</b>
Citizens	779	2,202	10,898	10,320
Non-Citizens	2,103	5,222	16,307	18,253

Source: Ministry of Economy , Department of Economic Development

### 5.1.2. Average Annual Growth Rates in Labour Force in Intercensal Periods by Citizenship and Gender

(%)

Citizenship and Gender	1975-1985	1985 - 1995	1995 - 2005	2005 - 2011
<b>Total</b>	<b>9.1</b>	<b>6.0</b>	<b>4.4</b>	<b>10.8</b>
Males	8.5	5.9	3.7	10.7
Females	20.7	6.8	9.2	11.6
<b>Citizens</b>	<b>6.1</b>	<b>6.8</b>	<b>7.1</b>	<b>8.0</b>
Males	5.9	6.1	5.9	5.9
Females	13.5	16.9	14.4	14.9
<b>Non - Citizens</b>	<b>9.4</b>	<b>5.9</b>	<b>4.1</b>	<b>11.1</b>
Males	8.8	5.9	3.5	11.1
Females	21.1	6.1	8.6	11.0

Source: Statistics Centre - Abu Dhabi

### 5.1.3 Unemployment Rate by Citizenship and Gender, Census Years

(%)

Citizenship and Gender	1985	1995	2001	2005
<b>Total</b>	<b>1.0</b>	<b>1.4</b>	<b>4.0</b>	<b>3.5</b>
Males	0.8	1.3	2.8	2.8
Females	2.5	2.4	12.5	7.6
<b>Citizens</b>	<b>3.5</b>	<b>5.1</b>	<b>15.2</b>	<b>12.0</b>
Males	3.5	5.1	12.6	11.1
Females	4.2	4.9	26.6	15.5
<b>Non-Citizens</b>	<b>0.8</b>	<b>1.1</b>	<b>2.7</b>	<b>2.5</b>
Males	0.6	1.0	1.8	1.9
Females	2.4	2.1	9.8	6.3

Source: Statistics Centre - Abu Dhabi

**5.1.4. Total Labour Force Estimates (15 years and over) by Age Group, Citizenship and Gender, Mid 2011**

<b>Age Group / Citizenship</b>	<b>Males</b>	<b>Females</b>	<b>Total</b>
<b>Grand Total</b>	<b>1,226,300</b>	<b>217,500</b>	<b>1,443,700</b>
15 - 19	9,900	4,200	14,100
20 - 24	153,300	34,100	187,400
25 - 29	300,500	56,800	357,300
30 - 34	256,100	46,900	303,000
35 - 39	184,300	32,300	216,600
40 - 44	134,500	20,000	154,500
45 - 49	83,200	11,300	94,500
50 - 54	56,600	6,700	63,300
55 - 59	32,100	3,400	35,500
60 - 64	11,500	1,300	12,800
65+	4,300	400	4,700
<b>Citizens</b>	<b>94,500</b>	<b>37,500</b>	<b>132,000</b>
15 - 19	2,800	600	3,400
20 - 24	15,800	5,400	21,100
25 - 29	22,100	10,800	32,900
30 - 34	20,100	9,300	29,400
35 - 39	13,000	5,700	18,600
40 - 44	8,400	2,900	11,300
45 - 49	5,300	1,400	6,800
50 - 54	3,300	700	4,000
55 - 59	2,000	400	2,400
60 - 64	1,100	200	1,300
65+	700	0	700
<b>Non-Citizens</b>	<b>1,131,800</b>	<b>180,000</b>	<b>1,311,800</b>
15 - 19	7,000	3,600	10,600
20 - 24	137,600	28,700	166,300
25 - 29	278,400	46,000	324,400
30 - 34	236,000	37,600	273,700
35 - 39	171,300	26,600	198,000
40 - 44	126,100	17,100	143,100
45 - 49	77,800	9,900	87,800
50 - 54	53,300	6,000	59,300
55 - 59	30,100	3,100	33,200
60 - 64	10,500	1,000	11,500
65+	3,600	300	4,000

Source: Statistics Centre - Abu Dhabi

**5.1.5. Labour Force Estimates (15 years and over) by Age Group, Citizenship and Gender - Abu Dhabi, Mid 2011**

<b>Age Group / Citizenship</b>	<b>Males</b>	<b>Females</b>	<b>Total</b>
<b>Grand Total</b>	<b>750,300</b>	<b>141,000</b>	<b>891,300</b>
15 - 19	4,700	2,100	6,700
20 - 24	89,200	19,800	109,000
25 - 29	187,800	35,900	223,800
30 - 34	161,800	31,000	192,800
35 - 39	112,300	21,900	134,200
40 - 44	80,600	13,800	94,400
45 - 49	49,200	8,000	57,200
50 - 54	33,800	4,800	38,600
55 - 59	20,100	2,500	22,600
60 - 64	7,800	1,000	8,800
65+	3,000	300	3,300
<b>Citizens</b>	<b>51,200</b>	<b>21,400</b>	<b>72,600</b>
15 - 19	1,300	300	1,600
20 - 24	7,800	2,900	10,700
25 - 29	11,500	6,000	17,500
30 - 34	10,700	5,300	16,000
35 - 39	7,300	3,300	10,600
40 - 44	5,000	1,800	6,800
45 - 49	3,300	900	4,200
50 - 54	2,000	500	2,500
55 - 59	1,200	200	1,500
60 - 64	600	100	800
65+	400	0	400
<b>Non-Citizens</b>	<b>699,100</b>	<b>119,600</b>	<b>818,700</b>
15 - 19	3,400	1,800	5,100
20 - 24	81,400	16,900	98,300
25 - 29	176,300	29,900	206,200
30 - 34	151,000	25,800	176,800
35 - 39	105,000	18,600	123,600
40 - 44	75,600	12,000	87,600
45 - 49	45,900	7,100	53,000
50 - 54	31,800	4,300	36,100
55 - 59	18,900	2,300	21,200
60 - 64	7,200	800	8,000
65+	2,600	200	2,800

Source: Statistics Centre - Abu Dhabi

**5.1.6. Labour Force Estimates (15 years and over) by Age Group, Citizenship and Gender - Al Ain, Mid 2011**

<b>Age Group / Citizenship</b>	<b>Males</b>	<b>Females</b>	<b>Total</b>
<b>Grand Total</b>	<b>287,900</b>	<b>69,300</b>	<b>357,200</b>
15 - 19	3,600	1,900	5,500
20 - 24	40,200	12,800	53,000
25 - 29	66,800	19,100	85,800
30 - 34	56,400	14,500	70,900
35 - 39	43,100	9,500	52,600
40 - 44	32,300	5,600	37,800
45 - 49	20,600	3,000	23,600
50 - 54	13,900	1,700	15,600
55 - 59	7,600	800	8,400
60 - 64	2,500	300	2,800
65+	1,100	100	1,200
<b>Citizens</b>	<b>35,100</b>	<b>14,500</b>	<b>49,600</b>
15 - 19	1,300	300	1,600
20 - 24	6,500	2,100	8,600
25 - 29	8,500	4,300	12,800
30 - 34	7,400	3,700	11,100
35 - 39	4,700	2,200	6,800
40 - 44	2,800	1,000	3,800
45 - 49	1,600	500	2,100
50 - 54	1,000	200	1,200
55 - 59	600	100	700
60 - 64	400	100	500
65+	200	0	200
<b>Non-Citizens</b>	<b>252,800</b>	<b>54,800</b>	<b>307,600</b>
15 - 19	2,300	1,700	3,900
20 - 24	33,700	10,700	44,400
25 - 29	58,300	14,700	73,000
30 - 34	48,900	10,800	59,700
35 - 39	38,500	7,300	45,800
40 - 44	29,500	4,500	34,000
45 - 49	18,900	2,600	21,500
50 - 54	12,900	1,500	14,300
55 - 59	6,900	700	7,600
60 - 64	2,200	200	2,400
65+	800	100	900

Source: Statistics Centre - Abu Dhabi

**5.1.7. Labour Force Estimates (15 years and over) by Age Group, Citizenship and Gender - AL Gharbia, Mid 2011**

<b>Age Group / Citizenship</b>	<b>Males</b>	<b>Females</b>	<b>Total</b>
<b>Grand Total</b>	<b>188,000</b>	<b>7,200</b>	<b>195,200</b>
15 - 19	1,600	200	1,800
20 - 24	23,900	1,400	25,400
25 - 29	45,900	1,800	47,700
30 - 34	38,000	1,400	39,400
35 - 39	28,800	1,000	29,800
40 - 44	21,600	600	22,200
45 - 49	13,400	300	13,700
50 - 54	9,000	200	9,200
55 - 59	4,400	100	4,500
60 - 64	1,100	0	1,200
65+	300	0	300
<b>Citizens</b>	<b>8,100</b>	<b>1,600</b>	<b>9,700</b>
15 - 19	200	0	300
20 - 24	1,400	400	1,800
25 - 29	2,100	500	2,600
30 - 34	1,900	400	2,200
35 - 39	1,000	200	1,200
40 - 44	600	100	700
45 - 49	400	0	500
50 - 54	300	0	300
55 - 59	200	0	200
60 - 64	100	0	100
65+	0	0	0
<b>Non-Citizens</b>	<b>179,900</b>	<b>5,600</b>	<b>185,500</b>
15 - 19	1,400	200	1,600
20 - 24	22,500	1,100	23,600
25 - 29	43,800	1,400	45,200
30 - 34	36,100	1,000	37,100
35 - 39	27,900	800	28,600
40 - 44	21,000	500	21,600
45 - 49	13,000	300	13,300
50 - 54	8,700	200	8,900
55 - 59	4,300	100	4,300
60 - 64	1,100	0	1,100
65+	200	0	200

Source: Statistics Centre - Abu Dhabi



**5.1.8. Estimates of Total Employed (15 years and over) by Age Group, Citizenship and Gender, Mid 2011**

<b>Age Group / Citizenship</b>	<b>Males</b>	<b>Females</b>	<b>Total</b>
<b>Grand Total</b>	<b>1,207,200</b>	<b>196,200</b>	<b>1,403,400</b>
15 - 19	7,700	3,000	10,700
20 - 24	148,600	28,900	177,500
25 - 29	296,900	51,700	348,600
30 - 34	253,800	43,700	297,500
35 - 39	182,600	30,200	212,800
40 - 44	133,100	18,500	151,600
45 - 49	82,200	10,300	92,400
50 - 54	55,800	5,900	61,600
55 - 59	31,400	2,800	34,200
60 - 64	10,900	900	11,700
65+	4,300	400	4,700
<b>Citizens</b>	<b>87,700</b>	<b>28,700</b>	<b>116,400</b>
15 - 19	1,800	100	1,900
20 - 24	13,800	2,900	16,700
25 - 29	20,800	8,400	29,200
30 - 34	19,200	8,000	27,200
35 - 39	12,500	5,000	17,400
40 - 44	8,100	2,400	10,500
45 - 49	5,100	1,100	6,200
50 - 54	3,100	500	3,600
55 - 59	1,800	200	2,000
60 - 64	900	100	1,000
65+	700	0	700
<b>Non-Citizens</b>	<b>1,119,600</b>	<b>167,500</b>	<b>1,287,000</b>
15 - 19	5,900	2,900	8,800
20 - 24	134,800	26,000	160,800
25 - 29	276,200	43,200	319,400
30 - 34	234,600	35,700	270,300
35 - 39	170,100	25,300	195,400
40 - 44	125,000	16,100	141,100
45 - 49	77,100	9,100	86,200
50 - 54	52,700	5,400	58,100
55 - 59	29,500	2,600	32,100
60 - 64	10,000	800	10,700
65+	3,600	300	4,000

Source: Statistics Centre - Abu Dhabi

**5.1.9. Estimates of Total Employed (15 years and over) by Age Group, Citizenship and Gender - Abu Dhabi, Mid 2011**

<b>Age Group / Citizenship</b>	<b>Males</b>	<b>Females</b>	<b>Total</b>
<b>Grand Total</b>	<b>740,200</b>	<b>128,200</b>	<b>868,400</b>
15 - 19	3,700	1,500	5,200
20 - 24	86,800	17,000	103,800
25 - 29	185,900	33,100	219,000
30 - 34	160,500	29,100	189,600
35 - 39	111,300	20,500	131,800
40 - 44	79,900	12,700	92,600
45 - 49	48,600	7,200	55,800
50 - 54	33,300	4,200	37,500
55 - 59	19,700	2,100	21,800
60 - 64	7,500	700	8,100
65+	3,000	300	3,300
<b>Citizens</b>	<b>47,800</b>	<b>17,600</b>	<b>65,300</b>
15 - 19	800	100	900
20 - 24	6,900	1,900	8,800
25 - 29	10,900	5,100	15,900
30 - 34	10,200	4,700	15,000
35 - 39	7,000	3,000	10,000
40 - 44	4,800	1,500	6,300
45 - 49	3,100	800	3,900
50 - 54	1,900	300	2,200
55 - 59	1,100	100	1,300
60 - 64	600	100	600
65+	400	0	400
<b>Non-Citizens</b>	<b>692,400</b>	<b>110,700</b>	<b>803,100</b>
15 - 19	2,900	1,400	4,300
20 - 24	79,900	15,100	95,000
25 - 29	175,100	28,000	203,100
30 - 34	150,200	24,400	174,600
35 - 39	104,300	17,500	121,800
40 - 44	75,000	11,200	86,200
45 - 49	45,500	6,400	52,000
50 - 54	31,400	3,900	35,300
55 - 59	18,600	1,900	20,500
60 - 64	6,900	600	7,500
65+	2,600	200	2,800

Source: Statistics Centre - Abu Dhabi

**5.1.10. Estimates of Total Employed (15 years and over) by Age Group, Citizenship and Gender - Al Ain, Mid 2011**

<b>Age Group / Citizenship</b>	<b>Males</b>	<b>Females</b>	<b>Total</b>
<b>Grand Total</b>	<b>279,900</b>	<b>61,600</b>	<b>341,500</b>
15 - 19	2,600	1,400	4,000
20 - 24	38,100	10,700	48,900
25 - 29	65,300	16,900	82,200
30 - 34	55,400	13,300	68,700
35 - 39	42,500	8,900	51,400
40 - 44	31,700	5,200	36,900
45 - 49	20,200	2,700	23,000
50 - 54	13,500	1,500	15,000
55 - 59	7,200	700	7,900
60 - 64	2,300	200	2,500
65+	1,100	100	1,200
<b>Citizens</b>	<b>32,200</b>	<b>10,000</b>	<b>42,200</b>
15 - 19	800	100	900
20 - 24	5,600	800	6,500
25 - 29	7,900	3,000	10,900
30 - 34	7,100	3,000	10,100
35 - 39	4,500	1,800	6,300
40 - 44	2,700	800	3,500
45 - 49	1,600	300	1,900
50 - 54	900	100	1,100
55 - 59	600	0	600
60 - 64	300	0	300
65+	200	0	200
<b>Non-Citizens</b>	<b>247,700</b>	<b>51,600</b>	<b>299,300</b>
15 - 19	1,800	1,400	3,100
20 - 24	32,500	9,900	42,400
25 - 29	57,400	13,900	71,300
30 - 34	48,300	10,400	58,700
35 - 39	38,000	7,100	45,100
40 - 44	29,000	4,300	33,400
45 - 49	18,700	2,400	21,100
50 - 54	12,600	1,300	13,900
55 - 59	6,700	600	7,300
60 - 64	2,000	100	2,100
65+	800	100	900

Source: Statistics Centre - Abu Dhabi

**5.1.11. Estimates of Total Employed (15 years and over) by Age Group, Citizenship and Gender - Al Gharbia , Mid 2011**

<b>Age Group / Citizenship</b>	<b>Males</b>	<b>Females</b>	<b>Total</b>
<b>Grand Total</b>	<b>187,100</b>	<b>6,400</b>	<b>193,500</b>
15 - 19	1,400	200	1,600
20 - 24	23,700	1,200	24,900
25 - 29	45,700	1,700	47,400
30 - 34	37,900	1,300	39,200
35 - 39	28,800	900	29,700
40 - 44	21,500	600	22,100
45 - 49	13,300	300	13,600
50 - 54	8,900	200	9,100
55 - 59	4,400	100	4,500
60 - 64	1,100	0	1,100
65+	300	0	300
<b>Citizens</b>	<b>7,700</b>	<b>1,200</b>	<b>8,800</b>
15 - 19	100	0	100
20 - 24	1,300	200	1,500
25 - 29	2,000	400	2,400
30 - 34	1,900	300	2,200
35 - 39	1,000	200	1,100
40 - 44	600	100	600
45 - 49	400	0	400
50 - 54	300	0	300
55 - 59	100	0	100
60 - 64	100	0	100
65+	0	0	0
<b>Non-Citizens</b>	<b>179,400</b>	<b>5,200</b>	<b>184,600</b>
15 - 19	1,300	100	1,500
20 - 24	22,400	1,000	23,400
25 - 29	43,700	1,300	45,000
30 - 34	36,000	1,000	37,000
35 - 39	27,800	700	28,500
40 - 44	21,000	500	21,500
45 - 49	12,900	300	13,200
50 - 54	8,700	200	8,800
55 - 59	4,200	100	4,300
60 - 64	1,100	0	1,100
65+	200	0	200

Source: Statistics Centre - Abu Dhabi

**5.1.12. Percentage of Employed Population (15 years and Over) by Age Group, Citizenship and Gender, Mid 2011**

(%)

<b>Age Group / Citizenship</b>	<b>Males</b>	<b>Females</b>	<b>Total</b>
<b>Grand Total</b>	<b>100.0</b>	<b>100.0</b>	<b>100.0</b>
15 - 19	0.6	1.5	0.8
20 - 24	12.3	14.7	12.7
25 - 29	24.6	26.3	24.8
30 - 34	21.0	22.3	21.2
35 - 39	15.1	15.4	15.2
40 - 44	11.0	9.4	10.8
45 - 49	6.8	5.2	6.6
50 - 54	4.6	3.0	4.4
55 - 59	2.6	1.4	2.4
60 - 64	0.9	0.4	0.8
65+	0.4	0.2	0.3
<b>Citizens</b>	<b>100.0</b>	<b>100.0</b>	<b>100.0</b>
15 - 19	2.0	0.4	1.6
20 - 24	15.8	10.1	14.4
25 - 29	23.7	29.3	25.1
30 - 34	21.9	27.8	23.4
35 - 39	14.2	17.3	15.0
40 - 44	9.2	8.4	9.0
45 - 49	5.8	3.9	5.3
50 - 54	3.5	1.7	3.1
55 - 59	2.1	0.6	1.7
60 - 64	1.0	0.3	0.9
65+	0.7	0.2	0.6
<b>Non- Citizens</b>	<b>100.0</b>	<b>100.0</b>	<b>100.0</b>
15 - 19	0.5	1.7	0.7
20 - 24	12.0	15.5	12.5
25 - 29	24.7	25.8	24.8
30 - 34	21.0	21.3	21.0
35 - 39	15.2	15.1	15.2
40 - 44	11.2	9.6	11.0
45 - 49	6.9	5.5	6.7
50 - 54	4.7	3.2	4.5
55 - 59	2.6	1.6	2.5
60 - 64	0.9	0.5	0.8
65+	0.3	0.2	0.3

Source: Statistics Centre - Abu Dhabi

**5.1.13. Percentage of Employed Population ( 15 years and Over) by Age Group, Citizenship and Gender - Abu Dhabi , Mid 2011**

(%)

<b>Age Group / Citizenship</b>	<b>Males</b>	<b>Females</b>	<b>Total</b>
<b>Grand Total</b>	<b>100.0</b>	<b>100.0</b>	<b>100.0</b>
15 - 19	0.5	1.1	0.6
20 - 24	11.7	13.2	11.9
25 - 29	25.1	25.8	25.2
30 - 34	21.7	22.7	21.8
35 - 39	15.0	16.0	15.2
40 - 44	10.8	9.9	10.7
45 - 49	6.6	5.6	6.4
50 - 54	4.5	3.3	4.3
55 - 59	2.7	1.6	2.5
60 - 64	1.0	0.5	0.9
65+	0.4	0.2	0.4
<b>Citizens</b>	<b>100.0</b>	<b>100.0</b>	<b>100.0</b>
15 - 19	1.7	0.4	1.4
20 - 24	14.5	10.8	13.5
25 - 29	22.7	29.0	24.4
30 - 34	21.4	26.9	22.9
35 - 39	14.7	16.9	15.3
40 - 44	10.1	8.5	9.7
45 - 49	6.5	4.3	5.9
50 - 54	3.9	2.0	3.4
55 - 59	2.4	0.7	1.9
60 - 64	1.2	0.3	0.9
65+	0.8	0.2	0.7
<b>Non-Citizens</b>	<b>100.0</b>	<b>100.0</b>	<b>100.0</b>
15 - 19	0.4	1.3	0.5
20 - 24	11.5	13.6	11.8
25 - 29	25.3	25.3	25.3
30 - 34	21.7	22.0	21.7
35 - 39	15.1	15.8	15.2
40 - 44	10.8	10.1	10.7
45 - 49	6.6	5.8	6.5
50 - 54	4.5	3.5	4.4
55 - 59	2.7	1.7	2.6
60 - 64	1.0	0.6	0.9
65+	0.4	0.2	0.4

Source: Statistics Centre - Abu Dhabi

**5.1.14. Percentage of Employed Population (15 years and Over) by Age Group, Citizenship and Gender - Al Ain, Mid 2011**

(%)

<b>Age Group / Citizenship</b>	<b>Males</b>	<b>Females</b>	<b>Total</b>
<b>Grand Total</b>	<b>100.0</b>	<b>100.0</b>	<b>100.0</b>
15 - 19	0.9	2.3	1.2
20 - 24	13.6	17.4	14.3
25 - 29	23.3	27.4	24.1
30 - 34	19.8	21.6	20.1
35 - 39	15.2	14.4	15.0
40 - 44	11.3	8.4	10.8
45 - 49	7.2	4.5	6.7
50 - 54	4.8	2.4	4.4
55 - 59	2.6	1.1	2.3
60 - 64	0.8	0.3	0.7
65+	0.4	0.2	0.3
<b>Citizens</b>	<b>100.0</b>	<b>100.0</b>	<b>100.0</b>
15 - 19	2.5	0.5	2.0
20 - 24	17.5	8.1	15.3
25 - 29	24.6	29.8	25.8
30 - 34	22.1	29.6	23.9
35 - 39	13.9	18.4	14.9
40 - 44	8.3	8.4	8.3
45 - 49	4.8	3.2	4.4
50 - 54	2.9	1.2	2.5
55 - 59	1.7	0.5	1.4
60 - 64	0.9	0.2	0.8
65+	0.7	0.1	0.6
<b>Non-Citizens</b>	<b>100.0</b>	<b>100.0</b>	<b>100.0</b>
15 - 19	0.7	2.6	1.0
20 - 24	13.1	19.2	14.2
25 - 29	23.2	27.0	23.8
30 - 34	19.5	20.1	19.6
35 - 39	15.3	13.7	15.1
40 - 44	11.7	8.4	11.2
45 - 49	7.5	4.7	7.0
50 - 54	5.1	2.6	4.7
55 - 59	2.7	1.2	2.4
60 - 64	0.8	0.3	0.7
65+	0.3	0.2	0.3

Source: Statistics Centre - Abu Dhabi

**5.1.15. Percentage of Employed Population (15 years and Over) by Age Group, Citizenship and Gender - AL Gharbia, Mid 2011**

<b>Age Group / Citizenship</b>	<b>Males</b>	<b>Females</b>	<b>Total</b>
<b>Grand Total</b>	<b>100.0</b>	<b>100.0</b>	<b>100.0</b>
15 - 19	0.8	2.4	0.8
20 - 24	12.7	18.8	12.9
25 - 29	24.4	25.9	24.5
30 - 34	20.3	20.2	20.3
35 - 39	15.4	14.0	15.3
40 - 44	11.5	9.3	11.4
45 - 49	7.1	4.7	7.0
50 - 54	4.8	2.8	4.7
55 - 59	2.3	1.4	2.3
60 - 64	0.6	0.2	0.6
65+	0.1	0.2	0.1
<b>Citizens</b>	<b>100.0</b>	<b>100.0</b>	<b>100.0</b>
15 - 19	1.5	0.8	1.4
20 - 24	16.8	17.2	16.9
25 - 29	26.0	31.4	26.7
30 - 34	24.3	24.8	24.3
35 - 39	12.6	14.0	12.8
40 - 44	7.3	6.6	7.2
45 - 49	5.3	3.2	5.0
50 - 54	3.4	1.1	3.1
55 - 59	1.8	0.6	1.7
60 - 64	0.7	0.2	0.6
65+	0.3	0.2	0.3
<b>Non-Citizens</b>	<b>100.0</b>	<b>100.0</b>	<b>100.0</b>
15 - 19	0.7	2.8	0.8
20 - 24	12.5	19.1	12.7
25 - 29	24.4	24.7	24.4
30 - 34	20.1	19.2	20.1
35 - 39	15.5	14.1	15.5
40 - 44	11.7	9.9	11.6
45 - 49	7.2	5.0	7.1
50 - 54	4.8	3.2	4.8
55 - 59	2.4	1.5	2.3
60 - 64	0.6	0.2	0.6
65+	0.1	0.2	0.1

Source: Statistics Centre - Abu Dhabi

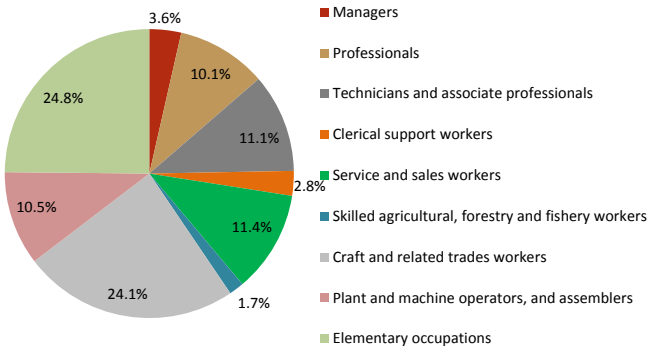


## 5.2. Occupational Structure

Among the employed population the largest proportion had their main occupation classified as Elementary occupations 24.8%, closely followed by Craft and related trades workers with 24.1%, and then Service and sales workers 11.4%, Technicians and associate professionals 11.1%, Plant and machine operators, and assemblers 10.5%, with 18.1% in all the other occupational categories.

For citizens, however, the main occupational category accounting for largest proportion of the employed population is that of Technicians and Associated professionals 38.5%, followed by Service and sales workers 22.0%, Professionals 18.0% and other occupational categories in considerably smaller proportion totaling 21.3%

**Percentage Distribution of Estimated Employed Population (15 years and over) by Main Occupation, Mid 2011**



Source: Statistics Centre - Abu Dhabi

### 5.2.1. Estimated Employed Population (15 years and over) by Main Occupation and Gender, Mid 2011

Main Occupation	Males	Females	Total
<b>Total</b>	<b>1,207,200</b>	<b>196,200</b>	<b>1,403,400</b>
Managers	43,600	6,300	49,900
Professionals	101,600	40,000	141,600
Technicians and associate professionals	132,500	22,700	155,200
Clerical support workers	27,300	11,600	38,900
Service and sales workers	123,200	36,700	159,900
Skilled agricultural, forestry and fishery workers	23,300	0	23,300
Craft and related trades workers	336,900	1,300	338,200
Plant and machine operators, and assemblers	144,400	3,300	147,800
Elementary occupations	274,400	74,200	348,700

Source: Statistics Centre - Abu Dhabi

### 5.2.2. Occupation Distribution of Estimated Employed Population (15 years and over) by Gender, Mid 2011

(%)

Main Occupation	Males	Females	Total
<b>Total</b>	<b>100.0</b>	<b>100.0</b>	<b>100.0</b>
Managers	3.6	3.2	3.6
Professionals	8.4	20.4	10.1
Technicians and associate professionals	11.0	11.6	11.1
Clerical support workers	2.3	5.9	2.8
Service and sales workers	10.2	18.7	11.4
Skilled agricultural, forestry and fishery workers	1.9	0.0	1.7
Craft and related trades workers	27.9	0.7	24.1
Plant and machine operators, and assemblers	12.0	1.7	10.5
Elementary occupations	22.7	37.8	24.8

Source: Statistics Centre - Abu Dhabi

### 5.2.3. Estimated Employed Citizens (15 years and over) by Main Occupation and Gender, Mid 2011

Main Occupation	Males	Females	Total
<b>Total</b>	<b>87,700</b>	<b>28,700</b>	<b>116,400</b>
Managers	8,800	1,900	10,700
Professionals	11,400	9,600	21,000
Technicians and associate professionals	33,500	11,400	44,900
Clerical support workers	3,700	3,300	7,000
Service and sales workers	23,500	2,100	25,600
Skilled agricultural, forestry and fishery workers	200	-	200
Craft and related trades workers	2,600	100	2,600
Plant and machine operators, and assemblers	2,400	-	2,400
Elementary occupations	1,700	300	2,000

Source: Statistics Centre - Abu Dhabi

### 5.2.4. Occupation Distribution of Estimated Employed Citizens (15 years and over) by Gender, Mid 2011

(%)

Main Occupation	Males	Females	Total
<b>Total</b>	<b>100.0</b>	<b>100.0</b>	<b>100.0</b>
Managers	10.0	6.7	9.2
Professionals	13.0	33.4	18.0
Technicians and associate professionals	38.2	39.5	38.5
Clerical support workers	4.2	11.6	6.0
Service and sales workers	26.8	7.5	22.0
Skilled agricultural, forestry and fishery workers	0.2	0.0	0.1
Craft and related trades workers	2.9	0.2	2.2
Plant and machine operators, and assemblers	2.7	0.2	2.1
Elementary occupations	1.9	0.9	1.7

Source: Statistics Centre - Abu Dhabi

### 5.2.5. Estimated Employed Non-Citizens (15 years and over) by Main Occupation and Gender, Mid 2011

Main Occupation	Males	Females	Total
<b>Total</b>	<b>1,119,600</b>	<b>167,500</b>	<b>1,287,000</b>
Managers	34,800	4,400	39,200
Professionals	90,200	30,400	120,600
Technicians and associate professionals	99,000	11,300	110,300
Clerical support workers	23,600	8,200	31,900
Service and sales workers	99,700	34,600	134,300
Skilled agricultural, forestry and fishery workers	23,100	-	23,200
Craft and related trades workers	334,300	1,200	335,600
Plant and machine operators, and assemblers	142,000	3,300	145,300
Elementary occupations	272,700	74,000	346,700

Source: Statistics Centre - Abu Dhabi

### 5.2.6. Occupation Distribution of Estimated Employed Non-Citizens (15 years and over) by Gender, Mid 2011

(%)

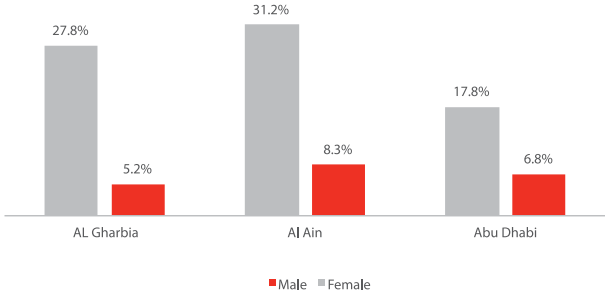
Main Occupation	Males	Females	Total
<b>Total</b>	<b>100.0</b>	<b>100.0</b>	<b>100.0</b>
Managers	3.1	2.6	3.0
Professionals	8.1	18.1	9.4
Technicians and associate professionals	8.8	6.8	8.6
Clerical support workers	2.1	4.9	2.5
Service and sales workers	8.9	20.7	10.4
Skilled agricultural, forestry and fishery workers	2.1	0.0	1.8
Craft and related trades workers	29.9	0.7	26.1
Plant and machine operators, and assemblers	12.7	2.0	11.3
Elementary occupations	24.4	44.2	26.9

Source: Statistics Centre - Abu Dhabi

### 5.3. Unemployment

The estimated unemployed population reached 40,300 people in 2011, an increase from 28,573 people in 2005. Some 38.7% of the unemployed are citizens, and 52.8% are females. The age group 20 to 24 years represents the largest portion of the unemployed at 24.3%. This finding applies to citizens and non-citizens, males and females. For the unemployed, holders of university degrees represent the largest proportion with 27.6%, followed by secondary school certificates 27.3%, whereas those with over secondary and below university (11.6%) and other educational categories represent smaller proportions. The 2011 unemployment rates among citizens, non-citizens and the total labour force were 11.8%, 1.9% and 2.8% respectively.

**Figure 5.3.1. Estimates of Unemployment Rate for Citizens by Region and Gender, Mid-2011**



Source: Statistics Centre - Abu Dhabi

**5.3.1. Estimates of Total Unemployed (15-64 Years) by Region, Citizenship and Gender, Mid-2011**

<b>Citizenship/Gender</b>	<b>Abu Dhabi</b>	<b>Al Ain</b>	<b>Al Gharbia</b>	<b>Total</b>
<b>Total</b>	<b>22,900</b>	<b>15,700</b>	<b>1,700</b>	<b>40,300</b>
Males	10,100	8,000	900	19,000
Females	12,800	7,700	800	21,300
<b>Citizens</b>	<b>7,300</b>	<b>7,400</b>	<b>900</b>	<b>15,600</b>
Males	3,500	2,900	400	6,800
Females	3,800	4,500	400	8,800
<b>Non-Citizens</b>	<b>15,600</b>	<b>8,300</b>	<b>800</b>	<b>24,700</b>
Males	6,700	5,100	500	12,200
Females	8,900	3,200	400	12,500

Source: Statistics Centre - Abu Dhabi

**5.3.2. Estimates of Total Unemployed (15- 64 years) by Age Group, Citizenship and Gender, Mid- 2011**

<b>Age Group / Citizenship</b>	<b>Males</b>	<b>Females</b>	<b>Total</b>
<b>Grand Total</b>	<b>19,000</b>	<b>21,300</b>	<b>40,300</b>
15 - 19	2,100	1,200	3,400
20 - 24	4,700	5,200	9,800
25 - 29	3,500	5,100	8,700
30 - 34	2,300	3,200	5,500
35 - 39	1,700	2,100	3,800
40 - 44	1,400	1,500	2,900
45 - 49	1,000	1,100	2,100
50 - 54	900	800	1,700
55 - 59	800	600	1,400
60 - 64	600	400	1,100
<b>Citizens</b>	<b>6,800</b>	<b>8,800</b>	<b>15,600</b>
15 - 19	1,100	500	1,500
20 - 24	1,900	2,500	4,400
25 - 29	1,300	2,400	3,700
30 - 34	800	1,300	2,200
35 - 39	500	700	1,200
40 - 44	400	500	800
45 - 49	300	300	600
50 - 54	200	300	500
55 - 59	200	200	400
60 - 64	100	200	300
<b>Non-Citizens</b>	<b>12,200</b>	<b>12,500</b>	<b>24,700</b>
15 - 19	1,100	700	1,800
20 - 24	2,800	2,700	5,500
25 - 29	2,200	2,800	5,000
30 - 34	1,500	1,900	3,400
35 - 39	1,200	1,400	2,600
40 - 44	1,000	1,000	2,000
45 - 49	700	800	1,500
50 - 54	700	600	1,200
55 - 59	600	400	1,000
60 - 64	500	300	700

Source: Statistics Centre - Abu Dhabi

**5.3.3. Estimates of Unemployed (15- 64 years) by Age Group, Citizenship and Gender - Abu Dhabi, Mid 2011**

<b>Age Group / Citizenship</b>	<b>Males</b>	<b>Females</b>	<b>Total</b>
<b>Grand Total</b>	<b>10,100</b>	<b>12,800</b>	<b>22,900</b>
15 - 19	1,000	600	1,600
20 - 24	2,400	2,800	5,200
25 - 29	1,900	2,800	4,700
30 - 34	1,300	1,900	3,200
35 - 39	1,000	1,400	2,400
40 - 44	800	1,000	1,800
45 - 49	600	800	1,400
50 - 54	500	600	1,100
55 - 59	400	400	800
60 - 64	400	300	700
<b>Citizens</b>	<b>3,500</b>	<b>3,800</b>	<b>7,300</b>
15 - 19	500	200	700
20 - 24	900	1,000	1,900
25 - 29	700	900	1,600
30 - 34	500	500	1,000
35 - 39	300	300	600
40 - 44	200	300	500
45 - 49	200	200	300
50 - 54	100	200	300
55 - 59	100	100	200
60 - 64	100	100	200
<b>Non-Citizens</b>	<b>6,700</b>	<b>8,900</b>	<b>15,600</b>
15 - 19	500	400	900
20 - 24	1,500	1,800	3,300
25 - 29	1,300	1,900	3,200
30 - 34	800	1,400	2,200
35 - 39	700	1,100	1,800
40 - 44	600	800	1,300
45 - 49	400	600	1,000
50 - 54	300	400	800
55 - 59	300	300	700
60 - 64	300	200	500

Source: Statistics Centre - Abu Dhabi



**5.3.4. Estimates of Unemployed (15- 64 years) by Age Group, Citizenship and Gender - Al Ain, Mid 2011**

<b>Age Group / Citizenship</b>	<b>Males</b>	<b>Females</b>	<b>Total</b>
<b>Grand Total</b>	<b>8,000</b>	<b>7,700</b>	<b>15,700</b>
15 - 19	1,000	500	1,600
20 - 24	2,000	2,100	4,100
25 - 29	1,500	2,100	3,700
30 - 34	900	1,200	2,100
35 - 39	700	600	1,300
40 - 44	500	400	900
45 - 49	400	300	600
50 - 54	300	200	600
55 - 59	300	200	500
60 - 64	200	100	400
<b>Citizens</b>	<b>2,900</b>	<b>4,500</b>	<b>7,400</b>
15 - 19	500	200	700
20 - 24	900	1,300	2,200
25 - 29	600	1,400	1,900
30 - 34	300	700	1,100
35 - 39	200	300	500
40 - 44	100	200	300
45 - 49	100	100	200
50 - 54	100	100	200
55 - 59	100	100	100
60 - 64	100	100	100
<b>Non-Citizens</b>	<b>5,100</b>	<b>3,200</b>	<b>8,300</b>
15 - 19	500	300	800
20 - 24	1,200	800	2,000
25 - 29	900	800	1,700
30 - 34	600	400	1,000
35 - 39	500	300	700
40 - 44	400	200	600
45 - 49	300	200	400
50 - 54	300	100	400
55 - 59	200	100	300
60 - 64	200	100	200

Source: Statistics Centre - Abu Dhabi

**5.3.5. Estimates of Unemployed (15- 64 years) Age Group, Citizenship and Gender - Al Gharbia, Mid 2011**

<b>Age Group / Citizenship</b>	<b>Males</b>	<b>Females</b>	<b>Total</b>
<b>Grand Total</b>	<b>900</b>	<b>800</b>	<b>1,700</b>
15 - 19	100	100	200
20 - 24	200	300	500
25 - 29	100	200	300
30 - 34	100	100	200
35 - 39	100	100	100
40 - 44	100	0	100
45 - 49	100	0	100
50 - 54	100	0	100
55 - 59	0	0	100
60 - 64	0	0	0
<b>Citizens</b>	<b>400</b>	<b>400</b>	<b>900</b>
15 - 19	100	0	100
20 - 24	100	200	300
25 - 29	100	100	200
30 - 34	0	100	100
35 - 39	0	0	100
40 - 44	0	0	0
45 - 49	0	0	0
50 - 54	0	0	0
55 - 59	0	0	0
60 - 64	0	0	0
<b>Non-Citizens</b>	<b>500</b>	<b>400</b>	<b>800</b>
15 - 19	100	0	100
20 - 24	100	100	200
25 - 29	0	100	100
30 - 34	0	0	100
35 - 39	100	0	100
40 - 44	100	0	100
45 - 49	100	0	100
50 - 54	0	0	100
55 - 59	0	0	0
60 - 64	0	0	0

Source: Statistics Centre - Abu Dhabi

### 5.3.6. Estimated Unemployed Population (15- 64 years) by Educational Status and Gender, Mid 2011

Educational Status	Males	Females	Total
<b>Total</b>	<b>19,000</b>	<b>21,300</b>	<b>40,300</b>
Illiterate	1400	1000	2400
Read and write	1500	900	2400
Primary cycle 1	2100	1000	3100
Preparatory cycle 2	2200	1000	3100
Secondary	5700	5300	11000
Over secondary below uni	1700	3000	4700
University	3600	7500	11100
Higher diploma	300	700	1100
Master	300	900	1200
Ph.D.	100	100	200

Source: Statistics Centre - Abu Dhabi

### 5.3.7. Percentage Distribution of the Emirate Unemployed Population (15- 64 years) by Educational Status and Gender, Mid 2011

(%)

Educational Status	Males	Females	Total
<b>Total</b>	<b>100.0</b>	<b>100.0</b>	<b>100.0</b>
Illiterate	7.5	4.5	5.9
Read and write	7.9	4.1	5.9
Primary cycle 1	11.2	4.7	7.8
Preparatory cycle 2	11.3	4.6	7.8
Secondary	30.1	24.9	27.3
Over secondary below uni	9.1	13.9	11.6
University	19.0	35.2	27.6
Higher diploma	1.7	3.5	2.7
Master	1.8	4.0	3.0
Ph.D.	0.4	0.5	0.4

Source: Statistics Centre - Abu Dhabi

### 5.3.8. Estimated Unemployed Citizens (15- 64 years) by Educational Status and Gender, Mid 2011

Educational Status	Males	Females	Total
<b>Total</b>	<b>6,800</b>	<b>8,800</b>	<b>15,600</b>
Illiterate	400	500	900
Read and write	500	400	900
Primary cycle 1	1000	600	1600
Preparatory cycle 2	1000	500	1600
Secondary	2400	2700	5100
Over secondary below uni	600	1300	1800
University	700	2500	3100
Higher diploma	100	300	400
Master	0	100	100
Ph.D.	0	0	0

Source: Statistics Centre - Abu Dhabi

### 5.3.9. Percentage Distribution of the Emirate Unemployed Citizens (15- 64 years) by Educational Status and Gender, Mid 2011

(%)

Educational Status	Males	Females	Total
<b>Total</b>	<b>100.0</b>	<b>100.0</b>	<b>100.0</b>
Illiterate	6.1	6.0	6.0
Read and write	7.0	4.8	5.7
Primary cycle 1	15.1	6.3	10.2
Preparatory cycle 2	15.4	6.2	10.2
Secondary	35.8	30.3	32.7
Over secondary below uni	8.4	14.3	11.8
University	10.0	27.9	20.1
Higher diploma	1.2	3.3	2.4
Master	0.7	0.8	0.8
Ph.D.	0.1	0.2	0.1

Source: Statistics Centre - Abu Dhabi

**5.3.10. Estimated Unemployed Non-Citizens (15-64 years) by Educational Status and Gender, Mid 2011**

<b>Educational Status</b>	<b>Males</b>	<b>Females</b>	<b>Total</b>
<b>Total</b>	<b>12,200</b>	<b>12,500</b>	<b>24,700</b>
Illiterate	1000	400	1400
Read and write	1000	400	1500
Primary cycle 1	1100	400	1600
Preparatory cycle 2	1100	400	1600
Secondary	3300	2600	5900
Over secondary below uni	1100	1700	2900
University	2900	5000	8000
Higher diploma	200	500	700
Master	300	800	1100
Ph.D.	100	100	100

Source: Statistics Centre - Abu Dhabi

**5.3.11. Percentage Distribution of Unemployed Non-Citizens (15-64 years) by Educational Status and Gender, Mid 2011**

(%)

<b>Educational Status</b>	<b>Males</b>	<b>Females</b>	<b>Total</b>
<b>Total</b>	<b>100.0</b>	<b>100.0</b>	<b>100.0</b>
Illiterate	8.3	3.5	5.9
Read and write	8.5	3.6	6.0
Primary cycle 1	9.1	3.5	6.3
Preparatory cycle 2	9.1	3.5	6.3
Secondary	26.9	21.1	24.0
Over secondary below uni	9.4	13.7	11.6
University	24.0	40.4	32.3
Higher diploma	2.0	3.7	2.8
Master	2.4	6.3	4.4
Ph.D.	0.5	0.7	0.6

Source: Statistics Centre - Abu Dhabi

## 5.4. Employment by Economic Activity

The 2011 distribution of employed population by main economic activity shows that the Construction represents the economic activity category accounting for the largest proportion of the employed population with 31.7%, followed by Activities of households as employers undifferentiated goods & services 9.7%, Real estate activities 8.2%. This pattern is very similar to that of non-citizens, while the corresponding pattern for citizens is different, with six out of every ten of employed citizens working in public administration and defense.

### 5.4.1. Estimated Employed Population ( 15 years and over) by Economic Activity and Gender, Mid 2011

Economic Activity	Males	Females	Total
<b>Total</b>	<b>1,207,200</b>	<b>196,200</b>	<b>1,403,400</b>
Agriculture, forestry & fishing	81,200	100	81,400
Mining and quarrying	53,800	2,500	56,200
Manufacturing	65,700	1,500	67,200
Electricity, gas, steam & air conditioning supply	5,900	500	6,400
Water supply; sewerage, waste management & remediation activities	3,400	100	3,500
Construction	438,200	6,600	444,700
Wholesale & retail trade repair of motor vehicles and motorcycles	76,700	9,100	85,900
Transportation & storage	42,700	3,700	46,400
Accommodation & food service activities	60,700	7,500	68,200
Information & communication	10,500	1,800	12,300
Financial & insurance activities	14,000	5,500	19,500
Real estate activities	113,500	1,100	114,600
Professional, scientific & technical activities	19,100	3,200	22,300
Administrative & support service activities	47,100	7,100	54,100
Public administration & defence; compulsory social security	86,100	18,100	104,200
Education	15,900	21,200	37,000
Human health & social work activities	12,100	14,100	26,200
Arts, entertainment & recreation	4,200	700	4,900
Other service activities	7,800	2,900	10,700
Activities of households as employers undifferentiated goods & services	47,800	88,500	136,300
Activities of extraterritorial organizations & bodies	900	300	1,200

Source: Statistics Centre - Abu Dhabi

#### 5.4.2. Percentage Distribution of Employed Population (15 years and over) by Economic Activity and Gender, Mid 2011

(%)

Economic Activity	Males	Females	Total
<b>Total</b>	<b>100.0</b>	<b>100.0</b>	<b>100.0</b>
Agriculture, forestry & fishing	6.7	0.1	5.8
Mining and quarrying	4.5	1.3	4.0
Manufacturing	5.4	0.8	4.8
Electricity, gas, steam & air conditioning supply	0.5	0.3	0.5
Water supply; sewerage, waste management & remediation activities	0.3	0.1	0.2
Construction	36.3	3.4	31.7
Wholesale & retail trade repair of motor vehicles and motorcycles	6.4	4.7	6.1
Transportation & storage	3.5	1.9	3.3
Accommodation & food service activities	5.0	3.8	4.9
Information & communication	0.9	0.9	0.9
Financial & insurance activities	1.2	2.8	1.4
Real estate activities	9.4	0.6	8.2
Professional, scientific & technical activities	1.6	1.6	1.6
Administrative & support service activities	3.9	3.6	3.9
Public administration & defence; compulsory social security	7.1	9.2	7.4
Education	1.3	10.8	2.6
Human health & social work activities	1.0	7.2	1.9
Arts, entertainment & recreation	0.3	0.3	0.3
Other service activities	0.6	1.5	0.8
Activities of households as employers undifferentiated goods & services	4.0	45.1	9.7
Activities of extraterritorial organizations & bodies	0.1	0.2	0.1

Source: Statistics Centre - Abu Dhabi

**5.4.3. Estimated Employed Citizens (15 years and over) by Economic Activity and Gender, Mid 2011**

<b>Economic Activity</b>	<b>Males</b>	<b>Females</b>	<b>Total</b>
<b>Total</b>	<b>87,700</b>	<b>28,700</b>	<b>116,400</b>
Agriculture, forestry & fishing	400	-	400
Mining and quarrying	5,400	1,100	6,500
Manufacturing	1,300	300	1,600
Electricity, gas, steam & air conditioning supply	600	300	1,000
Water supply; sewerage, waste management & remediation activities	100	100	200
Construction	3,700	200	3,900
Wholesale & retail trade repair of motor vehicles and motorcycles	2,000	400	2,400
Transportation & storage	1,900	700	2,600
Accommodation & food service activities	600	100	600
Information & communication	1,000	600	1,500
Financial & insurance activities	1,600	1,700	3,300
Real estate activities	1,000	100	1,100
Professional, scientific & technical activities	1,000	400	1,400
Administrative & support service activities	2,200	900	3,000
Public administration & defence; compulsory social security	61,300	13,700	75,000
Education	1,700	5,500	7,200
Human health & social work activities	1,100	2,200	3,300
Arts, entertainment & recreation	300	100	400
Other service activities	200	200	300
Activities of households as employers undifferentiated goods & services	500	100	600
Activities of extraterritorial organizations & bodies	100	0	100

Source: Statistics Centre - Abu Dhabi



**5.4.4. Percentage Distribution of Employed Citizens (15 years and over) by Economic Activity and Gender, Mid 2011**

(%)

<b>Economic Activity</b>	<b>Males</b>	<b>Females</b>	<b>Total</b>
<b>Total</b>	<b>100.0</b>	<b>100.0</b>	<b>100.0</b>
Agriculture, forestry & fishing	0.5	0.1	0.4
Mining and quarrying	6.1	3.8	5.6
Manufacturing	1.5	0.9	1.3
Electricity, gas, steam & air conditioning supply	0.7	1.2	0.8
Water supply; sewerage, waste management & remediation activities	0.2	0.2	0.2
Construction	4.2	0.7	3.4
Wholesale & retail trade repair of motor vehicles and motorcycles	2.3	1.5	2.1
Transportation & storage	2.1	2.6	2.2
Accommodation & food service activities	0.6	0.2	0.5
Information & communication	1.1	1.9	1.3
Financial & insurance activities	1.8	5.9	2.8
Real estate activities	1.1	0.3	0.9
Professional, scientific & technical activities	1.1	1.5	1.2
Administrative & support service activities	2.5	3.0	2.6
Public administration & defence; compulsory social security	69.9	47.7	64.4
Education	1.9	19.2	6.2
Human health & social work activities	1.2	7.8	2.8
Arts, entertainment & recreation	0.3	0.3	0.3
Other service activities	0.2	0.7	0.3
Activities of households as employers undifferentiated goods & services	0.5	0.5	0.5
Activities of extraterritorial organizations & bodies	0.1	0.1	0.1

Source: Statistics Centre - Abu Dhabi

**5.4.5. Estimated Employed Non-Citizens (15 years and over) by Economic Activity and Gender, Mid 2011**

(%)

<b>Economic Activity</b>	<b>Males</b>	<b>Females</b>	<b>Total</b>
<b>Total</b>	<b>1,119,600</b>	<b>167,500</b>	<b>1,287,000</b>
Agriculture, forestry & fishing	80,800	100	80,900
Mining and quarrying	48,400	1,400	49,800
Manufacturing	64,400	1,200	65,700
Electricity, gas, steam & air conditioning supply	5,300	200	5,400
Water supply; sewerage, waste management & remediation activities	3,200	100	3,300
Construction	434,400	6,400	440,800
Wholesale & retail trade repair of motor vehicles and motorcycles	74,700	8,700	83,400
Transportation & storage	40,900	2,900	43,800
Accommodation & food service activities	60,100	7,500	67,600
Information & communication	9,500	1,300	10,800
Financial & insurance activities	12,500	3,800	16,300
Real estate activities	112,600	1,000	113,600
Professional, scientific & technical activities	18,100	2,800	20,900
Administrative & support service activities	44,900	6,200	51,100
Public administration & defence; compulsory social security	24,800	4,400	29,200
Education	14,200	15,700	29,800
Human health & social work activities	11,100	11,900	22,900
Arts, entertainment & recreation	3,900	600	4,500
Other service activities	7,600	2,800	10,400
Activities of households as employers undifferentiated goods & services	47,400	88,300	135,700
Activities of extraterritorial organizations & bodies	800	300	1,100

Source: Statistics Centre - Abu Dhabi

**5.4.6. Percentage Distribution of Employed Non-Citizens ( 15 years and over) by Economic Activity and Gender, Mid 2011**

<b>Economic Activity</b>	<b>Males</b>	<b>Females</b>	<b>Total</b>
<b>Total (%)</b>	<b>100.0</b>	<b>100.0</b>	<b>100.0</b>
Agriculture, forestry & fishing	7.2	0.1	6.3
Mining and quarrying	4.3	0.8	3.9
Manufacturing	5.8	0.7	5.1
Electricity, gas, steam & air conditioning supply	0.5	0.1	0.4
Water supply; sewerage, waste management & remediation activities	0.3	0.0	0.3
Construction	38.8	3.8	34.2
Wholesale & retail trade repair of motor vehicles and motorcycles	6.7	5.2	6.5
Transportation & storage	3.7	1.8	3.4
Accommodation & food service activities	5.4	4.5	5.2
Information & communication	0.8	0.8	0.8
Financial & insurance activities	1.1	2.3	1.3
Real estate activities	10.1	0.6	8.8
Professional, scientific & technical activities	1.6	1.7	1.6
Administrative & support service activities	4.0	3.7	4.0
Public administration & defence; compulsory social security	2.2	2.7	2.3
Education	1.3	9.4	2.3
Human health & social work activities	1.0	7.1	1.8
Arts, entertainment & recreation	0.4	0.3	0.4
Other service activities	0.7	1.6	0.8
Activities of households as employers undifferentiated goods & services	4.2	52.7	10.5
Activities of extraterritorial organizations & bodies	0.1	0.2	0.1

Source: Statistics Centre - Abu Dhabi