



مركز الإحصاء
STATISTICS CENTRE



Agricultural Producers

Price Index

December 2018

Release date: February 2019

Briefing

This publication provides an analysis of the results of the Agriculture Producer Price Index (APPI) for December 2018 with the base year 2016. In addition, the publication provides the results of calculating the contributions ratios of the Agriculture groups in the overall percentage change for the current month compared with the previous month.

Key Points

- Prices of the Agriculture Producer Price Index (APPI) increased by 17.5% during December 2018 compared with December 2017, where the APPI was 103.5 % in December 2017 compared with 121.6% in December 2018.
- Prices of the Agriculture Producer Price Index (APPI) decreased by 9.1% during December 2018 compared with November 2018, where the APPI decreased from 133.9% in November 2018 to 121.6% in December 2018.
- The "Tomatoes" group contributed 96.2% to the overall decrease in the APPI in December 2018 compared with November 2018, where the prices of this group decreased by 13.1% with a weight of 65.2%.
- The "Hot Pepper" group contributed 10.8% to the overall decrease in the APPI in December 2018 compared with November 2018, where the prices of this group decreased by 7.6% with a weight of 10.6%.
- The "Eggplant" group contributed 1.9% to the overall decrease in the APPI in December 2018 compared with November 2018, where the prices of this group decreased by 10.7%.
- Despite the decrease of the Agricultural Producers Price Index in December 2018 compared with November 2018, the prices of "Marrow" group increased by 22.8% and contributed 8.4% in offsetting the overall decrease. The prices of "Lettuce" group increased by 57.7% and contributed 3.6% in offsetting the overall decrease.

Table (1): Percentage change in the APPI groups and the contribution of each product to the total change during the month of December 2018 compared with November 2018. (2016=100)

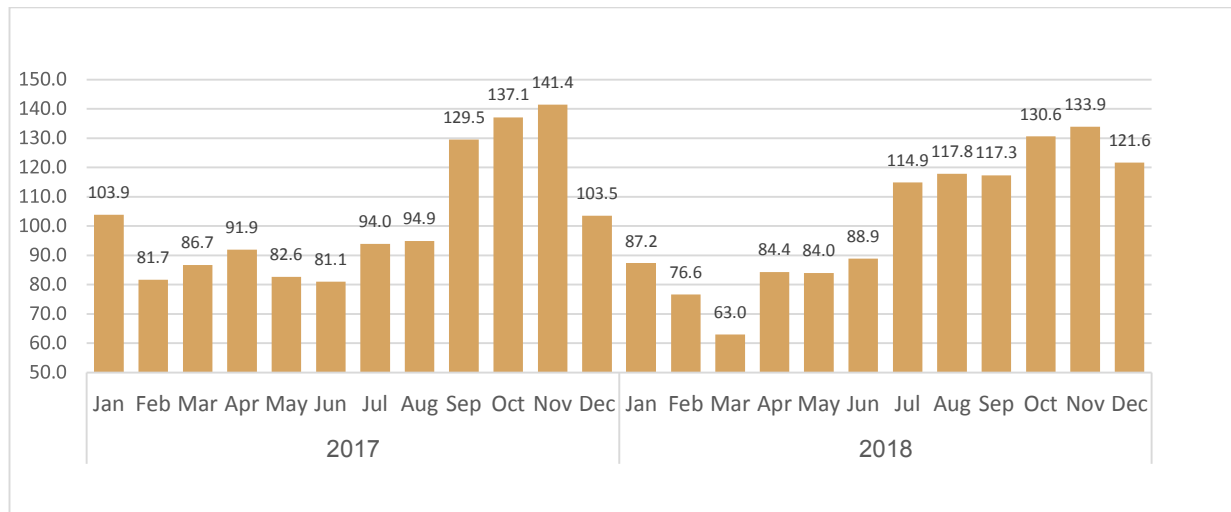
Product	Weight	Percentage Change	Contribution
Potato	2.9	-	-
Cabbage	4.2	-0.6	-0.4
Hot Pepper	10.6	-7.6	-10.8
Paprika	0.2	5.2	0.1
Marrow	5.6	22.8	8.4
Eggplant	1.2	-10.7	-1.9
Cucumber	1.3	-16.1	-1.2
Tomatoes	65.2	-13.1	-96.2
Red watermelon	0.2	2.6	0.0
Melon	0.3	56.0	1.1
Lettuce	0.9	57.7	3.6
Onions	1.3	-	-
Parsley	0.0	-20.3	0.0
Green beans	0.8	-40.7	-3.8
Beetroot	0.0	-25.3	0.0
Carrots	0.2	-	-
Flower / Cauliflower	1.2	43.0	5.5
Pumpkin	1.0	-15.9	-0.9
Coriander	0.0	-7.2	0.0
Okra	0.0	-8.5	0.0
Radishes	0.3	-	-
Corn	2.5	-19.4	-3.6
Broccoli	0.1	-	-
Green pumpkin	0.0	-	-
Dates	0.0	-	-
Lemon	0.0	-	-
Total	100.0	-9.1	-100

Source: Statistics Centre - Abu Dhabi

(-): no price change during the month

* Totals may not add to 100 due to rounding

Figure 1: Agriculture Producer Price Index for the months of 2017-2018. (2016=100)



Source: Statistics Centre - Abu Dhabi

Notes

Technical notes

For better understanding of the statistical indicators mentioned in this summary, please refer to the accompanied technical notes on the SCAD website.

Data sources

Data are obtained through the Farmers Service Center in Abu Dhabi. The data are processed and passed to the Prices and Income Section at Statistic Centre – Abu Dhabi for further editing and compilation.

More information and detailed release

For more information about the Agriculture Producer Price Index (**APPI**) and other official statistics, please visit the statistics link on the SCAD website at <http://www.scad.gov.abudhabi>

Revision Policy

The Agriculture Producer Price Index (APPI) is prepared on a monthly basis, 45 days after the end of the reference month, and the results of the (APPI) calculations are final. Therefore, the published (APPI) indices are not subject to future revisions as a result of new data becoming available. If a mistake is detected, there are procedures that have been put in place with the Project Management Office to remove / modify the publication error.

Disclaimer / Terms of Use

SCAD produces publications for the benefit of government, communities, individuals, and businesses. SCAD shall not be liable for any loss or damage suffered by the user following the misuse of the statistics supplied in good faith by SCAD. Users of official statistics are responsible for determining when and how to use the statistics for specific purposes. The user exempts SCAD from any legal obligation related to errors that may occur outside its control or without its knowledge. The user also waives the right to obtain compensation for losses or damages that may be caused as a result of that error.

SCAD's official statistics are protected under copyright laws, except where otherwise indicated. The contents of this publication may be reproduced, in whole or in part, and by any means, without further permission from SCAD, provided that SCAD is fully acknowledged as follows:

Source: Statistics Centre – Abu Dhabi, year of publication, name of product, catalogue number, reference period and page(s).

Table (1): Percentage change in the APPI groups and the contribution of each product to the total change during the month of December 2018 compared with November 2018. (2016=100)

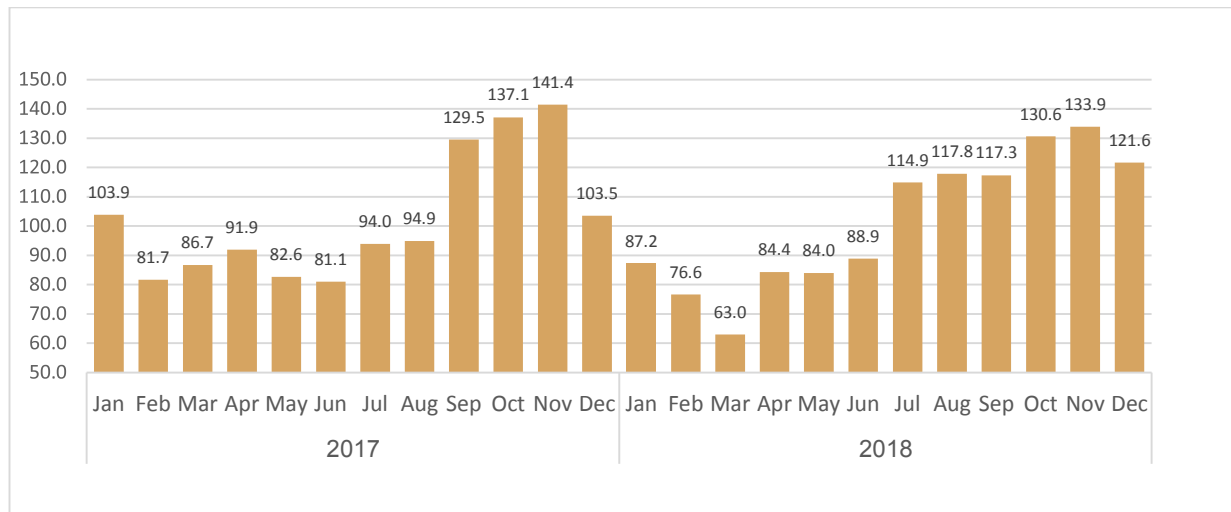
Product	Weight	Percentage %Change	Contribution
Potato	2.9	-	-
Cabbage	4.2	-0.6	-0.4
Hot Pepper	10.6	-7.6	-10.8
Paprika	0.2	5.2	0.1
Marrow	5.6	22.8	8.4
Eggplant	1.2	-10.7	-1.9
Cucumber	1.3	-16.1	-1.2
Tomatoes	65.2	-13.1	-96.2
Red watermelon	0.2	2.6	0.0
Melon	0.3	56.0	1.1
Lettuce	0.9	57.7	3.6
Onions	1.3	-	-
Parsley	0.0	-20.3	0.0
Green beans	0.8	-40.7	-3.8
Beetroot	0.0	-25.3	0.0
Carrots	0.2	-	-
Flower / Cauliflower	1.2	43.0	5.5
Pumpkin	1.0	-15.9	-0.9
Coriander	0.0	-7.2	0.0
Okra	0.0	-8.5	0.0
Radishes	0.3	-	-
Corn	2.5	-19.4	-3.6
Broccoli	0.1	-	-
Green pumpkin	0.0	-	-
Dates	0.0	-	-
Lemon	0.0	-	-
Total	100.0	-9.1	-100

Source: Statistics Centre - Abu Dhabi

(-): no price change during the month

* Totals may not add to 100 due to rounding

Figure 1: Agriculture Producer Price Index for the months of 2017-2018. (2016=100)



Source: Statistics Centre - Abu Dhabi

Notes

Technical notes

For better understanding of the statistical indicators mentioned in this summary, please refer to the accompanied technical notes on the SCAD website.

Data sources

Data are obtained through the Farmers Service Center in Abu Dhabi. The data are processed and passed to the Prices and Income Section at Statistic Centre – Abu Dhabi for further editing and compilation.

More information and detailed release

For more information about the Agriculture Producer Price Index (**APPI**) and other official statistics, please visit the statistics link on the SCAD website at <http://www.scad.gov.abudhabi>

Revision Policy

The Agriculture Producer Price Index (APPI) is prepared on a monthly basis, 45 days after the end of the reference month, and the results of the (APPI) calculations are final. Therefore, the published (APPI) indices are not subject to future revisions as a result of new data becoming available. If a mistake is detected, there are procedures that have been put in place with the Project Management Office to remove / modify the publication error.

Disclaimer / Terms of Use

SCAD produces publications for the benefit of government, communities, individuals, and businesses. SCAD shall not be liable for any loss or damage suffered by the user following the misuse of the statistics supplied in good faith by SCAD. Users of official statistics are responsible for determining when and how to use the statistics for specific purposes. The user exempts SCAD from any legal obligation related to errors that may occur outside its control or without its knowledge. The user also waives the right to obtain compensation for losses or damages that may be caused as a result of that error.

SCAD's official statistics are protected under copyright laws, except where otherwise indicated. The contents of this publication may be reproduced, in whole or in part, and by any means, without further permission from SCAD, provided that SCAD is fully acknowledged as follows:

Source: Statistics Centre – Abu Dhabi, year of publication, name of product, catalogue number, reference period and page(s).